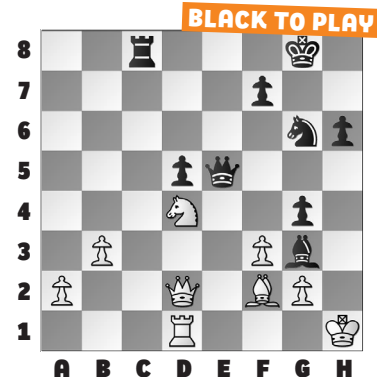


medals across the six sections in Batumi, Georgia. Congrats to our local talent!

In our **example**, Black followed the familiar theme of “pin it to win it,” beginning with **40. ... Qh5+ 41. Kg1 Qh2+ 42. Kf1 Qh1+ 43. Bg1** Hopefully you saw this resource. Now what? **43. ... Bh2** Pin and win! **44. Qe3** Or **44. Qf2 g3 45. Qe3 Nf4** is the same idea. Black added pressure to the g2-square with **44. ... Nf4** when White played **45. Nf5**

**Qxg2+ 46. Ke1 Bxg1 47. Qd2 Re8+** and **resigned** in Yu – Shagin.



### FIDE WORLD CUP JR. PLAYOFF

This week's puzzles continue our three-week series on the **FIDE World Cup** for juniors age 12 and under. Three Americans took home silver

**# 1.** BLACK TO PLAY

A B C D E F G H

**# 2.** BLACK TO PLAY

A B C D E F G H

**# 3.** WHITE TO PLAY

A B C D E F G H

**# 4.** BLACK TO PLAY

A B C D E F G H

**# 5.** WHITE TO PLAY

A B C D E F G H

**# 6.** BLACK TO PLAY

A B C D E F G H

### SOLUTIONS

**1) Mate in two! 34. ... Nd7+ 35. Kc7 R5a7** mate. (Ling – Bolashkov, Batumi, 2024) **2) 29. ... Re8!** Black should have played to “pin, then win” the e2-bishop. Instead **29. ... Qb6** let White hold on to a draw, and then win the match in the next game! **30. Rf2 Bd3** More pin, more win! (Bolashkov – Ling, Batumi, 2024, analysis) **3) 17. f5** The bishop is trapped! **17. ... hxg4 18. fxe6 fxe6 19. Rxg4** and White is up a piece,

with crushing pressure on the unopposed light squares, to boot! (Guo – Ibrahimli, Batumi, 2024) **4) ... Qxf8! 30. Qf4** Or **30. Rxf8 Rxg5** is the point. **30. ... Qg7** Black has won a piece. (Azimov – Guntaka, Batumi, 2024) **5) 38. Ra7!** Black can easily break the pin, but knights are tricky animals. **38. ... Kd6 39. Rxc7 Rxb5** Or **39. ... Kxc7 40. Na6+** was the point. **40. Na6 Ra5 41. Ra7** and White went on to win, as the king

cannot approach the pinned knight without being checked or allowing **Ra7-a8** and **Na6-c7**, untangling just in time to remain ahead the extra piece. (Yusupov – Yang, Batumi, 2024) **6) Black is winning, but did you calculate this out to mate? 41. ... g5+** Black still won after the less forcing **41. ... Nxf6? 42. g5 hxg5+ 43. Kxg5 Ne4+ 44. Kf4 Rf2+** with enough extra pawns. **42. Kh5 Kh7!** The key move! **43. Nxf7 Nxf6** mate. (Shagin – Yu, Batumi, 2024, analysis)