

FIDE WORLD CUP JUNIORS, PT. 2

WEDNESDAY WORKOUT ■ JULY 10, 2024

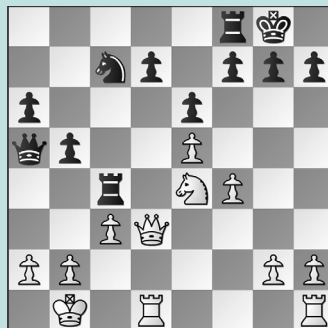
BY JJ LANG

PUZZLE 1.



BLACK TO MOVE

PUZZLE 2.



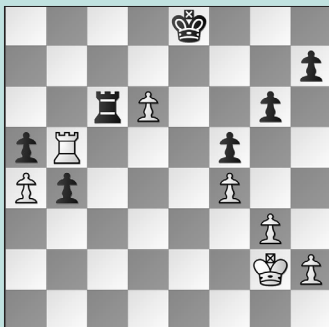
WHITE TO MOVE

PUZZLE 3.



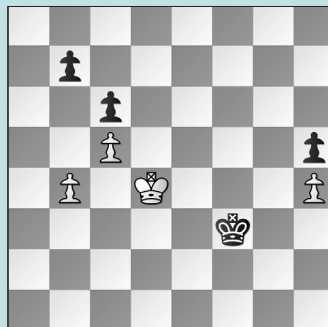
BLACK TO MOVE

PUZZLE 4.



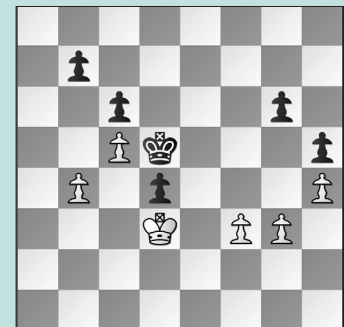
BLACK TO MOVE

PUZZLE 5.



WHITE TO MOVE

PUZZLE 6.



WHITE TO MOVE

SOLUTIONS

PUZZLE 1. 23. ... Rh4! The only defense against White's threat, but a convincing one! 24. Qg3 Not 24. Qxh4 Rxf1+ picking up White's queen. 24. ... Bxe3+ 25. Qxe3 Rhf4 when Black is for choice. (Jakhaia – Shangin, Batumi, 2024) **PUZZLE 2.** 22. Ng5 Straightforward, but effective. Instead, White overthought it with 22. b3 Rxe4! 23. Qxe4 Nd5 when he had to return the Exchange and settle for a draw. 22. ... g6 23. Qh3 h5 24. g4 with a much better position. (Kaushiuk – Shangin, Batumi, 2024, analysis) **PUZZLE 3.** 16. ... Ndx5! Black was too slow, and after 16. ... Qb4 17. Qd2 Ndx5 18. dx5 Qc5+ 19. Kh1 Nf2+ 20. Rxf2 Qxf2 21. Ne4, White's pieces more than com-

pensated for Black's material plus. (Gao – Shomanova, Batumi, 2024, analysis) 17. dx5 Qxe5 when the threats of capturing on h2 and forking on e3 cannot both be met. **PUZZLE 4.** Black should be winning. 51. ... Kd7 Black was too passive with 51. ... Ra6?? when 52. Kf3 Kd7 53. Ke3 Kxd6 54. Kd4 held. 52. Rxa5 Or 52. Kf3 Kxd6 with the point that 53. Rxa5 Rb6 still wins. 52. ... Rb6 53. Re5 b3 54. a5 b2! Winning. (Ling – Shen, Batumi, 2024, analysis) **PUZZLE 5.** 57. Ke5! Instead, White lost after 57. Kd3?? Kg4 58. Ke4 Kxh4 59. Kf4 Kh3 60. Kf3 h4 61. Kf2 Kg4, using the h-pawn as a decoy to win the queenside pawns.; 57. b5 also apparently draws: 57. ... cxb5 58. Kc3 Kg4 59. Kb4 Kxh4 60. Kxb5 Kg4 61. Kb6 h4 62. Kxb7 h3 63. c6 h2 64.

c7 h1=Q+, as White's pawn is a c-pawn, and Black's king is too far away! 57. ... Kg4 58. Kd6 Active counterplay is sometimes the only defense! 58. ... Kxh4 59. Kc7 Kg5 60. Kxb7 h4 61. b5! cxb5 62. c6 h3 63. c7 h2 64. c8=Q h1=Q+ with a draw. (Liu – Bayramova, Batumi, 2024, analysis) **PUZZLE 6.** 53. f4 White lost her edge after 53. g4?? Ke5! 54. gxh5 gxh5 when she is out of moves. She played 55. Kc4 Kf4 56. Kxd4 Kxf3, reaching the previous exercise. 53. ... Ke6 54. Kxd4 Kf5 55. Ke3 Kf6 Or 55. ... Kg4 56. Kf2 Kf5 57. Kf3 Kf6 58. g4! Is a clean win. 56. Kf3 Kf5 57. g4+ Not forced, but the clearest. 57. ... hxg4+ 58. Kg3 Ke6 59. Kxg4 Kf6 60. f5 gxf5+ 61. Kf4 Kg6 62. h5+ and Black's king is too far. (Liu – Bayramova, Batumi, 2024, analysis)