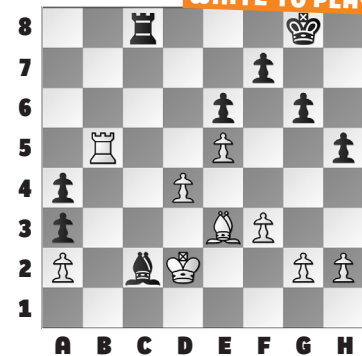


Americans earned second-place finishes across the six sections!

In our **example**, White combines the theme of “loose pieces” with the theme of simplification to force a winning endgame. The threat on the c2-bishop means after **33. Rc5!** **Rxc5** is forced, when **34. dxc5 Bb3** can simply be captured, as **35. axb3 axb3 36. c6 a2** Or **36. ... b2 37. Kc2** freezes the pawns, too. **37. Bd4** and the c-pawn is just quick enough to promote. The game Chen – Yan,

ended with **37. ... Kf8 38. c7 Ke7 39. c8=Q h4 40. Bc5** mate.

WHITE TO PLAY



### SUBJECT HEADLINE ECT

This week's exercises turn to the Under-8 and Under-10 open and girls sections of the **2024 FIDE World Cup** for ages 12 and under. Three

**# 1.** WHITE TO PLAY

**# 2.** WHITE TO PLAY

**# 3.** WHITE TO PLAY

**# 4.** WHITE TO PLAY

**# 5.** BLACK TO PLAY

**# 6.** WHITE TO PLAY

### SOLUTIONS

**1) 29. Bh6+ Kh8 30. Bxf8** White wins a clear piece. (Xin – Yan, Batumi, 2024) **2) 34. Rf4+** There has to be a mate here, right? **34. ... Kh3** Or **34. ... Kh5 35. Rh4+ Kg5 36. Nf3+ Kf5 37. Rf4** mate. **35. Rh4** mate. (Milner – Babazade, Batumi, 2024) **3)** Loose pieces drop off! **30. Re1+ Kd6 31. Rxd5+ Kxd5 32. Rxe7** winning. (Khuduzade – Li, Batumi, 2024) **4)** White forces the pawn through. **47. Rb8+** The important thing was

to avoid **47. f7?? Kg7** when Black wins. **47. ... Kh7 48. f7 Rh1+ 49. Kc2** and the checks will run out. (Li – Kapelinsky, Batumi, 2024) **5)** How should Black respond? **42. ... g6!** It is essential in king-and-pawn endgames to reserve “tempo moves.” In the game, Black lost after **42. ... g5?? 43. Kc5 f5** (while **43. ... Kc8** draws if the c-pawn were the only pawn, here **44. Kb6** wins) **44. gxf5 h5 45. f6** when White promotes first. **43. Ke6** White no longer wins

with **43. Kc5** because **43. ... f5** (or **43. ... h5 44. gxh5 gxh5 45. Kd5 f5** transposes) **44. gxf5 gxf5 45. Kd5 h5** is drawn (prove it yourself for homework!). **43. ... Kxc6 44. Kxf6 g5 45. Kg6 Kb5 46. Kxh6 Kxa5 47. Kxg5 Kb4 48. Kf5 a5 49. g5** with a drawn endgame. (Joseph – Wee, Batumi, 2024, analysis) **6) 10. e5! Bxf3 11. exd6 Bh5** Alternatives: **11. ... Be2 12. Re1; 11. ... Bd5 12. dxe7. 12. Qh4! Be2 13. Re1** winning. (Protopopescu – Joseph, Batumi, 2024)