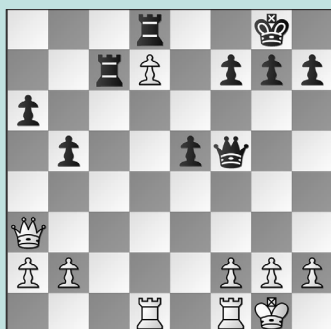


FIDE WORLD CUP U-12, U-10, U-8

WEDNESDAY WORKOUT ■ JULY 3, 2024

BY JJ LANG

PUZZLE 1.



WHITE TO MOVE

PUZZLE 2.



BLACK TO MOVE

PUZZLE 3.



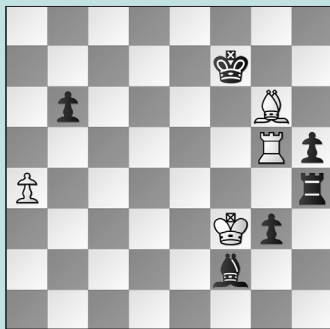
WHITE TO MOVE

PUZZLE 4.



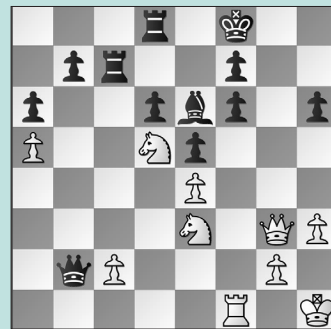
WHITE TO MOVE

PUZZLE 5.



BLACK TO MOVE

PUZZLE 6.



BLACK TO MOVE

SOLUTIONS

PUZZLE 1. 22. **Qe7! h6** The back rank mate is fatal. Alternatives: defending the d8-rook with 22. ... Qf6 23. Qe8+ gets mated; as does 22. ... Rxd7 23. Qxd8+ Rxd8 24. Rxd8 mate; and no different is 22. ... Qxd7 23. Qxd8+ Qxd8 24. Rxd8 mate. 23. **Qxd8+ Kh7** 24. **Qxc7** and **Black resigned** shortly. (Li – McCallum, Batumi, 2024) **PUZZLE 2.** 34. ... **Qf3+!** 35. **Kg1 Rd5** and White had to return the piece with 36. **Ne5** after which she was worse. (Khusnidinova – Milner, Batumi, 2024) **PUZZLE 3.** Black has set up a trap after White captures the bishop. But does it work? 27. **fxg4!** The bishop is vulnerable, since 27. ... **Qh4** is refuted by 28. **Nf5 Qh2+ 29. Kf1** and Black has nothing.

(Guntaka – Chkhartishvili, Batumi, 2024) **PUZZLE 4.** 21. **e5!** Stronger than capturing on a8, restricting Black's bishop on d6. Instead, White lost after 21. **Qxa8!? Bxg3** (not 21. ... Bb7? 22. Qxd8 Qxd8 23. Rcd1 winning) 22. **Rcd1??** (better was 22. **Nxg3 Be6** 23. **exf5! Rxa8** 24. **fxe6** with an edge) 22. ... **Bxh2+ 23. Kh1 Bd6** and Black was better. 21. ... **Be7** 22. **Qxa8 Bb7** 23. **Nf4!** The point! Now, Nf4-e6 is decisive. 23. ... **Kg8** Even 23. ... **Kf7** 24. **e6+ Kf8** 25. **Qxa7 Ra8** 26. **Qxa8+** is more than enough material. 24. **Ne6** winning. (Gao – Vazquez Sanches, Batumi, 2024, analysis) **PUZZLE 5.** 53. ... **Kf6!** 54. **Rxh5 Rg4!** This is what White missed. 55. **Rf5+** If 55. **Kxg4 g2**, the rook is unable to catch the g-pawn. 55. ... **Kxg6 56. Kxg4 g2**

57. **Rg5+ Kf6** 58. **Rf5+ Ke6** 59. **Rxf2 g1=Q+** and **White resigned** in ten more moves. (Wang – Obidov, Batumi, 2024) **PUZZLE 6.** The only defense. 40. ... **Bxd5** Instead, Black lost after 40. ... **Rc3?? 41. Qh4 Rxe3 42. Qxf6 Bxd5 43. Qxd8+** and resignation to follow. 41. **Nxd5 Rxc2!** 42. **Qh4 Rxg2** White is not in time to force mate. 43. **Qxh6+ Ke8** 44. **Nxf6+ Ke7** 45. **Nd5+ Kd7!** 46. **Rxf7+ Kc8** 47. **Nb6+ Kb8** Now, it is actually White who has to find the spectacular 48. **Qxd6+!!** just to force a draw. 48. ... **Rxd6** Or 48. ... **Ka7** 49. **Rxb7+** leads to a perpetual, as well. 49. **Rf8+ Rd8!** 50. **Rxd8+ Kc7** 51. **Rc8+ Kd6** 52. **Nc4+ Kd7** 53. **Nxb2 Rxb2** with an equal, likely drawn, endgame! (Yin – Guo, Batumi, 2024, analysis)