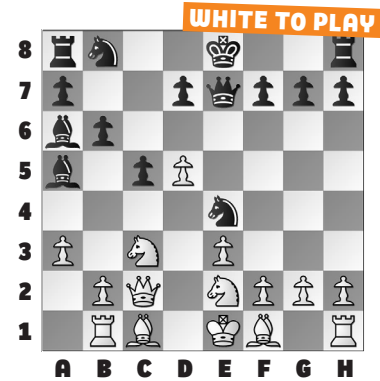


highlights from several of our American players representing their country in Batumi, Georgia.

In our **example**, we follow the age-old principle of **Loose Pieces Drop Off** (LPDO). White can trap Black's bishop with **11. b4!** After **11. ... cxb4 12. axb4 Bxb4**, it looks like White has just blundered a pawn. Instead, White exploits the loose knight on e4 and plays **13. Rxb4! Qxb4 14. Qxe4+ Qxe4 15. Nxe4** to win two pieces for the rook and a

lead in development. (Gao – Amin-Erdene, Batumi, 2024, analysis)



### FIDE WORLD CUP UNDER-12

This week's exercises come from the **2024 FIDE World Cup** Under-12 and Girls Under-12 tournaments, currently underway. Enjoy

**# 1. WHITE TO PLAY**

**# 2. BLACK TO PLAY**

**# 3. WHITE TO PLAY**

**# 4. WHITE TO PLAY**

**# 5. WHITE TO PLAY**

**# 6. BLACK TO PLAY**

### SOLUTIONS

**1)** White forces mate with **45. Qc8+ Kd6 46. Qd7** mate. (Liejanto – Yang, Batumi, 2024) **2)** Black punishes White's greedy b7-pawn grab with **18. ... Qb5+** because loose pieces drop off! **19. Kg2 Qxb7** and Black went on to win. (Chiokadze – Gao, Batumi, 2024) **3)** White wins a key pawn with **40. Nxe6 Kxe6** Black instead played 40. ... Ba7 and lost after 41. Nc7 Rb8 42. Nb5+. **41. Rc6+** with a winning rook ending for

White. (Yang – Tavberidze, Batumi, 2024) **4)** We never want to give up our queen, but White wins with **34. Qxd6!** Remember that queens make terrible blockaders! **34. ... Qxd6 35. e7 Kh7 36. e8=Q** and White went on to win. (Gao – Shomanova, Batumi, 2024) **5)** White's king and knight are forked. How should she defend both? **18. Kh1!** She shouldn't! While 18. Rf2?? saves the knight, 18. ... Qxa1+ scoops the now-loose rook! **18. ... Qxd2??** Black wasn't lost until

now. as her queen no longer covers the f6-square or ties the f1-rook down to the back rank! **19. Qf6+ Kg8 20. Qxg6+ Kf8 21. Qf6+ Kg8 22. Rf3** and White went on to win. (Li – Shomanova, Batumi, 2024) **6)** Where should Black's queen retreat? **33. ... Bxe1!** Nowhere! **34. Qxe1** is a sad necessity, returning the Exchange, since 34. Rxd3 exd3 allows the d-pawn to promote. **34. ... Qxd4** and Black is up too many pawns! (Poonja – Guo, Batumi, 2024)