

# 1000GM LAS VEGAS NORMS, PT. 2

## WEDNESDAY WORKOUT ■ JUNE 26, 2024

BY JJ LANG

PUZZLE 1.



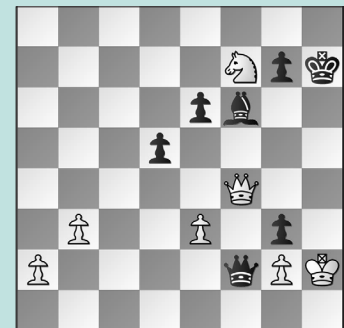
BLACK TO MOVE

PUZZLE 2.



WHITE TO MOVE

PUZZLE 3.



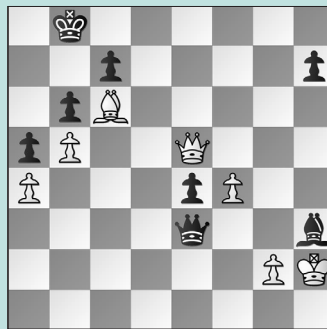
WHITE TO MOVE

PUZZLE 4.



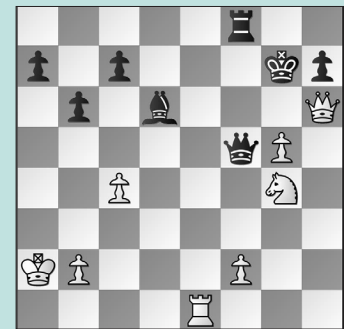
WHITE TO MOVE

PUZZLE 5.



WHITE TO MOVE

PUZZLE 6.



BLACK TO MOVE

### SOLUTIONS

**PUZZLE 1.** 36. ... Rxd4! Instead, Black erred with 36. ... Rd6?? allowing 37. Nf5 Rg6 38. Rh8+ Rg8 39. Rxc8+ Kxc8 40. a5 with a winning endgame! 37. cxd4 g3 and Black's pawn is too fast. (Boros – Tang, Las Vegas, 2024, analysis) **PUZZLE 2.** 24. Qh5! and Black resigned, as Ng5-f7+ is fatal in most lines, while 24. ... Qf4 25. Rf3 is decisive. (Plat – Vatsal, Las Vegas, 2024) **PUZZLE 3.** 34. Kh3! White lost with 34. Qxg3?? missing that 34. ... Qxg3+! 35. Kxg3 Kg8 fails to 36. Nd6 Be5+ nabbing the knight. 34. ... Qxf4 is equal, while 34. ... Qg1 goes nowhere after, e.g., 35. Qxg3 with no attack. 35. exf4 Kg6 36. Nd6 Be7 37. Nc8 Bc5

38. Kxg3 is equal. (Zuluaga Mancilla – Shivakumar, Las Vegas, 2024, analysis) **PUZZLE 4.** 24. Kc2! White huddled with 24. Kb1?? but after 24. ... bxc3 25. Qa2 (or 25. Qc2 Rb8 is decisive) 25. ... c2+! 26. Ka1 Qb4! 27. Bd2 Qc4, Black won. 24. ... bxc3 25. Qxc3 Qa2+ 26. Kd1 White is holding here, even if Black opens the center: 26. ... d5 27. exd5 Rb8 28. Nd2 Bb4 29. Qc2 Qa1+ 30. Qc1 with equality. (Tao – Wongso, Las Vegas, 2024, analysis) **PUZZLE 5.** 34. f5! White threatens Qe5-e8+ with mate to follow. Instead, 34. Bxe4?? lost the advantage after 34. ... Bc8 35. Qd5 Qxf4+ 36. g3 Qh6+ 37. Kg2 Bh3+ 38. Kg1 Kc8! with equality, though White won later. 34. ... Bxf5 35. Qxf5 Qh6+ White's king gets to g4 to pre-

pare Qf5-g5. 36. Kg3 Qe3+ 37. Kh4 Qh6+ 38. Qh5 Qf6+ 39. Qg5 Qf2+ 40. Kh3 escaping checks. (Nagy – Atwell, Las Vegas, 2024, analysis) **PUZZLE 6.** Black instinctively huddled with 42. ... Kg8 Black lost with 42. ... Kh8??, missing 43. Ne5 Bxe5 Though 43. ... Rg8 is more resilient, after 44. g6 White is still pushing. 44. Rxe5?? White fixated on the wrong threat, as 44. g6 overloads Black's queen. 44. ... Qf4?? Black returns the favor, allowing White to deflect, while 44. ... Qf7 holds, since 45. g6 Qxc4+ is a draw. 45. Re4 Qf7 46. g6 Qg7 47. Rh4 with a winning endgame. 43. Nf6+ Rxf6 44. gxf6 Qa5+! 45. Kb3 Qb4+ 46. Kc2 Qxc4+ 47. Kd1 Qg4+ with a perpetual. (Krishnan – Nanugonda, Las Vegas, 2024, analysis)