

### 1000GM VEGAS NORM TACTICS

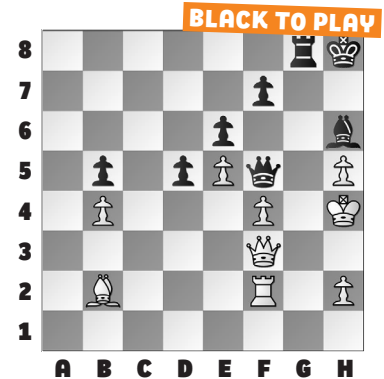
This week, we take a look at tactics from the recent **1000GM Las Vegas Norm Invitationals** held earlier this month. Many hard-fought games

came down to which player could find a key tactic in time trouble.

In our **example**, White is not happy about their king on h4, even if it looks well-protected by their queen. Looks can be deceiving, though. Black broke through with the winning **35. ... Bf8!** when ... Bf8-e7+ is coming, so **White resigned** in Sivakumar – Cordova.

This is a nice reminder to always look for backwards moves. Also, trust your gut! If White's king looks

unsafe, it probably is, even if there's no winning check on this turn.



**# 1. BLACK TO PLAY**

**# 2. BLACK TO PLAY**

**# 3. WHITE TO PLAY**

**# 4. BLACK TO PLAY**

**# 5. WHITE TO PLAY**

**# 6. BLACK TO PLAY**

### SOLUTIONS

**1) 40. ... Qg5** mate. Not the most obvious mate in one! (Andrews – Delgado Ramirez, Las Vegas, 2024)  
**2) 32. ... Rxb2!** In time trouble, Black missed this sacrifice to force through the c-pawn. After **32. ... Rf6 33. g3 g5 34. b3!**, White went on to win. **33. Kxb2 c1=Q+** is the point, but otherwise there is no stopping ... Rb2-b1+. (Rorrer – Wang, Las Vegas, 2024, analysis) **3) 19. Qxb4!** The queen does not have to retreat,

since **19. ... Qxb4 20. Nd5+ Kd7 21. Nxb4 Bxb4** nets a clean Exchange! White went on to win. (Atwell – Ganesan, Las Vegas, 2024) **4) 43. ... Ra1+** Another great tactic missed in a time scramble. In the game, **43. ... Qg1??** allowed **44. a7** and after **44. ... Qb1+ 45. Kb3 Rf1 46. Ka4 Qc1 47. a8=Q**, White was winning. **44. Kxa1 Qxa3+** and White can resign, with the a-pawn being unable to advance any further. (Tang – Zuluaga Mancilla, Las Vegas, 2024, analysis)

**5) 48. Rb8+ Bf8 49. Qa3** An unusual double-attack, but this wins. There are no more checks after Black's queen takes on h2. (Atwell – Singhania, Las Vegas, 2024) **6) 21. ... Ne4+!** Not the easiest forced mate sequence to spot, but believe me, it's there: **22. fxe4** If 22. Ke1, then 22. ... Qg1+ 23. Bf1 Qf2 mate is the point; or 22. Kf1 Qh1 mate. **22. ... Bh4+ 23. Kf3** Or 23. Kf1 is no different: 23. ... Qh1 mate. **23. ... Qg3** mate. (Yanayt – Wan, Las Vegas, 2024)