

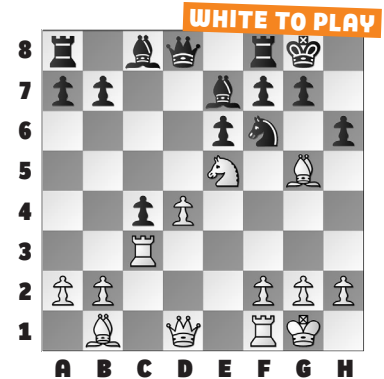
PANOV ATTACKS, PT. 2

This week, our puzzles continue exploring the Panov Attack against the **Caro-Kann**. White plays for an **isolated queen's pawn** (IQP)

structure in order to use familiar attacking themes on the open board. Look for rook lifts, pawn breaks, and knight sacs on f7!

In our **example**, White uses their space advantage on the open board to sacrifice a piece on the kingside with **14. Bxh6 gxh6** Note 14. ... Ne8 does not hold: 15. Qh5 f5 16. Rh3 and White's pieces are too fast. **15. Qd2 Re8** There is no way to defend the h-pawn, since 15. ... Kg7 16. Rg3+ mates. **16. Rg3+** and

Black resigned in Eng – Forchert, Germany, 1994.



1. WHITE TO PLAY

2. WHITE TO PLAY

3. WHITE TO PLAY

4. WHITE TO PLAY

5. WHITE TO PLAY

6. WHITE TO PLAY

SOLUTIONS

1) White forces mate with **17. Rh5** There is no way to defend both the h7- and h8-squares. (Fernandez – Hoang, Chess.com, 2022) **2)** An important pattern to recognize after c4-c5 has been played: White traps the rook and wins an Exchange. **14. Nb6 Rb8 15. Bxb8** winning. (Lauridsen – Vargas, Chess.com, 2022) **3)** A nice double attack: **20. Qc2!** Note 20. Rxc5!? is not equivalent: 20. ... Bxc5 21. Qc2

f6! is a trade of bishop for bishop, although White is still better. **20. ... f6** would be Black's best attempt at an escape, but **21. Qh7+ Kf7 22. Bg6+ Ke7 23. Rxc5** wins the rook. (Matsuura – Silva, Pocos de Caldas, 2017) **4)** White wins with a familiar mating pattern: **16. Qf5** Both f7- and h7-squares fall. **16. ... g6 17. Bxf7+ Kg7 18. Ne6+** with mate next move. (Sergeyev – Konovalova, Chess.com, 2020) **5)** White wins with a familiar break with the

d-pawn. **17. d5!** White has too many threats to count. For instance: **17. ... exd5** But moving the knight, for instance with 17. ... Na5 18. dxe6 also allows White to break through. **18. Rxe8+ Qxe8 19. Nxe4** wins the bishop by opening the e-file against the poor queen. (Jones – Standen, San Francisco, 2009) **6)** White wins with another traditional sacrifice in IQP structures. **23. Nxf7! Rxf7 24. Qxe6 Kf8 25. Qxd5** Black is lost. (Porat – Eperjesi, Budapest, 2005)