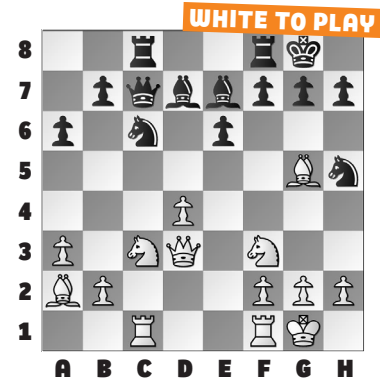


Queen's Pawn (IQP) structure that shows up so often in this repertoire.

Caro-Kann players hope to get closed games with slow play, but here variation, the board opens up quickly, putting Black's pieces in danger. Loose pieces drop off!

In our **example**, White crashes through with **15. d5 exd5** Anything else allows d5xe6 and even more of an attack. **16. Nxd5** and Black cannot defend all their pieces. After **16. ... Qd8 17. Nxe7+ Nxe7 18.**

Rxc8!, Black resigned in Dorskocil – Preindl, Wattens, 1998.



LOOSE PIECES IN THE PANOV

We return to the **Chess Life Kids Opening Project** with an exploration of the Panov against the **Caro-Kann Defense**. White reaches an Isolated

1. WHITE TO PLAY

2. WHITE TO PLAY

3. WHITE TO PLAY

4. WHITE TO PLAY

5. WHITE TO PLAY

6. WHITE TO PLAY

SOLUTIONS

1) 15. Nb5 A classic double attack. **15. ... Qd7 16. Nxd6** Black loses a bishop to a common pattern. (Hessler – Hoettges, Germany1 2002) **2) 17. Nxd7** White pushes Black's queen into a knight fork. **17. ... Qxd7** If 17. ... Nxd7, then 18. Bxe7 was the point. **18. Nb6 Qb7 19. Nxc8** Winning an Exchange. (Wawrzyczek – Kukla, Krynica, 2001) **3) 15. Bxd7** Another deflection, this time into a discovered attack! **15. ...**

Qxd7 16. Ne5 And the h5-knight falls, regardless of where Black's queen moves. (Hirneise – Kittler, Nuremberg, 2006) **4) 15. Bxd5** White clears the d1-a4 diagonal for the queen! **15. ... Nxd5 16. Qa4+** The loose a6-bishop drops off. This is a common theme when Black's king has not castled. (Baloun – Majetic, Churudim, 1993) **5) 17. Qe4** White's mating attack is easily handled, however this move has a secondary purpose. **17. ... g6 18. Bb4** Now that

the bishop is defended on the b4-square, White wins an Exchange! (Pruess – Ezhikov, Moscow, 2008) **6) Black's queen is defended twice, but not for long. 14. Bxc6 Bxc6 15. Nxd5** Now, Black's queen is hanging, but **15. ... Qxd2 16. Ne7+** and White's knight escapes! **16. ... Kh8 17. Nxd2 Rc7 18. Nxc6** and White is up a piece. Remember to look for this idea of Nxd5-e7+ when Black's king is on g8 and rook is on f8. (Dias – Rodrigues, Osasco, 2012)