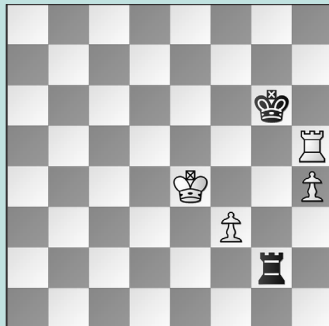


NOT-SO-ELEMENTARY TACTICS, PT. 2

WEDNESDAY WORKOUT ■ MAY 22, 2024

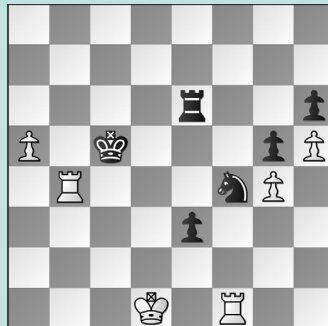
BY JJ LANG

PUZZLE 1.



WHITE TO MOVE

PUZZLE 2.



WHITE TO MOVE

PUZZLE 3.



WHITE TO MOVE

PUZZLE 4.



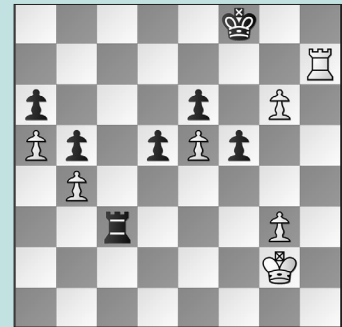
BLACK TO MOVE

PUZZLE 5.



WHITE TO MOVE

PUZZLE 6.



BLACK TO MOVE

SOLUTIONS

PUZZLE 1. 52. **Rg5+** A simplification tactic into a winning pawn endgame. 52. ... **Rxg5** 53. **hxg5 Kxg5** 54. **Ke5 Kg6** 55. **f4 Kf7** If 55. ... **Kg7** 56. **Ke6!** wins. 56. **Kf5 Ke7** 57. **Kg6 Kf8** 58. **Kf6** and White won. (Ramesh – Wang, Columbus, 2024) **PUZZLE 2.** 62. **Rxf4!** Another simplification tactic. Not 62. **Rbxf4??** e2+ 63. **Kd2 gxf4** when 64. **Ra1!!** holds a draw, and anything else loses. 62. ... **gxf4** 63. **Rxf4 Kd5** Or 63. ... **Kb5** 64. **Rf5+ Kc4** 65. **Ke2** also wins. 64. **Ke2 Re5** 65. **Rf5** and White went on to win. (Chaudhuri – Parikh, Columbus, 2024) **PUZZLE 3.** 34. **Be2!** An astute, backwards-moving bishop sets up an unstoppable threat. 34. ... **e5** 35. **Bxb5** and Black resigned 13 moves later.

(Gu – Choudhury, Columbus, 2024) **PUZZLE 4.** 28. ... **Bh4** Black uses White's weakened e1-h4 diagonal to launch a killer attack. 29. **Re2 Bg3!** 30. **h3** If 30. **hxg3 fxg3**, mate is inevitable. 30. ... **Nh4** 31. **Ne7 Nxf3+!** and Black crashes through. The game ended 32. **gxf3 Bf2+** 33. **Kh2 Qg5** when White resigned. (Tanaka – Wang, Columbus, 2024) **PUZZLE 5.** 23. **Nd5!** A thematic sac with a less obvious follow-up idea. Instead, 23. **Ne2** was played, and after 23. ... **Ba6** 24. **Qe1 Kh8**, Black had a slightly better position. 23. ... **Qh4** Note that 23. ... **exd5** loses even faster in all lines after 24. **Qxd5+ Qe6** 25. **Qxa8** wins the queen; or 24. ... **Nf7** 25. **Rxf7** wins. 24. **Nc7** The idea is to play **Nc7xe6!** 24. ... **Rb8** 25. **Bg5** Or 25. **Nxe6** immediately is

also good 25. ... **dxe6** 26. **Bg5** controlling the d8-square. 25. ... **Qxe4** 26. **Nxe6!** is White's idea to crash through. (Xu – Fife, Columbus, 2024, analysis) **PUZZLE 6.** 44. ... **Re3** The only drawing move. In the game, 44. ... **d4?** is losing after 45. **Ra7 d3** 46. **Rxa6 d2** 47. **Rd6 Rc2** 48. **Kf1**. Instead, White played 45. **Rd7?**, and Black blundered back with 45. ... **d3??** (on the other hand, 45. ... **Rb3** 46. **Rxd4 Kg7** held). Then, White returned the favor with 46. **Kh3??** (necessary was 46. **Kf3!** staying near the pawn) and Black lost after 46. ... **d2?** (missing 46. ... **Rc4!** with a draw). 45. **Ra7 Rxe5** 46. **Rxa6 Kg7!** 47. **Rd6 Re4** 48. **a6 Rxb4** 49. **Rxe6 Ra4** is equal, but the mistakes after 44. ... **d4** were the point. (Degeest – Wang, Columbus, 2024, analysis)