

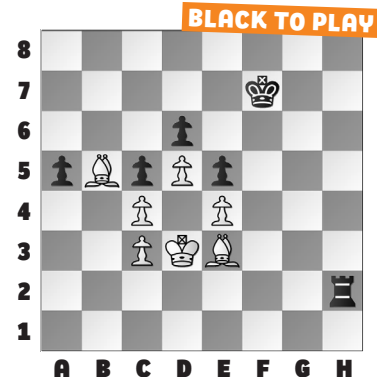
ELEMENTARY TACTICS, PT. 2

This week, we continue our series from the **2024 National Elementary School Championship** in Columbus, Ohio. Today's theme is overloaded

pieces. Look for pieces that might appear defensive but are unable to do everything asked of them.

In today's **example**, how is Black's passed a-pawn supposed to get through White's bishop pair? **54. ... Ra2!** This, or **54. ... Rb2!**, is essential. Anything else allows **Be3-d2** and **Kd3-c2**, when White can stop the pawn. **55. Bc1 a4** White's bishops cannot work together, while Black's rook covers every square. After **56. Bc6 a3 57. Ba4 Ra1 58. Kd2**

a2 59. Bb2 Rb1! 60. Kc2 a1=Q, Black is winning in Liu – Srinivasan.



1. BLACK TO PLAY

2. WHITE TO PLAY

3. WHITE TO PLAY

4. BLACK TO PLAY

5. WHITE TO PLAY

6. BLACK TO PLAY

SOLUTIONS

1) 40. ... Rcd5! A simple pile-on. There is no defense. **41. Kc2 Rxd4** and Black went on to win. (Jackson – Shen, Columbus, 2024) **2) 32. Qxf7+!** A very “puzzle rush” tactic. White forces mate: **32. ... Rxf7 33. Ra8+ Qb8 34. Rxb8** mate. (Jani – Mak, Columbus, 2024) **3)** A bit tricky, as lots of moves look good, but White must be precise. **23. Qd6+!** Not **23. Qe4+?? Kxb5**. But, also bad is **23. Qxc4+?? Kd7!** and White

has no way to push. It is important to keep Black's king closer to White's pieces on the queenside. **23. ... Kxb5 24. Bxc4+** The point. Now **24. ... Kxc4 25. Qxb6** and White wins the queen. **24. ... Ka4 25. Qxb6** was no different. (Zhao – Wang, Columbus, 2024) **4) 19. ... Rxc1!** Of course, not **19. ... axb6 20. Rxc8+ Kd7 21. Rxh8** when White is winning. **20. Qb5+ Rc6!** This must be what White missed. Black is not in time to capture White's queen, but it doesn't

matter, since White is not in time to recapture Black's rook, and **White resigned** on move 37. (Qiao – Kai, Columbus 2024) **5) 24. d6!** There is no answer to White's mate threat. **24. ... c6 25. dxe7** wins the queen and the game. (Deutsch – Donkor, Columbus, 2024) **6)** Black missed a way to destroy White's center with **18. ... Nxd4 19. Bxd4 Rxd4** since **20. Rxd4 Qxc1+** wins even more material. (Liu – Goodrich, Columbus 2024, analysis)