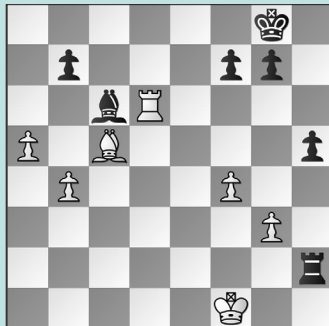


ELEMENTARY TACTICS, PT. 1

WEDNESDAY WORKOUT ■ MAY 15, 2024

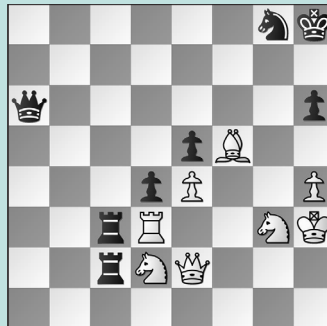
BY JJ LANG

PUZZLE 1.



WHITE TO MOVE

PUZZLE 2.



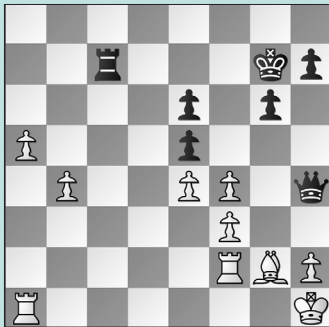
WHITE TO MOVE

PUZZLE 3.



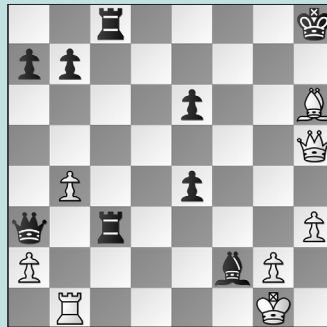
WHITE TO MOVE

PUZZLE 4.



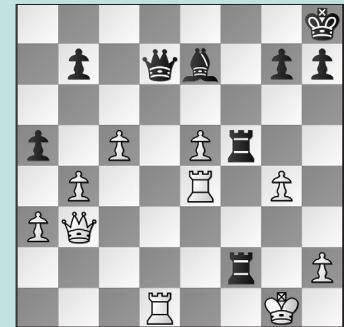
WHITE TO MOVE

PUZZLE 5.



WHITE TO MOVE

PUZZLE 6.



BLACK TO MOVE

SOLUTIONS

PUZZLE 1. 53. a6! Black has no way to stop the pawn without losing the bishop! **53. ... Ra2 54. a7 Kh7 55. Bb6!** and **White won** in 14 more moves. Watch out for 55. Rd8? b5! with drawing chances. (Karthi – Chovanec, Columbus, 2024) **PUZZLE 2. 69. Rxc3** White captures with a discovery, and after **69. ... Qxe2 70. Rxc2!** White is up material and ties everything together. **70. ... Qd3 71. Ra2** and **Black resigned** nine moves later. **PUZZLE 3. 22. Rad1!** Note that 22. Rfd1? Bxd5 23. Rxd4?? (at least 23. cxd5 is equal) 23. ... Qe8! breaks the pin with a mate threat! **22. ... Bxd5 23. Rxd4 Re5 24. cxd5** and White won on move 56. (Shen – Miransh, Columbus, 2024) **PUZZLE 4.**

34. Rff1! The best defense is a good offense. White must guard against ... Rc7-c1+, and now the pawns can roll. **34. ... Qd8 35. b5! Rb7 36. Rfb1 Qa8 37. b6 Qa6 38. Bf1** and **Black resigned.** (Muneepeerakul – Yang, Columbus, 2024) **PUZZLE 5. 29. Kf1!** In the game, White got “too greedy” with **29. Kxf2 Qxa2+ 30. Bd2+**, which looks resourceful, but **30. ... Kg7 31. Qe5+? Kf7 32. Qf4+ Ke8 33. Qh6 e3+** and Black is winning Remarkably, 31. Qg5+ Kf7 32. Rd1 e3+ 33. Kg1 exd2 34. Rxd2 held. **29. ... Bd4** is the “best” defense against mate. **30. Bc1+ Kg7 31. Qh6+** Importantly, not 31. Bxa3?? Rf8+ 32. Ke2 Rf2+ 33. Ke1 Re3+ 34. Kd1 (or 34. Kxf2 Rxh3! also holds) Rd3+ 35. Ke1 (not 35. Kc1?? Be3 mate) 35. ... Re3+ draws. **31. ... Kg8 32. Qxe6+ Kh8**

33. Qh6+ Kg8 34. Qg5+! Covering the e3-square: **34. ... Kh8 35. Bxa3 Rf8+ 36. Ke2 Rf2+ 37. Ke1** and Ke1xf2 is a threat with the queen on g5 rather than h5. (Mahajan – Mulya, Columbus, 2024, analysis) **PUZZLE 6. 31. ... a4!** Get ready! In the game, **31. ... Qc6?** 32. gxf5 won: 32. ... Qxe4 33. Kxf2 Bh4+ 34. Kg1 Qg4+ 35. Kf1 Qxf5+ 36. Ke2 and Black’s checks run out! Instead, after **32. Rd5?? Rf1+ 33. Kg2 R5f2+ 34. Kg3 Rf3+** and **Black resigned** shortly. **32. Qb1!** Or 32. Qd5? Rf1+ wins, e.g.: 33. Kg2 R5f2+ 34. Kg3 Bh4+ 35. Kxh4 Rxd1 wins. **32. ... Rb2! 33. Rxd7!** Or 33. Qc1? allows 33. ... Qc6! 34. Qxb2 Qxe4 35. gxf5 Qg4+ piece-up. **33. ... Rxb1+ 34. Kg2 Rb2+ 35. Kg3 Rb3+ 36. Kg2 Rb2+** is a draw. (Liu – Mahajan, Columbus, 2024, analysis)