

K-12 CHAMPS HIGHLIGHTS, PT. 2

WEDNESDAY WORKOUT ■ MAY 8, 2024

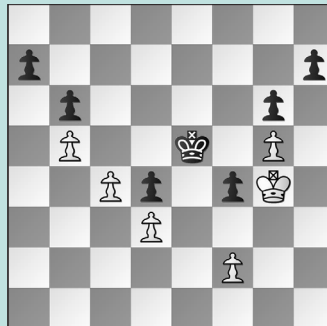
BY JJ LANG

PUZZLE 1.



BLACK TO MOVE

PUZZLE 2.



BLACK TO MOVE

PUZZLE 3.



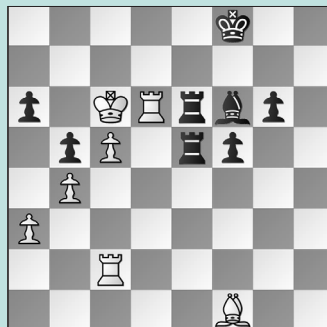
WHITE TO MOVE

PUZZLE 4.



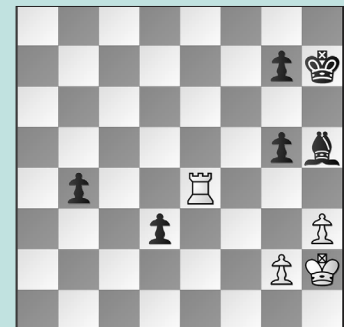
BLACK TO MOVE

PUZZLE 5.



BLACK TO MOVE

PUZZLE 6.



WHITE TO MOVE

SOLUTIONS

PUZZLE 1. 19. ... Nxd4! Black wins a clean pawn. **20. Bxd4** Or 20. Qxd4 Bxg5 21. Bxg5 Qxg5 22. f3 c5 wins the e5-pawn with check. **20. ... Qxg5** Opening an escape hatch for the light-squared bishop. (Kumar – Modzelewski, Baltimore, 2024, analysis) **PUZZLE 2. 43. ... f3!** Instructive! **44. Kg3** Or 44. Kxf3 Kf5 45. Kg3 Kxg5 is also winning. **44. ... Kf5 45. Kxf3 Kxg5 46. Ke4 h5** and Black went on to win. (Wang – Chen, Baltimore, 2024) **PUZZLE 3. 29. Qxe3! Rxc2 30. Qe4 Rxf2** If 30. ... Qxa1+, then 31. Rf1 was another key resource for White. **31. Qxa8+** and **Black resigned** four moves later. (Wu – Chasin, Baltimore, 2024) **PUZZLE 4. 26. ... e4!** A nice obstruction. Instead, after **26. ... Nxd5,**

White would be much better after 27. Ne4, occupying the e4-square. **27. Rg3** The point is 27. Nxe4?? loses to 27. ... Nxe4 28. Bxe4 Qd4+ wins the piece, tactically justifying 26. ... e4. **27. ... Ng6 28. Bxg6** Or 28. Qg5 h4 29. Re3 Ne7 repels White's forces. **28. ... fxf6 29. Re1 Nxd5** and the game is about equal. (Singh – Tugstumur, Baltimore, 2024, analysis) **PUZZLE 5. 51. ... Rxd6+!** The only way to hold. In the game, Black lost after **51. ... Ke7?? 52. a4 bxa4 53. Bxa6 a3 54. Bc4 Rxd6+ 55. cxd6+ Kd8 56. b5** and **Black resigned** five moves later. **52. Kxd6** If 52. cxd6, then Re3 53. d7 Rxa3 should hold, as Black is prepared to part with the bishop after, e.g., 54. Kc7 Kg7 55. d8=Q Bxd8+ 56. Kxd8 g5 when Black is now the one with

(marginal) winning chances! **52. ... Re3 53. c6 Be5+! 54. Kd7 Rxa3 55. Re2** If 55. c7, then Bxc7 is again the point. **55. ... Bf4** Black holds. (Reiss – Raju, Baltimore, 2024, analysis) **PUZZLE 6. 45. Rd4!** The only way to corral the pawns. In the game, White lost with **45. g4??** when Black's cleanest win was 45. ... b3! 46. Re1 Bg6, covering the b1-square. The game continued **45. ... d2? 46. Rd4 Bg6 47. Rxd2 b3** when White had chances after any king move, but not after **48. Rb2?? Bc2 49. Kg3 Kg6 50. h4 Kf6 51. hxg5+ Ke5** and **White resigned**. **45. ... Be2 46. Kg1** Or 46. Kg3 is the same. **46. ... b3 47. Kf2 Bd1 48. Rb4 Bc2 49. Ke3** and White's king covers the other key dark square just in time. (Slate – Clasby, Baltimore, 2024, analysis)