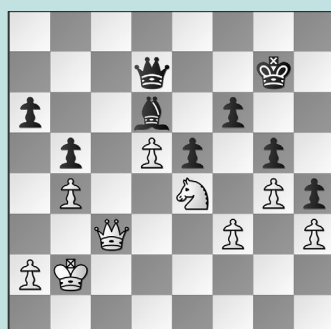


# HIGHLIGHTS FROM K-12 CHAMPS

## WEDNESDAY WORKOUT ■ MAY 1, 2024

BY JJ LANG

### PUZZLE 1.



WHITE TO MOVE

### PUZZLE 2.



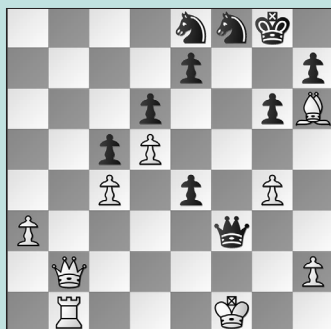
BLACK TO MOVE

### PUZZLE 3.



WHITE TO MOVE

### PUZZLE 4.



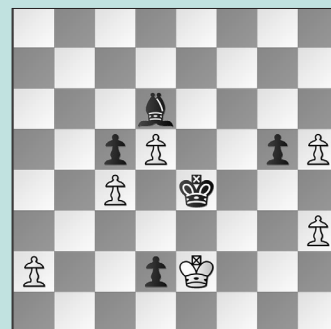
WHITE TO MOVE

### PUZZLE 5.



WHITE TO MOVE

### PUZZLE 6.



BLACK TO MOVE

## SOLUTIONS

**PUZZLE 1. 42. Qc6!** A simplification tactic! The endgame is lost for Black. **42. ... Qxc6 43. dxc6 Bc7 44. Nc5** White wins another pawn. (Mei – Nguyen, Baltimore, 2024) **PUZZLE 2. 31. ... Rxe3** Don't just count material. **32. Qxe3 Bxf4 33. Qxc5 h3!** White is busted. (Luo – Gao, Baltimore, 2024) **PUZZLE 3. 30. Rxe4!** The right capture. Instead, White played **30. Rxd5**, allowing **30. ... Rxe1+ 31. Kg2 cxd5 32. Qg5 Bf6!** Even though White promotes the d-pawn, the game is still equal after **33. Qxf6 Rxf6 34. d8=Q+ Kg7 35. Qxd5 Re2** with a **draw** agreed shortly. **30. ... Qxc5 31. Qe6+ Kh8 32. Rf4!** and **32. ... Rd8** allows **33. Qe8+** picking up the hanging rook, while **32. ... Rg8** loses to

**33. Qxg8+ Kxg8 34. d8=Q+**, as well. (Zong – Zhuang, Baltimore, 2024, analysis) **PUZZLE 4. 36. Kg1!** White erred with **36. Qf2??**, returning material after **36. ... Qh3+ 37. Kg1 Qxh6** and Black went on to win. Similarly, **36. Ke1??** allows **36. ... Qh1+ 37. Kd2 Qxh2+** and the h6-bishop falls. **36. ... Nd7** Or **36. ... Qxg4+ 37. Qg2** allows White to trade favorably. **37. Qg2** or **37. Rf1 Qxg4+ 38. Qg2** is also good. **37. ... Qd3 38. Qf1 Qd4+ 39. Kh1 e3 40. Qf3 Nef6** leaves White playing for a win. (Wang – Gao, Baltimore, 2024, analysis) **PUZZLE 5.** Everyone loves a good game of “this or that.” **34. bxc4!** The only move. White chose the wrong capture and lost after **34. Bxe5?? Nxe5 35. Rg7+ Kf8 36. Rh7** hoping for a

**draw by repetition.** But Black uncorked **36. ... R5b7!** **37. Rhxb7 Rxb7 38. Rxb7 d2 39. Rb8+ Ke7** when the d-pawn wins. **40. Rb7+ Nd7** and **White resigned.** **34. ... d2** If **34. ... Bxc3 35. cxb5 d2 36. Rfd7 Bd4**, White gets the perpetual after **37. e5**. **35. cxb5! d1=Q 36. Bxe5** ironically, Black must now forfeit the draw! (Sloan – Tugstumor, Baltimore, 2024, analysis) **PUZZLE 6. 43. ... g4!** Instead, after **43. ... Kf5?? 44. a4 Bc7 45. Kxd2 Kf6 46. Ke3 Kg7 47. Kf3 Kh6 48. Kg4**, White is on to win. **44. hxg4 Bf4!** and White must chuck a pawn. **45. d6** Or **45. g5 Bxg5 46. d6 Ke5 47. d7 Kd6** draws. **45. ... Bxd6 46. a4! Kd4 47. a5 Kxc4 48. a6 Kb3! 49. Kxd2 c4 50. a7 c3+** The engine swears it's a draw, really! (Gao – Das, Baltimore, 2024, analysis)