

GRENKE: NIEMANN WINS OPEN

WEDNESDAY WORKOUT ■ APRIL 17, 2024

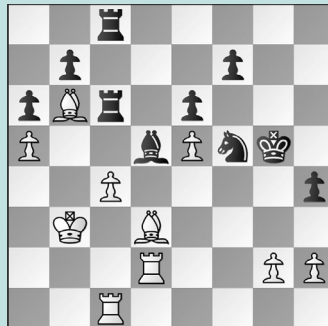
BY JJ LANG

PUZZLE 1.



WHITE TO MOVE

PUZZLE 2.



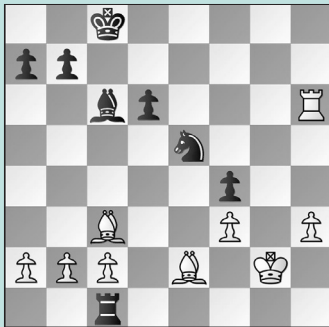
WHITE TO MOVE

PUZZLE 3.



WHITE TO MOVE

PUZZLE 4.



WHITE TO MOVE

PUZZLE 5.



BLACK TO MOVE

PUZZLE 6.



BLACK TO MOVE

SOLUTIONS

PUZZLE 1. 32. **exf7+!** Black loses the queen unless they play 32. ... **Qxf7** But now, the queen is still lost after 33. **Re7** and **Black resigned.** (Niemann – Rosner, Grenke, 2024) **PUZZLE 2.** White's move is not the only win, but it's the most concrete: 43. **cxd5! Rxc1 44. d6!** That's a fast pawn! 44. ... **R1c6 45. Be4** After 45. ... **Rxb6+ 46. axb6 Kf4 47. Bxb7 Rd8 48. d7 Kxe5 49. Bc8, Black resigned.** (Niemann – Costa, Grenke, 2024) **PUZZLE 3.** In this variation, Black's queen is caught offside after 25. **g4 Qh4 26. g5!** There's no way out. For instance, if Black plays 26. ... **c5** then Black can only delay the inevitable: 27. **Kg2 c4 28. bxc4 dxc4 29. Nc5 Nxc5 30. dxc5** with

Rf1-h1 or **Re3-h3** to follow. (Niemann – Rosner, Grenke, 2024, analysis) **PUZZLE 4.** 34. **Rxd6** This is more of a simplification tactic, testing your ability to evaluate more than your calculation. 34. ... **Rxc2 35. Rd2!** The point is that the endgame is a more concrete win without rooks, and this forces the last set of heavy pieces off the board. 35. ... **Rxd2 36. Bxd2 Ng6 37. Kf2 Bd7 38. Bd3 Ne5 39. Bf1 Ng6 40. Bc3** and White will play **Bc3-f6** and begin marching the h-pawn, while also keeping an eye on the weak f-pawn. (Niemann – Chassard, Grenke, 2024) **PUZZLE 5.** In this variation, Black would have been able to capture the bishop and rebuff White's attack. 20. ... **Nxg7 21. Qh6 Bg5!** This was the key *intermezzo*.

Now, 22. **Rxg5 f6** leaves Black safely up a piece. (Raum – Niemann, Grenke, 2024, analysis) **PUZZLE 6.** Black's best way to stay in the game was the counterintuitive 27. ... **Bc8!** Instead, after 27. ... **Nd6? 28. b4 Nc4 29. Qe1 Bxf2+ 30. Qxf2 Qxc3 31. Qc5+! Kg8 32. Ne7+ Kh8 33. Kh2 Qf6 34. Qa7**, White won in 12 moves. Note that 28. ... **Bxf2+** was also inadequate: 29. **Qxf2 Qxc3 30. Qb6! Bc8 31. Qd8+ Ne8 32. Qe7+ Kg8 33. Qxe8+ Kh7 34. Qxc8** leaves White with a winning position, unlike in the line given here. For instance, if White tries to play the same way with 28. **b4?!**, then Black can safely play 28. ... **Bxf2+ 29. Qxf2 Qxc3** and White lacks tempi on Black's bishop and also has no checks. (Niemann – F. Svane, Grenke, 2024, analysis)