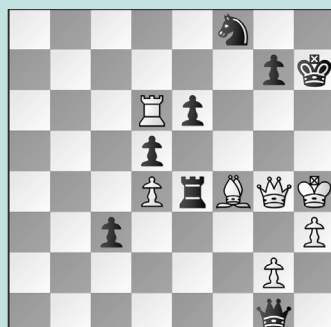


STREAMERS' SUCCESSES IN PRAGUE

WEDNESDAY WORKOUT ■ MARCH 20, 2024

BY JJ LANG

PUZZLE 1.



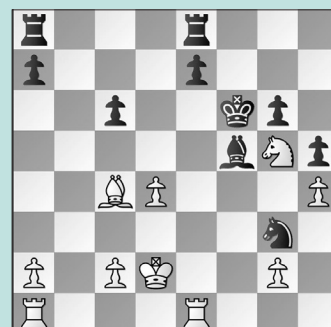
BLACK TO MOVE

PUZZLE 2.



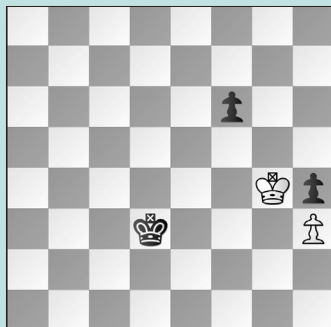
WHITE TO MOVE

PUZZLE 3.



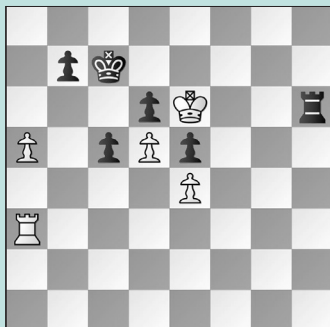
WHITE TO MOVE

PUZZLE 4.



BLACK TO MOVE

PUZZLE 5.



WHITE TO MOVE

PUZZLE 6.



WHITE TO MOVE

SOLUTIONS

PUZZLE 1. 45. ... Rxf4! That'll do it. White resigned, since 46. Qxf4 Ng6+ wins the queen. (Hu – Belenkaya, Prague, 2024) **PUZZLE 2.** 36. Qe1! Those following GM Hammer's commentary on BotezLive might recognize this position as the one where Hammer began screaming in excitement. 36. ... Kf8 While 36. ... Rc8 is the only way to save the rook and mate, it walks into 37. Qe6+ winning the rook anyways! 37. Qxc3 when Black resigned. (Botez, An – Janik, Prague, 2024) **PUZZLE 3.** 23. Re3! The knight is trapped! 23. ... Rad8 24. Kc3 A nice finesse, since there is no hurry to take the trapped piece. 24. ... e5 25. dxe5+ Rxe5 26. Rxe5! Andrea adds insult to injury, winning a

rook instead, thanks to Ng5-f7+ with the fork. (Botez, An – Hujo, Prague, 2024) **PUZZLE 4.** 78. ... Ke3! Alex shows excellent technique winning this pawn endgame after one inaccuracy from her opponent. The win would slip away after 78. ... Ke4?? 79. Kxh4 f5 (or 79. ... Kf4 80. Kh5 Kf5 81. h4 with the same fate) 80. Kg3 f4+ 81. Kf2 when White draws. 79. Kxh4 No better is 79. Kf5 Kf3 80. Kxf6 Kg3 81. Kf5 Kxh3 82. Kf4 Kg2 83. Kg4 h3, when Black wins. 79. ... f5 80. Kg5 f4 winning. (Al Ibrahim – Botez, Al, Prague 2024) **PUZZLE 5.** 61. Kf5! Alex missed the one drawing move, instead playing 61. Ke7?, allows the crafty 61. ... b5! 62. axb6+ Kxb6 63. Ra8 Kb5 when Black's king activates. After 63. Ra8 Kb5 64. Rb8+ Ka4 65. Rb6 c4 66. Rc6 Kb4, White resigned

11 moves later. Instead, this line is different: 61. ... b5 62. axb6+ Kxb6 63. Ra8 Kb5 The key position. Now White has the resourceful 64. Rd8 Or 64. Kg5, switching the move order. 64. ... Kb4 65. Kg5! Rh3 66. Rxd6 holding on. (Botez, Al – Garcia Martinez, Prague, 2024, analysis) **PUZZLE 6.** 21. Nxe5! In the game, Dina chose the more natural 21. Nb4? which allowed 21. ... Nxb4 22. Rg3 Qf6 23. axb4 Ra1 24. Qd2 e4, when Black claimed an advantage. 21. ... dxe5 22. Rg3 Qd6 If 22. ... Qe8 23. Bxh6, White is for choice. 23. Bb2! Rf7 The natural 23. ... Rae8 is met by 24. f4!, winning. 24. Bxe5 Qf8 25. Qh5 White will have three pawns for the piece and a lasting initiative. (Belenkaya – Sofronie, Prague, 2024, analysis)