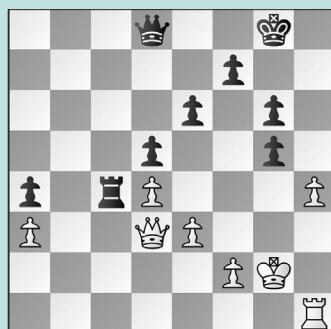


MISHRA IN PRAGUE

WEDNESDAY WORKOUT ■ MARCH 13, 2024

BY JJ LANG

PUZZLE 1.



WHITE TO MOVE

PUZZLE 2.



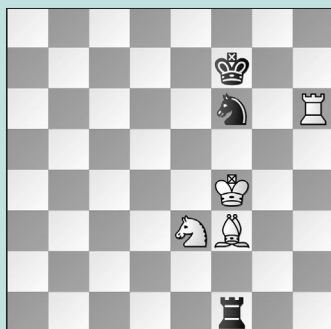
BLACK TO MOVE

PUZZLE 3.



BLACK TO MOVE

PUZZLE 4.



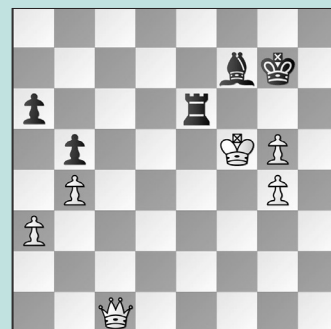
WHITE TO MOVE

PUZZLE 5.



BLACK TO MOVE

PUZZLE 6.



WHITE TO MOVE

SOLUTIONS

PUZZLE 1. White draws with: **34. h5! gxh5** Or **34. ... Qf6 35. hxg6 Qxg6 36. Qxg6+ fxg6** holds after **37. Kf3 Rc3 38. Kg4** with activity. **35. Rxh5 Qf6 36. Qb1** with a **draw** agreed shortly. (Mishra – Rodshtein, Prague, 2024) **PUZZLE 2. 48. ... Nxd5!** Black saw the tactical “refutation,” but followed the Shankland Rule and assessed the endgame as winning after **49. Bxb5 cxb5 50. Rxd5 Rxb2 51. Kf1 Ke6 52. Rc5 b4 53. Rb5 b3 54. Ke1 Kd6!** if White captures the f-pawn, Black’s rook escapes. If not, then Black’s king enters the game. **55. Rxf5 Rc2 56. Kd1 Rc5!** When **White resigned** five moves later. (Finek – Mishra, Prague, 2024) **PUZZLE 3. 15. ... Bd8!** White’s pieces look scary, but lack

coordination. **16. Rxg7** was testing. Instead, White played **16. Bb5+** and **resigned** after **16. ... axb5 17. Nxb5 Ncxe4**; if **16. Bxf6 Bxc7 17. Bxg7 Rg8 18. Bf6**, then White does not have compensation for the Exchange. **16. ... Nfxe4 17. Nxe4 Nxe4 18. Qd4** requires Black to find **18. ... Qb4+**! Importantly, not **18. ... d5??** **19. Bxd5** with **Qd4-e5+** coming. **19. Ke2 d5!** shuts White down. (Hrbek – Mishra, Prague, 2024, analysis) **PUZZLE 4. 104. Kg5!** Not **104. Ke5? Ra5+ 105. Kf4 Kg7 106. Rh2 Kf7** holding. **104. ... Rg1+** Now, **104. ... Ra5+ 105. Nf5!** wins. **105. Kf5 Ng8 106. Rh7+ Kf8** Or **106. ... Rg7 107. Bd5+ Kf8 108. Rh8!** when the knight falls. **107. Ng4 Ra1 108. Ne5 Ra6 109. Bh5** and **Black resigned** 14 moves later. (Korobov – Mishra, Prague, 2024)

PUZZLE 5. 30. ... N6d5! Remarkable! Instead, Black played **30. ... Qd7 31. Nd2** with a **draw** after **31. ... d5 32. Nf3 Re3 33. Bg3 dxe4 34. dxe4 Qc6 35. Nd2 Rd8 36. h3 Ra8 37. Rxa8 Qxa8 38. Kh2 Qc6. 31. Na5** is best. Not **31. exd5?? Qxd5 32. Qg1** (or **32. Qf1 Nh3** wins) **32. ... Nh3** wins the queen! Now, Black has **31. ... Nxe2! 32. Kxe2 Nf4+** followed by **... Qc6-d7-h3!** (Mishra – Santos, Prague, 2024, analysis) **PUZZLE 6. 89. Qc3+! Kh7** Or **89. ... Kg8 90. Qc8+ Kg7 91. Qxe6** wins. **90. Qc8 Rg6 91. Qf8! Be6+** Other moves lose: e.g., **91. ... Bd5 92. Qe7+ Rg7 93. g6+ Kh8 94. Qh4+** wins. **92. Ke5 Bc4 93. Kf4 Ba2 94. Kg3!** White reroutes the king, and **Black resigned** shortly. (Mishra – Vaishali, Prague, 2024)