

# PRAGUE ROCKS: PART 1

WEDNESDAY WORKOUT ■ MARCH 06, 2024

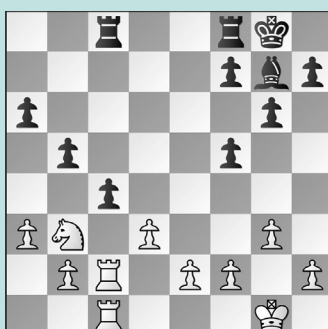
BY JJ LANG

PUZZLE 1.



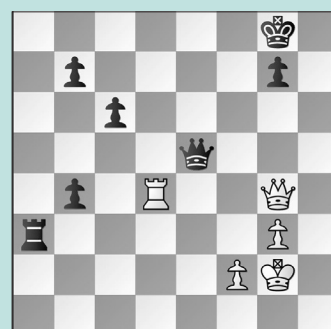
WHITE TO MOVE

PUZZLE 2.



BLACK TO MOVE

PUZZLE 3.



WHITE TO MOVE

PUZZLE 4.



WHITE TO MOVE

PUZZLE 5.



WHITE TO MOVE

PUZZLE 6.



WHITE TO MOVE

## SOLUTIONS

**PUZZLE 1. 38. Rxf6!** With no defense, **Black resigned**, as **38. ... Rxb3 39. Qg8+ Rxc8** loses to **40. Rxc8** mate. (Maghsoodloo – Pragnanandhaa, Prague, 2024) **PUZZLE 2. 22. ... cxb3!** Black was planning on this sac! **23. Rxc8 Bxb2!** This is why! **24. Rxf8+ Kxf7 25. Rb1 Bxa3 26. Rxb3 b4** and **White resigned** in six more moves. (Rapport – Nguyen, Prague, 2024) **PUZZLE 3. 45. Re4** White is threatening mate, but Black has a pin. **45. ... Qd5 46. Kh2!** The quiet killer. **46. ... Ra2** Or **46. ... Qd8 47. Qe6+** with mate to follow. **47. Qc8+ Kh7 48. Rh4+ Kg6 49. Qe8+ Kg5** Or **49. ... Qf7 50. Rg4+** winning the queen. **50. Qe7+ Kf5 51. Rf4+ Kg6 52. Rg4+** and **Black resigned**

a move before **Rg4-g5** mate. (Pragnanandhaa – Vidit, Prague, 2024) **PUZZLE 4. 20. Rhf1!** The winning strategy involves playing against the weak **f7-pawn**, but with which rook? As always, there is a wrong answer: **20. Rdf1? Ne5! 21. c5 dxc5 22. Be4 cxb4 23. Bxc6 Bxc6 24. Qc5+ Qd6!** gives Black a stubborn defense. **20. ... Qe7** The greedy **20. ... Nxe3??** is punished by **21. Rxf7+ Kxf7 22. Qg6+** with mate to follow; if **20. ... Ne5**, now White can play **21. c5! dxc5 22. Be4 cxb4 23. Bxc6**. The rook's purpose on **d1** is clear: Black not have **... Bd7xc6**, and after **23. ... bxc6 24. Qc5+**, the queen cannot come to **d6**. The knight falls unless Black plays **24. ... Qe7**, when he can resign after **25. Qxe7+ Kxe7 26. gxh6+** with a winning endgame. **21. g6! f6 22. h3** and

**Black resigned** five moves later. (Gukesh – Keymer, Prague, 2024) **PUZZLE 5. 29. Rd6!** A useful overload of Black's **d8-rook**. **29. ... Rc8** Even worse was **29. ... Rxd6?? 30. Qe8+ Rf8 31. Qxf8** mate. **30. Nxf7+ Qxf7 31. Rxd4** After **31. ... b3 32. b6 Rc2 33. Qf3 b2 34. b7 Qf8 35. Rdd1 Rc5 36. Qb3**, it was hopeless, so **Black resigned**. (Abdusattorov – Navara, Prague, 2024) **PUZZLE 6. 28. Re4!** Black's queen is short on squares. But **28. g4?? Nxg4 29. hxg4 Qxg4+** is not the queen trap White was hoping for! Black is playing for a win, with **... g7-g5** on the horizon. **28. ... Nxe4 29. Rxe4** The threat of **g3-g4** is now unstoppable! After **29. ... g5 30. g4 Qxh4 31. Nxh4 gxh4 32. Bxh6**, there was no compensation, so **Black resigned**. (Maghsoodloo – Vidit, Prague, 2024)