

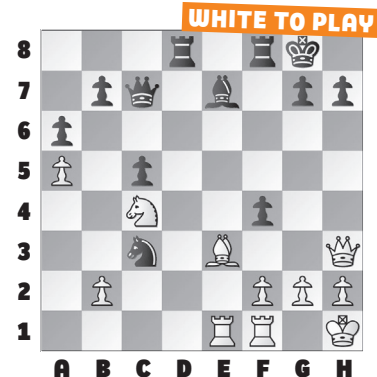
KEEP IT SIMPLE, SILLY!

This week's positions come from the Team Chess battle on *Chess.com*. Most games came down to **simplicity**: the side who traded off

attackers won, and the side who added in extra checks or captures lost. The positions were tricky, but the principles were not!

In our **example**, Black just took on c3 with the knight, adding to the complexity. But in Svidler/Gustafsson – Naroditsky/Hess, White **23. Qe6+ Kh8 24. Bc1!** when the knight and bishop are both under attack, and **24. ... Nd5** loses to the pretty **25. Nb6!!** when Black is unable to save both knight and

bishop, since **25. ... Nxb6 26. axb6** comes with tempo on Black's queen.



1. WHITE TO PLAY

2. BLACK TO PLAY

3. WHITE TO PLAY

4. BLACK TO PLAY

5. BLACK TO PLAY

6. WHITE TO PLAY

SOLUTIONS

1) 39. Qxe4! Taking on h6 only adds more complication: 39. Rxh6+?? Qxh6! 40. Qxe4 Rg8+ and White can resign. **39. ... Rg8+! 40. Qg2!** White's last two moves, then, were aimed at clarifying the board! **40. ... Rxxg2+ 41. Kxxg2 Qg5+ 42. Kh2 Qf4+ 43. Kg2** White holds. (Giri/Rensch – Caruana/Chirila, Chess.com, 2024)
2) 22. ... fxe3! Black took on c3 and could have walked into the trap we saw in our **example**. (Svidler/

Gustafsson – Naroditsky/Hess) **3) Black** is threatening to mate down the h-file. **36. Qe4!** White attempts to simplify. Worse was 36. Qf4?? letting Black's queen in: 36. ... Qh3 37. Qf3 when 37. ... Nc3! would have been nice. **36. ... Qh3 37. Qg2** with equality. (Nakamura/Rozman – Van Foreest/Hansen) **4) 32. ... f5!** White's threat is to either double rooks on the d-file or play Be4-c6 to exploit the pin. Trying to trade rooks and lure White's king onto the e-file.

33. Bb7 Rxe2+ 34. Kxe2 and Black can equalize if they can solve the next puzzle. **5) 34. ... Ke7!** Not 34. ... Re8+?? 35. Kf2 Bc8 (but 35. ... Be6 is more complicated, see next puzzle) 36. Bc6! and Rd1-d8+ is coming. **35. Rxd7+ Rxd7 36. Nxd7 Kxd7 37. Bxa6 Nxa3** with equality. **6) 36. Bxa6 Nxa3 37. Ra1! Intermezzo! 37. ... Nc2 38. Bxb5!** Again! **38. ... Rb8 39. Nxe6+ Ke7 40. Ra2 Rxb5** Or 40. ... Kxe6 41. Bc4+ wins. **41. Nc7!** (Puzzles 4-6 from Caruana/Chirila – So/Lee)