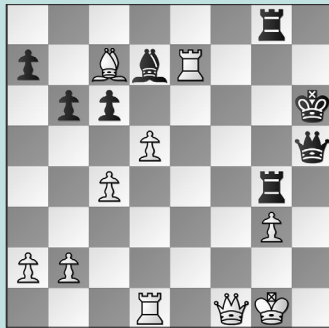


TATA BLITZ PLAYOFF BRILLIANCIENCIES

WEDNESDAY WORKOUT ■ FEBRUARY 21, 2024

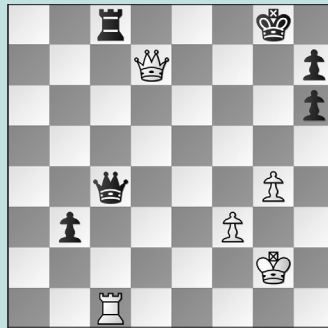
BY JJ LANG

PUZZLE 1.



BLACK TO MOVE

PUZZLE 2.



BLACK TO MOVE

PUZZLE 3.



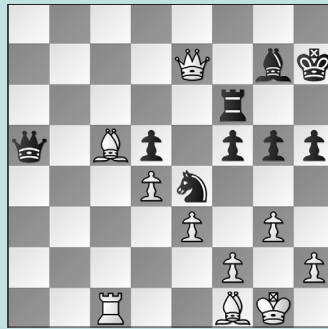
BLACK TO MOVE

PUZZLE 4.



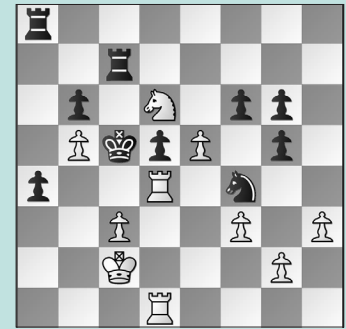
BLACK TO MOVE

PUZZLE 5.



WHITE TO MOVE

PUZZLE 6.



WHITE TO MOVE

SOLUTIONS

PUZZLE 1. Black won with 41. ... Rxc3+! 42. Bxc3 Rxc3+ 43. Kf2 Rf3+ and White resigned in view of 44. Kg1 Rxf1+ when either recapture loses a rook. (Abdusattorov – Wei Yi, Wijk aan Zee, 2024) **PUZZLE 2.** Black should be winning, right? 51. ... Qe2+ Yes, but precision is required! Instead, 51. ... Qxc1?? allowed White to bail out with 52. Qe6+ Kg7 53. Qe7+ Kg6 54. Qe6+ Kg7 and a draw. 52. Kg3 Or 52. Kh3 Qxf3+ 53. Kh2 (or 53. Kh4 Rxc1 and White has no perpetual) 53. ... Qf2+ 54. Kh3 Rxc1 when Black's better coordination prevents a perpetual. 52. ... Rxc1 There is no perpetual. (Wei Yi – Abdusattorov, Wijk aan Zee, 2024, analysis) **PUZZLE 3.** Black missed a win with 22. ... Bxd4

Instead, 22. ... Nc7? 23. Nxc7 Rxc7 24. Bxh6 Rg6 25. Bf4 Ne6 led to a balanced game. Note that 22. ... Qh4 first is also strong. 23. cxd5 If 23. Bxh6 Qh4, White can resign. 23. ... Qh4! 24. Nf6+ Bxf6 Black regains the piece with an unstoppable initiative. (Abdusattorov – Wei Yi, Wijk aan Zee, 2024, analysis) **PUZZLE 4.** 31. ... Qe5! The only move that covers the only escape square for White's rook! If, for instance, Black played 31. ... Qe6, then 32. Rb2 allows White to preserve equality. 32. Rxb4 Hopeless was 32. Nxb4 Rd1+ 33. Bf1 Bxb3 winning. 32. ... axb4 33. e4 Bb1 With no compensation for the Exchange, White resigned. (Giri – Gukesh, Wijk aan Zee, 2024) **PUZZLE 5.** 30. Bb4! Not 30. Rc2?! Nd2! 31. Bb4 Nf3+ 32. Kg2 Qa1 with a

marginal edge. 30. ... Qa2 31. Be1! Black has no attack, even after 31. ... f4 32. exf4 The right pawn: we cannot allow Black's rook to reach g6 with check. 32. ... gxf4 33. Bd3 and Black resigned shortly. (Gukesh – Giri, Wijk aan zee, 2024) **PUZZLE 6.** Here, White missed the spectacular saving move 53. Rxd5+!! In the game, White lost with 53. Rb1?? fxe5 54. Ne4+ dxe4 55. Rxe4 Kd6. More testing was 53. g3?! fxe5 54. R4d2 Kxd6 55. gxf4 Rc5! 56. Rg2 exf4 57. Rxc5 Rxb5, although Black is better. 53. ... Nxd5 54. Ne4+ Kc4 55. Rd4+ Kxb5 56. Rxd5+ Kc6 57. Rd6+ Kb7 Better than 57. ... Kb5, when 58. Rd5+ Ka6?! 59. exf6 b5 60. Kb2 gives White winning chances, but now 58. exf6 provides counterplay. (Gukesh – Giri, Wijk aan Zee, 2024, analysis)