

TATA STEEL HIGHLIGHTS, PT. 1

WEDNESDAY WORKOUT ■ JANUARY 31, 2024

BY JJ LANG

PUZZLE 1.



WHITE TO MOVE

PUZZLE 2.



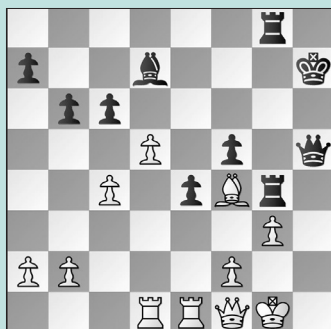
WHITE TO MOVE

PUZZLE 3.



BLACK TO MOVE

PUZZLE 4.



WHITE TO MOVE

PUZZLE 5.



WHITE TO MOVE

PUZZLE 6.



BLACK TO MOVE

SOLUTIONS

PUZZLE 1. White has already broken through, but now she forces mate! **29. Rxf6+ Ke7 30. Rf7+ and Black resigned**, as all moves lead to mate. (Divya – Roebbers, Wijk aan Zee, 2024) **PUZZLE 2.** In Giri's must-win last-round game, his earlier sacs paid off with a satisfying blow: **31. g6! Qe6** Neither capture worked: if **31. ... Qxg6** then **32. Rg1** won; no better is **31. ... Kxg6 32. Rg1+ Kf6 33. Rf1+** winning the queen again. But now **32. Rd7+!** and **Black resigned**. (Giri – Warmerdam, Wijk aan Zee, 2024) **PUZZLE 3.** **22. ... Bf5! 23. N2g3** There's no escape with tactics, as **23. Nf6+ Qxf6 24. e4 Qe7** and the onslaught continues! **23. ... Rxe4!** The point! **24. Nxe4 Qe7 25. Nf6+** Adding a defender with

25. Kf3 only delayed the inevitable since Black has **25. ... Re8** winning. **25. ... Qxf6! 26. e4 Qd4+ 27. Kf3 Qxd5!** Gukesh was ready for this! Simple retreats, such as **27. ... Bd7??** get punished by **28. Bxb4. 28. Bxb4 Bxe4+ 29. Qxe4 Qxe4+ 30. Kxe4 cxb4** and Black converted in 27 moves. (Donchenko – Gukesh, Wijk aan Zee, 2024) **PUZZLE 4.** **38. Qe2!** The only defense, pressuring the loose queen to prevent **... Rg4xf4**. Instead, White played **38. Bc7??** allowing **38. ... f4 39. Rxe4 fxe4** and White's spite checks ran out after **40. Re7+ Kh6 41. fxe4 Rxe4 42. Bxe4 Rxe4 43. Kf2 Rf3+** when **White resigned. 38. ... Qh3 39. Qf1** allows a repetition with **39. ... Qh5 40. Qe2** and Black should take it, as **40. ... Qg6?? 41. Qe3** consolidates. (Abdusat-

torov – Wei, Wijk aan Zee, 2024, analysis) **PUZZLE 5.** **25. Rxb7! Qxb7 26. Bxe6+ Ke8 27. dxe4!** picks up a pawn, to boot. **27. ... Qxe4??** Alternatives were insufficient: if **27. ... Nxe4 28. Bd7+ Kd8 29. Bxb5** crushes; but **27. ... Bd8 28. Nd5 Qc6 29. e5** is also suffocating. **28. Nd5! Bd8 29. h3** is dominating. (Abdusattorov – Ju, Wijk aan Zee, 2024) **PUZZLE 6.** Instead of **24. ... Qc6?** (see **Puzzle 5**), Black holds serve with the resourceful **24. ... Rd8! 25. Bxe6+ Kf8!** White must play **26. Bd5!** White can't play **d3xe4** due to mate threats thanks to the d8-rook, and with Black's king on f8, the knight is harmless on d5. **26. ... Nxd5 27. Nxd5 Bxd5!** The key! **28. Qxd5 Rxd5 29. Rxc7 exd3** is equal. (Abdusattorov – Ju, Wijk aan Zee, 2024, analysis)