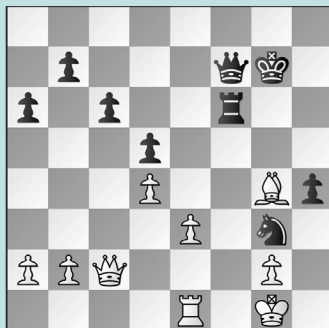


WORLD RAPID AND BLITZ, PT. 2

WEDNESDAY WORKOUT ■ JANUARY 10, 2024

BY JJ LANG

PUZZLE 1.



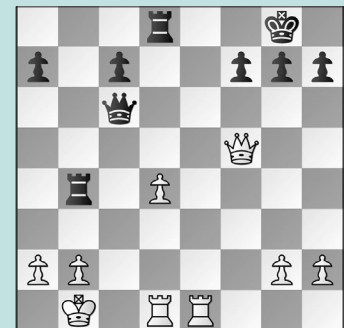
BLACK TO MOVE

PUZZLE 2.



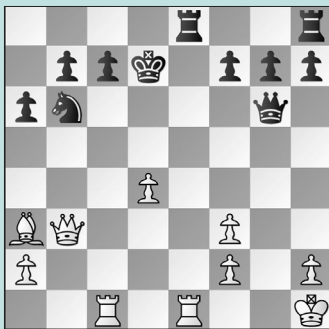
WHITE TO MOVE

PUZZLE 3.



BLACK TO MOVE

PUZZLE 4.



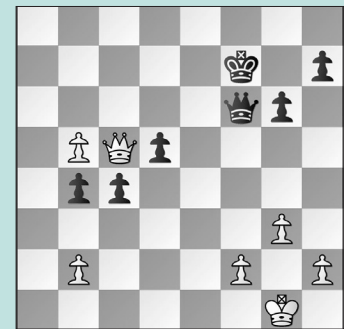
WHITE TO MOVE

PUZZLE 5.



WHITE TO MOVE

PUZZLE 6.



BLACK TO MOVE

SOLUTIONS

PUZZLE 1. 37. ... Rf1+ 38. Rxf1 Qxf1+ 39. Kh2 Qh1 mate. (Muzychuk – Yu, Samarkand, 2023) **PUZZLE 2.** 27. Rxa6 It's not just a pawn, as attempts to solve the back rank problem lose more material. 27. ... Rae8 The other way to defend mate, with 27. ... g6 loses to 28. Rxa8+ Bxa8 29. Rf8+ winning. 28. Bf5 and there goes the Exchange (or a bishop!). (Caruana – Nigmatov, Samarkand, 2023) **PUZZLE 3.** 24. ... Rxb2+! 25. Ka1 Not 25. Kxb2 Rb8+ 26. Ka3 (or 26. Ka1 Qc3 mate) 26. ... Qa6+ 27. Qa5 Qxa5 mate. 25. ... Qc3 White resigned, as there is no stopping mate. (Van Foreest – Holt, Samarkand, 2023) **PUZZLE 4.** 20. Rg1! Qf6 Or 20. ... Qf5 21. Rc5 Qf4 22. Rgc1 c6

23. d5 with a decisive edge. 21. d5! Re2 22. d6! c6 23. Qxb6 Qxf3+ 24. Rg2 Qxa3 25. Qc7+ Ke6 26. Qe7+ Kf5 27. Rg5+ Not 27. Qxe2?? when 27. ... Qxc1+ was Black's last trick. 27. ... Kf4 28. Rc4+ Kf3 29. Qxf7 mate. (Pourkashiyan – Harika, Samarkand, 2023) **PUZZLE 5.** 25. Rxe3 Not 25. Bxg6?? Rxe1 26. Rxe1 Qf2 27. Qe2 Qxe2 28. Rxe2 fxe6 winning. 25. ... Qxe3 26. Bxg6! Nf6 27. Qh4! Instead, the game continued 27. Qf5? Qe2 28. Rb1 Qe6 when Black has time to consolidate with ...Ra8-e8 before White can break through on f7, although Yu went on to win. 27. ... Qe2 28. Rg1 when 28. ... Qe6 is no longer offering a queen trade, allowing White to keep up the attack. 29. Nxf7 winning. (Yu – Ushenina, Samarkand, 2023,

analysis) **PUZZLE 6.** There are two answers here, but the right solution requires finding both moves, in some order. 27. ... c3! Or 27. ... Qf5 also holds: 28. b6 with the same idea of 28. ... c3 29. bxc3 bxc3 30. Qc7+ (or 30. b7 Qb1+ holds) 30. ... Ke6! 31. b7 Qb1+ 32. Kg2 Qe4+ with a draw; 27. ... Qxb2?? was played, losing after 28. Qxd5+ Kg7 29. b6 c3 30. Qe5+. White's b-pawn queens first and coordinates for mate before Black's counterpart can get moving. 30. ... Kf7 31. b7 Qb1+ 32. Kg2! winning. 28. bxc3 bxc3 29. Qc7+ Ke6 30. b6 Qf5! The point: the check on b1 scoops up the b-pawn if White takes the c-pawn, and forces perpetual if White pushes b6-b7. (Aronian – Shimanov, Samarkand, 2023, analysis)