

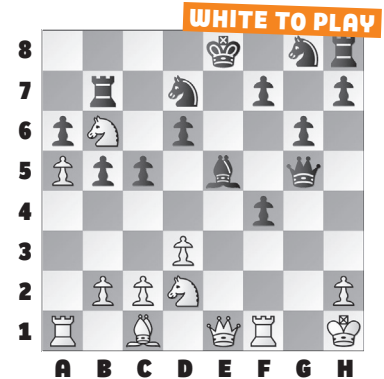
### RAPID & BLITZ FROM GABALA

As satisfying as it can be to watch top players play perfectly in classical time controls, there sure are more tactics in rapid and blitz.

Enjoy this week's puzzles from the Gashimov Memorial rapid and blitz.

Double-attacks come in various forms. In our **example**, White forks the queen and the d6-square, which in turn forks the king and misplaced b7-rook. **21. Ne4!** Black played **21. ... Qh5** As a **bonus**, what is White's only winning move after 21. ... Qe7? **22. Nxd6+** Using the pin on the open e-file against Black's uncastled king to win material. **22. ... Kf8 23. Nxb7 Nxb6 24. axb6 f3** Black's last gasp

mating threat is thwarted by **25. Qf2!** and Black resigned shortly.



**# 1. WHITE TO PLAY**

**# 2. WHITE TO PLAY**

**# 3. BLACK TO PLAY**

**# 4. BLACK TO PLAY**

**# 5. WHITE TO PLAY**

**# 6. WHITE TO PLAY**

### SOLUTIONS

**1)** Know your mating patterns. Here's a hook mate: **37. Rc2+** Black resigned due to 37. ... Kd8 38. Rc8+ Ke7 39. Re8. (Abasov – Gelfand, Gabala, 2023) **2) 60. Qh7+ Kg5 61. Qg7+ Kh5 62. Rh4** mate. (Vidit – Van Foreest, Gabala, 2023) **3)** The rook is overloaded. **31. ... Rxf2! 32. Rxf2 Qe1+ 33. Kh2 Bxf2 34. Qa8+ Kh7 35. Nf6+ gxf6** The checks ran out. (Abasov – Vidit, Gabala, 2023) **4) 23. ... Rc4! 24. Kh1** White escapes

discovered checks with ...Ne5-f3+. Instead, White could break the pin, but after 24. Qe3 Rxd4 25. Rxd4 (or 25. Qxd4 Nf3+ 26. Bxf3 Bxd4 is lights out) 25. ... b1=Q White can resign. **24. ... Nc6** And White's bishop falls. (Gelfand – Mamedov, Gabala, 2023) **5)** Black's rook is ill-equipped to catch the pawn. **35. c5!** And Black resigned. A sample line: 35. ... dxc5 36. bxc5 Kf6 37. d6 Ke6 38. Bd5+ Kd7 39. Kf2 and White marches in. (Rapport – Radjabov, Gabala, 2023)

**6)** White opens the center against the uncastled king. **22. e6! Qd6** Not 22. ... fxe6 23. Qf6 Rf8 24. Rxe6+ winning. **23. Qf6! Rf8 24. Re3! d4 25. Re4** There is no good response to Rc1-e1. **25. ... Qd5 26. exf7+ Kd7 27. Re7+ Kc8 28. Qxb6** and Black resigned. (Mamedov – Van Foreest, Gabala, 2023) **Bonus) 22. Nc8!** White forks the queen and the d6-square. **22. ... Qe6 23. Ncxd6+ Bxd6 24. Nxd6+** The queen is pinned. (Suleymanli – Abasov, Gabala, 2023)