

GASHIMOV MEMORIAL, PART 1

WEDNESDAY WORKOUT ■ DECEMBER 13, 2023

BY JJ LANG

PUZZLE 1.



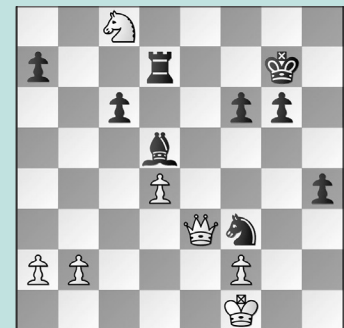
BLACK TO MOVE

PUZZLE 2.



BLACK TO MOVE

PUZZLE 3.



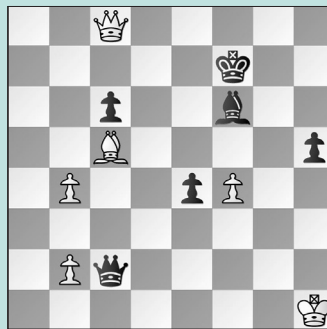
BLACK TO MOVE

PUZZLE 4.



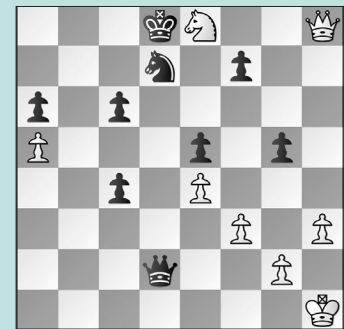
BLACK TO MOVE

PUZZLE 5.



BLACK TO MOVE

PUZZLE 6.



WHITE TO MOVE

SOLUTIONS

PUZZLE 1. 26. ... Rc3+ Black takes the king on a walk! 27. Kd4 Qf2+ 28. Ke5 While 28. Ke4 avoids the pin, he is still lost after 28. ... Qxf3+ 29. Ke5 Re3+ 30. Bxe3 Qxe3+ 31. Qe4 f6+ 32. Kd5 Rd8+ when the queen hangs with check. 28. ... Rc5 29. gxf3 Rxd5+ 30. Rxd5 Qe2+ 31. Kd4 Qxf3 and White resigned. (Arjun – Mamedov, Gabala, 2023) **PUZZLE 2.** 22. ... Nf3+ Demolition! 23. Rxf3 Even worse is 23. gxf3 Qh4 24. Qg2 Rg6, crushing. 23. ... exf3! 24. Qxf5 Rg6! 25. Rb2 Or 25. gxf3 Qxe3 is no better. 25. ... Qxe3 26. Nd1 Qe1 winning. (Arjun – Radjabov, Gabala, 2023) **PUZZLE 3.** 41. ... h3! 42. Qe8 Instead, 42. b3 was more prophylactic, but still losing thanks to a pretty variation: 42. ... h2 43.

Kg2 Nd2+ 44. Kxh2 Nf1+, winning the queen. 42. ... Bc4+ and White resigned. (Mamedov – Vidit, Gabala, 2023) **PUZZLE 4.** 19. ... Rxh3! Stunned, White resigned, as play would continue 20. gxh3 Qg3+ 21. Kh1 Qxh3+ 22. Kg1 Qg3+ 23. Kh1 Rh8+ with mate to follow. (Van Foreest – Rapport, Gabala, 2023) **PUZZLE 5.** 55. ... Qd1+! Instead, Black had to settle for a draw after 55. ... Qb1+?? 56. Bg1 Qd3 when 57. Qf5 let White hold on. 56. Kg2 Worse was 56. Bg1? Qf3+ 57. Kh2 Qxf4+ when, after any king move, for instance: 58. Kh1, Black mates in two with 58. ... Qf3+ 59. Kh2 Be5 mate. 56. ... Qf3+ 57. Kg1 Or 57. Kh2 Qxf4+ 58. Kg2 Qf3+ 59. Kg1 Qg4+ trading into a won ending. (Mamedov – Vidit, Gabala, 2023, analysis) **PUZZLE 6.** 39.

Ng7+! This would have forced a draw! Instead, after 39. g3?? c3 40. Nd6+ Kc7 41. Nxf7 c2 White resigned. 39. ... Kc7! = The tempting 39. ... Ke7?? loses: 40. Nf5+ Ke6 41. Qe8+ (while 41. Qc8? is the winning idea, Black escapes with 41. ... Qc1+ 42. Kh2 Qf4+ and a perpetual) 41. ... Kf6, and White creates an escape square: 42. h4!! gxh4 43. Qh8+ Ke6 44. Qc8! Only now! 44. ... Qc1+ 45. Kh2 Qf4+ 46. Kh3 winning. 40. Qa8! White slows down Black's c-pawn. 40. ... Nb8 The only way to play for more than a perpetual, as 40. ... c3?? 41. Ne8 is mate. 41. Qa7+ Kc8 42. Nf5! Now, if 42. ... c3, White forces repetition with 43. Ne7+ Kd8 44. Nf5 Black has no way to stop all of White's ways to force a perpetual. (Rapport – Suleymanli, Gabala, 2023, analysis)