

# GRAND SWISS, CONTINUED

WEDNESDAY WORKOUT ■ NOVEMBER 15, 2023

BY JJ LANG

PUZZLE 1.



BLACK TO MOVE

PUZZLE 2.



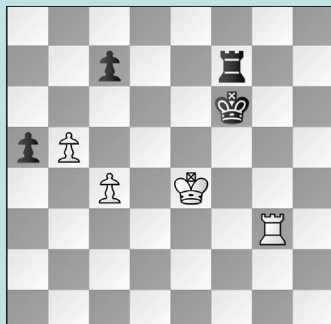
WHITE TO MOVE

PUZZLE 3.



WHITE TO MOVE

PUZZLE 4.



WHITE TO MOVE

PUZZLE 5.



BLACK TO MOVE

PUZZLE 6.



WHITE TO MOVE

## SOLUTIONS

**PUZZLE 1.** 27. ... Rxd3 The bishop looked trapped, but wasn't! 28. Bxf7+ Alternatively, 28. hxg6 Qg3+ 29. Kf1 Rf3+ also wins. 28. ... Kf8 29. Rxd3 Nxd3 30. Qe3 Qxe4+ winning. (Sindarov – Vidity, Douglas, 2023) **PUZZLE 2.** 26. Qh3! A nice double attack. 26. ... fxe5 27. Qxe6+ Bf7 The point is 27. ... Kf8 28. Rf1+ explains why the bishop was under attack on e7. 28. Qxe7 Re8 29. Qxg5 White has won two pawns and has a dominant position. Black resigned five moves later. (Fataliyeva – Paetz, Douglas, 2023) **PUZZLE 3.** 23. Nxf5 Qxf5 24. Qxa6! An unexpected back-rank threat! 24. ... Rd8 25. Qxc6 Bxg5 26. Bxg5 Qxg5 27. Qxc7 White is up two pawns and won the end-

game. (Munguntuul – Bulmaga, Douglas, 2023) **PUZZLE 4.** 54. Kd5! The active king decides matters. Importantly, the trade with 54. Rf3+? Ke6 55. Rxf7 Kxf7 is not winning: 56. Kd5 (or 56. c5 a4 57. b6 cxb6 58. cxb6 a3 also draws) 56. ... a4 is too fast for White to scoop up c7. 54. ... a4 55. c5 Only now, once Black's king cannot come to e6. Black resigned. (Aronian – Kollars, Douglas, 2023) **PUZZLE 5.** 27. ... Rfe1! White's king did not need to be cut off: the coordination of the rooks was more important. In the game, 27. ... Re2? gave White time to consolidate with 28. Bxc6 (more precise was 28. Rc1 with winning chances) 28. ... Qc5+ 29. Kh1 Qf2 30. Qh3 and Black was able to escape with a draw. 28. Kg2 Qe2+ 29. Kg1

No better was 29. Kh3 Qh5+ 30. Kg2 Re2+ winning. 29. ... Qb5 30. Kg2 Re2+ 31. Kf3 Qh5+ 32. g4 Qh3+ 33. Bg3 R8e3+ 34. Kf4 Re4+ 35. Kg5 Qh6+ 36. Kf5 Qf6 mate. (Firouzja – Niemann, Douglas, 2023, analysis) **PUZZLE 6.** 63. Kf3! Instead, 63. Kf2?? Nc3 won the e4-pawn by force, and with it the game: 64. Bc2 Nxe4+ 65. Bxe4 fxe4 66. Ke3 Ke5 67. Kf2 g4 68. Ke3 g3 69. Ke2 Kf5 70. Ke3 Kg4 and Black had too much of an attack. 63. ... Nd4+ Now, the idea with 63. ... Nc3 64. Bc2 fxe4+ 65. Bxe4 goes nowhere. 64. Kg3! f4+ Or 64. ... Nxb3 65. exf5 b5!! 66. cxb5 c4 67. b6 Nc5 68. d6 winning. 65. Kg4 Nxb3 66. Bd3 Nc1 67. Bf1 Shockingly, there is no way for Black to make progress, and White holds. (Mishra – Sarana, Douglas, 2023, analysis)