

KILLER CHESS TRAINING TRAINING

WEDNESDAY WORKOUT ■ OCTOBER 25, 2023

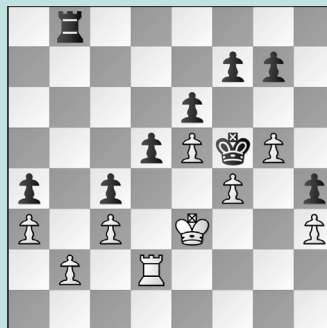
BY JJ LANG

PUZZLE 1.



WHITE TO MOVE

PUZZLE 2.



BLACK TO MOVE

PUZZLE 3.



BLACK TO MOVE

PUZZLE 4.



WHITE TO MOVE

PUZZLE 5.



WHITE TO MOVE

PUZZLE 6.



BLACK TO MOVE

SOLUTIONS

PUZZLE 1. 18. Ne5! Where is the queen supposed to go?!
18. ... Qb3 Or 18. ... Qb4 19. Qxb4 Bxb4 20. Bxb4 is a piece.
19. Qxb3 Nxb3 20. Bxb7 and White remains up a piece. (Chatalbashev – Cherniack, Denmark, 2023) **PUZZLE 2. 42. ... d4+!** Before White can blockade the d-pawn, Black breaks through with dynamics. **43. Rxd4** Alternatives: 43. cxd4? Rb3+ 44. Ke2 Rxh3 wins; 43. Kxd4?? Rd8+ 44. Ke3 Rxd2 45. Kxd2 Kxf4 is even clearer. **43. ... Rxb2 44. Rd7 Kg6 45. Kf3 Rc2** with a winning endgame. The passed pawns will be too much. (Haubro – Arizmendi, Denmark, 2023) **PUZZLE 3. 34. ... Bxf2+** Instead, **34. ... Bxe2??** was played, and after **35. Rcxe2 e4**, Black had to settle

for equality. **35. Kxf2** Or 35. Kh1 Bd3 is strong for Black. **35. ... Qa7+!** The point is the king is forced onto a light square, when ... Ba6xe2+ will be a nasty shock. (Skonnord – Rasmussen, Denmark, 2023, analysis) **PUZZLE 4. 26. Nd7+** This “cute” move does not win the Exchange, since after **26. ... Qxd7 27. Qxe5** Black plays **27. ... Bxf1** regaining the material if (if!) White recaptures on f1. But instead, White ended the game with **28. Qh8+! Ke7 29. Re1+ Kd6 30. Qe5+** when Black resigned. (Brunello – Sgircea, Denmark, 2023) **PUZZLE 5. 40. f4!** The good news? The queen isn’t trapped. The bad news? After **40. ... Qh4 41. f5!** There is no answer to f5-f6, with mate on g7 to follow. (Rasmusen – Brunello, Denmark, 2023) **PUZZLE 6. 6.** If anybody

would find a forced mate here, it’s legendary attacking Swedish grandmaster Jonny Hector. So when he did not play **25. ... Rxe2+** here, we have to ask why. Instead, with **25. ... Bxh3?**, Black’s move was less direct, and while he is still winning, he went on to lose later. It turns out, the point of the sac is incredibly subtle: **26. Kxg2 Bxh3+ 27. Kh2 Qf4+ 28. Rg3 Nf5** This is the critical line. After **29. Rcc3 Nxe3 30. Rxe3** it looks like Black did not regain enough material. However, he now wins with... **30. ... Bf1!** Devastating. ... Qf4-h4+ is coming, and there is no answer. This is hard enough to find when this position is already on the board, let alone six moves out! **31. e6 Qh4+** winning. (Haubro – Hector, Denmark 2023, analysis)