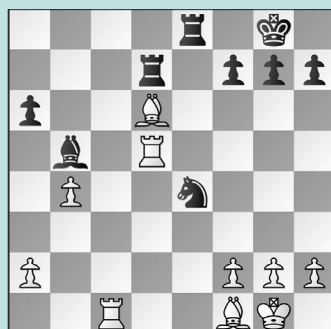


# LOUISIANA LEGEND JUDE ACERS

## WEDNESDAY WORKOUT ■ OCTOBER 11, 2023

BY JJ LANG

### PUZZLE 1.



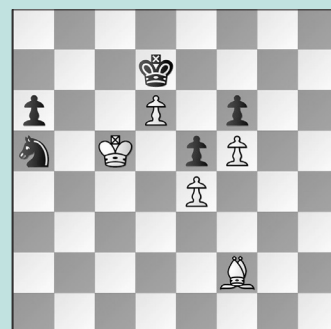
WHITE TO MOVE

### PUZZLE 2.



WHITE TO MOVE

### PUZZLE 3.



WHITE TO MOVE

### PUZZLE 4.



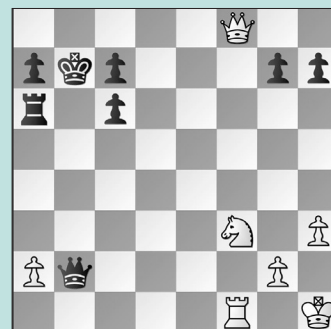
BLACK TO MOVE

### PUZZLE 5.



WHITE TO MOVE

### PUZZLE 6.



WHITE TO MOVE

## SOLUTIONS

**PUZZLE 1.** 26. **Rxb5!** **Rxd6** No better is 26. ... **Nxd6** 27. **Rd5!** **Red8** 28. **Bxa6** winning; or 26. ... **axb5** 27. **Bxb5** **Rdd8** 28. **Bxe8** **Rxe8** 29. **Bc7** winning. **27. Re5!** **Kf8** **28. Rxe8+ Kxe8** **29. Re1** **Re6** **30. Bc4** **Re7** **31. Bxa6** and **Black resigned** on move 43. (Acers – Bragg, Aspen, 1968)  
**PUZZLE 2.** **33. Qxc6+!** **Kb8** or **33. ... bxc6** 34. **Nxe7+** putting White on top. **34. Rxc6** **fxg6** **35. Nxe7** and **Black resigned** three moves later. (Acers – Skok, Opatija, 2013)  
**PUZZLE 3.** **51. Bh4** **Nb7+** **52. Kd5!** **Nxd6** No better is 52. ... **a5** 53. **Bxf6** **Nxd6** 54. **Bxe5** winning. **53. Bxf6** **Nc8** Also failing is 53. ... **Nf7** 54. **Bxe5** **Nxe5** 55. **Kxe5** **a5** 56. **Kd5**, when the connected passers are decisive. **54. Bxe5** **Ne7+**

**55. Kc4** winning. (Acers – Wilkerson, Aspen, 1968)  
**PUZZLE 4.** **20. ... Rxf3+!** **21. Kg1** Of course, not 21. **Nxf3??** **Bh3** mate. **21. ... h5!** **22. Kg2** The queen is a goner: 22. **Qc1** **Bh3** 23. **Qd1** **Ref8** is lights out. **22. ... Rxc3** **23. Bxc3** **Bxd1** Now, Black is winning, but White managed to nab a draw 30 moves later. (Browne – Acers, Sparks, NV, 1970)  
**PUZZLE 5.** **28. Rxf1!** Here, the engine finds a remarkable improvement. Instead, **28. f8=Q+?!** was played in the game, but Black was able to hold on for a **draw** given that White had relatively few pawns. **28. ... Rxf8** **29. Qxf8+ Kb7** (not 29. ... **Kd7??** 30. **Rd1+ Ke6** 31. **Ng5+** winning) **30. Rxf1** **Ra6** **31. Qf5** **Rxa2** and we have reached puzzle **6.** **28. ... Kb7** Or 28. ... **Qf6** 29. **Qe8+ Kb7** 30. **Qxh8** **Qxf7**

31. **Qxh7** winning. **29. Ng5!** The threat is stronger than the execution! **29. ... Qb4** Not 29. ... **Qxa2** 30. **Ne6** with a decisive attack. **30. Qe8** **Qb5** **31. f8=Q** **Qxf1+** **32. Qxf1** **Rxe8** **33. Qf7** winning. (Acers – Sveshnikov, Kamena Vourla, 2012, Analysis) **PUZZLE 6.** **31. Ne1!!** The plan is to pressure the c7-pawn while guarding the e1-knight, then play **Kh1-h2** and **Ne1-d3-c5+** with a winning attack. Instead, **31. Qf5** was played, but after **31. ... Rxa2**, the same try with 32. **Ne1** is too slow, as Black is in time with 32. ... **Ra1**. Instead, with **32. Rb1** **Ra1**, Black managed to **draw**. **31. ... Rxa2** **32. Rf7** **Qe2** **33. Qb4+** **Qb5** **34. Qe7** **Qb6** **35. Rxc7** **Ra1** **36. Kh2** **Qa5** **37. Nd3** winning. (Acers – Sveshnikov, Kamena Vourla, 2012, Analysis)