

# WORLD JUNIOR CHAMPIONSHIPS

## WEDNESDAY WORKOUT ■ OCTOBER 4, 2023

BY JJ LANG

### PUZZLE 1.



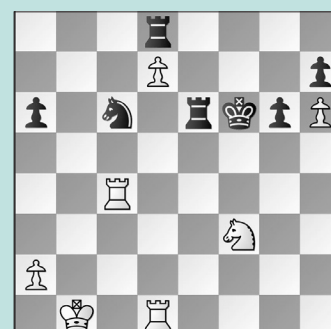
BLACK TO MOVE

### PUZZLE 2.



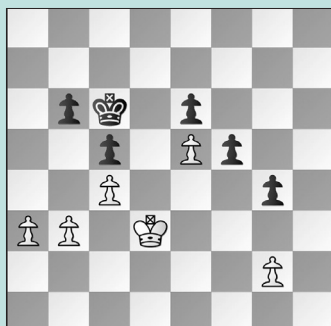
WHITE TO MOVE

### PUZZLE 3.



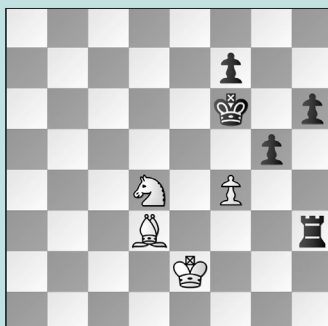
WHITE TO MOVE

### PUZZLE 4.



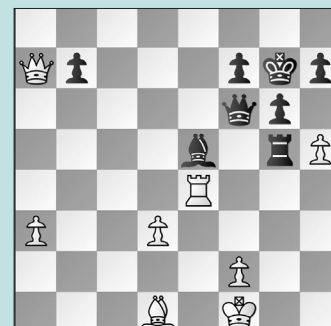
BLACK TO MOVE

### PUZZLE 5.



WHITE TO MOVE

### PUZZLE 6.



BLACK TO MOVE

## SOLUTIONS

**PUZZLE 1.** 24. ... Bxe2! 25. Qxe2 Qd6! Loose pieces drop off! 26. Rxc7 Qxc7 and Black resigned on move 40. (Sosovickova – Yip, Mexico City, 2023) **PUZZLE 2.** 31. Rh8+! White is winning, but this is the most forcing way. 31. ... Kg7 After 31. ... Kxh8 32. Qxf7, White has no way to stop Re1-h1+ without allowing either Re1xe7 or Qf7xc7. 32. Rh7+ Kxh7 33. Qxf7+ Kh6 34. g5+! Another precise, puzzle-like move. 34. ... Kh5 35. Rh1+ Kxg5 36. Rg1+ Kh4 37. Qh7 mate. (Stearman – Ramos Silve, Mexico City, 2023) **PUZZLE 3.** 40. Rf4+! It is counterintuitive to force Black's king towards the passed pawn, but after 40. ... Ke7 41. Ng5! The crown jewel is untouchable. 41. ... Rb8+

The logical 41. ... Rf6? is refuted by geometric symmetry: 42. Re4+! Kf8 43. Nxh7+ winning. 42. Ka1 Re5 43. Rf7+ and Black resigned five moves later. (Yip – Mkrtychyan, Mexico City, 2023) **PUZZLE 4.** 43. ... b5! Black plays “on the weak side,” as White's king is stuck in “the box” of the f- and g-pawns, allowing Black to clean up on the queenside. Alternatives: 43. ... Kd7 44. b4! stops White from making progress on the queenside with 44. ... cxb4 (or 44. ... Kc6 45. b5+! locks Black's king out) 45. axb4 Kc6 46. Kd4 holds. 44. b4 cxb4 45. axb4 bxc4+ 46. Kxc4 Kb6 47. Kd4 Kb5 and White resigned on move 53. (Ibarra – Ghazarian, Mexico City, 2023) **PUZZLE 5.** 49. Nc2! With the pawn on f4, Black's king will not enter. Instead,

White played 49. fxg5+?, and after 49. ... hxg5 50. Nf3 g4 51. Ne1 Kg5 52. Ng2 f5 Black won. 49. ... g4 After 49. ... gxf4 50. Ne1!, White has better chances against the disconnected pawns. 50. Be4 White holds after, e.g.: 50. ... Rh2+ 51. Ke3 h5 52. Nd4 h4 53. Nf5, as White meets ... g4-g3 with Ke3-f3 and ... h4-h3 with Nf5-g3. (Melian – Niemann, Mexico City, 2023, analysis) **PUZZLE 6.** 34. ... b6!! To appreciate this, note that with 34. ... gxh5 35. Qe3 Bh2, White can try to trade into a drawn ending with 36. Qd4!. 35. Qa8 gxh5 36. Re3 Bh2 Now, Black crashes through. 37. Re8 Rg1+ 38. Ke2 Kh6 39. Bc2 Qc3 40. Rc8 Re1+ 41. Kf3 Qf6+ 42. Kg2 Rg1+ and White resigned. (Niemann – Woodward, Mexico City, 2023)