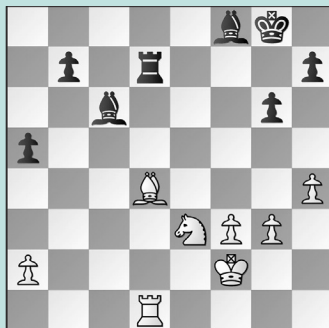


# IM JEREMY SILMAN (1954-2023)

## WEDNESDAY WORKOUT ■ SEPTEMBER 27, 2023

BY JOHN HARTMANN

### PUZZLE 1.



BLACK TO MOVE

### PUZZLE 2.



BLACK TO MOVE

### PUZZLE 3.



WHITE TO MOVE

### PUZZLE 4.



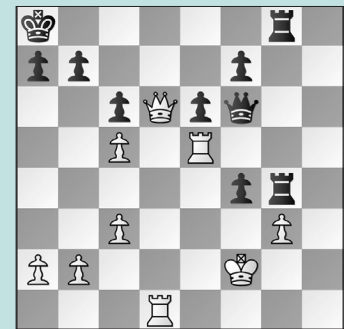
WHITE TO MOVE

### PUZZLE 5.



BLACK TO MOVE

### PUZZLE 6.



WHITE TO MOVE

## SOLUTIONS

**PUZZLE 1.** 35. ... **Ba4!** 36. **Rd2** The attempt with 36. **Ng4!**? is very clever, threatening to meet ... **Ba4xd1** with **Ng4-f6+**. But Black has 36. ... **Bg7!** simultaneously covering the forking square and adding an attacker to the pinned piece! 36. ... **Bb4** Equivalent is 36. ... **Bg7**. 37. **Rd3 Bc5** winning. (Peters – Silman, Los Angeles, 1989) **PUZZLE 2.** 24. ... **Rxg3!** Black crashes through. 25. **fxg3 Rxg3** 26. **Qf2 Rxc3+** 27. **Kd2** Of course, 27. **Kb2** was no better. 27. ... **Qxb4** Simple and efficient. 28. **Ke2** White saves the queen from threat of ... **Rc3-f3**, but **resigned** after 28. ... **Qb5+**. (Lawless – Silman, San Francisco, 1980) **PUZZLE 3.** 28. **Rxe5! Rxe5** 29. **d6!** An important *inter-*

*mezzo*, but don't pat yourself on the back if you did not anticipate Black's last trick: 29. ... **Rf5!**? 30. **Qxf5!** Not 30. **Rxf5?? Ra1+** winning. 30. ... **gxf5** 31. **dxg7** winning. (Silman – Syrett, Monterrey, 1977) **PUZZLE 4.** 25. **d6!** **Qd7** 26. **Rxg6+! hxg6** 27. **Qxg6+ Kf8** 28. **Qf6**. Note that 28. **Qh7** is of course faster. 28. ... **Kg8** 29. **Rf3** winning. (Silman – Allen, Portland, 1985) **PUZZLE 5.** Black missed 22. ... **Qc5+!**. Instead, 22. ... **Bxe2** was played, when 23. **Bxe7** forced Black to clinch a draw with 23. ... **Qg6+** 24. **Kf2 Bxd1** 25. **Bxf8 Bf3** and they shook hands six moves later. 23. **Kh2** White might have thought he would remain "piece-up" here, however, Black had a fantastic resource with 23. **Qf2 Qxg5!**, with the point that 24. **hxg4** allows

24. ... **Bc5!** 25. **Nd4 Rd8** 26. **Nce2 Qxg4+** with the threat of ... **Rd8-d6** and a mating attack.; The alternative 23. **Qe3** allows 23. ... **Bxe2!** 24. **Nxe2 Qxg5+** winning. 23. ... **Bf3!** with the threat of ... **Qf2** mate. Not 23. ... **Qxg5?** 24. **Qxg5 Bxg5** 25. **hxg4** when White is winning. 24. **Nxe4 Bxe4** 25. **Bxe7 Qxe7** 26. **Ng3 Bc6**. (Ornstein – Silman, New York, 1987, analysis) **PUZZLE 6.** 34. **Rf5!! fxg3+** After 34. ... **Qh8** 35. **Rh5!** **Qf6** 36. **Rf5** would draw.; The simple point was that 34. ... **Qxf5??** 35. **Qd8+** was a deadly deflection. 35. **Kg2 Qh4** 36. **Rh5!** This is the real point - the rook can't be taken lest there be back-rank mate. 36. ... **Qf6** 37. **Rf5 Qh8** 38. **Rh5 Qf6** 39. **Rf5 Qh4** 40. **Rh5 Qf6** 41. **Rf5** White holds the draw. (Leal – Silman, Santa Monica, 1986)