

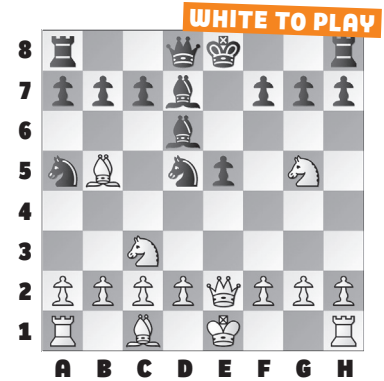
COVERING ALL THE BASES

The downside to playing aggressive openings is our pieces are not always safe. We have to keep an eye out for our own hanging pieces.

In some of these exercises, White is ready to attack. In others, the “obvious” move is refuted.

In our **example**, White must not get greedy by capturing the d5-knight, as White’s own knight hangs on g5. Instead, White rids the possibility of a fork with ... c7-c6 by playing **9. Bxd7+!**. Note that 9. Nxd5 does not win a piece after either 9. ... Qxg5 or 9. ... Bxb5 10. Qxb5+ c6. Now **9. ... Qxd7 10. Nxd5** wins a piece as the queen does not hit the

hanging g5-knight. As a **bonus**, can you refute **9. ... Kxd7?**



1. WHITE TO PLAY

2. WHITE TO PLAY

3. WHITE TO PLAY

4. WHITE TO PLAY

5. WHITE TO PLAY

6. WHITE TO PLAY

SOLUTIONS

1) 8. Bf3! Qxg5 Black wins the piece, but with **9. Bxc6+** White gets it right back... **9. ... Bd7 10. Bxa8** With interest! (Oleg946 – Vahe_Dan, lichess.org, 2023) **2) 10. Qxb7!** We’ve seen capturing the “poison pawn” on b7 get White into trouble before, but not here. **10. ... Ne7** is best. **11. Qb5+ Qd7 12. Qxe5** White’s up three pawns and about to castle. (bluft85 – mohammad-a-sh, lichess.org, 2023) **3) 11. Nxf7!** We should

always be alert for thematic tactics. **11. ... Kxf7 12. Qf3+ Ke6 13. Re1+ Ne5 14. Bf4!** Return of the pins! **14. ... Bf6 15. c3** White is winning. (NicholasElliott – Enjoy_Chess_88, lichess.org, 2023) **4) 14. ... Bc8!** Black uses the open file to win the bishop. (boppintothebeat – Blindbandit99, lichess.org, 2023) **5) 16. ... Qe6!** Black had to stop both the threats of Qg4-d7 and Bc1-g5. Instead, after 16. ... Bc6?? Black stopped mate, but not the

pin. After 17. Bg5, Black resigned. (ohmydomdom – Ahmadraihan15, lichess.org, 2023) **6) 12. Ndf3!** White reveals the threat on the e3-knight while also defending the hanging g5-knight! **12. ... Bf4** and after **13. Bxe3 Nxe3 14. Qd3 Bxg5 15. Nxc5 Qxg5 16. Rxe3+** White is winning. (emiliooo – Sunilkapoor, lichess.org, 2023) **Bonus) 10. Qg4+ Kc6** (or **10. ... Ke8 11. Nxd5** winning) **11. Qa4+** with mate to follow. (A0square – ashu_1992, lichess.org, 2023)