

HARING HAPPENINGS

WEDNESDAY WORKOUT ■ AUGUST 30, 2023

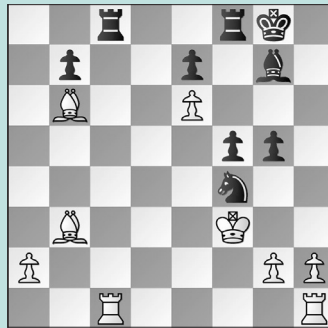
BY JJ LANG

PUZZLE 1.



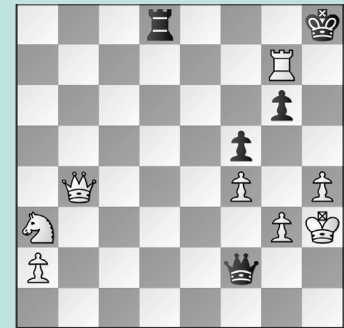
BLACK TO MOVE

PUZZLE 2.



BLACK TO MOVE

PUZZLE 3.



BLACK TO MOVE

PUZZLE 4.



WHITE TO MOVE

PUZZLE 5.



WHITE TO MOVE

PUZZLE 6.



BLACK TO MOVE

SOLUTIONS

PUZZLE 1. 36. ... Rxd4 What a bizarre position. The knight was only attacked once — by a higher-valued piece — no less, and defended twice by pawns. And yet! **37. cxd4 Rxc2** and **Black won** shortly. (Ramesh – Ram, Grand Rapids, 2023) **PUZZLE 2. 28. ... g4+** Always look for the follow-up check! Note that 28. ... Rxc1 transposes: 29. Rxc1 g4+ is the same. **29. Kxf4 Bh6+ 30. Ke5 Rxc1 31. Rxc1** And **White resigned** on move 42. (Jha – Paragua, Grand Rapids, 2023). **PUZZLE 3.** Beware the automatic recapture! **54. ... Qf1+** A lovely *intermezzo*. Black uses forcing moves to cover the e7-square. **55. Kh2 Qe2+ 56. Kh3 Kxg7** Without Qb4-e7+, White had no way to regain

the lost material, and eventually **Black won**. (Braddy – Ram, Grand Rapids, 2023) **PUZZLE 4. 22. Nf6+! Bxf6** Even worse would be 22. ... gxf6 23. Bxh7+ (note that 23. gxf6 is also dominant) 23. ... Kxh7 24. Qh5+ Kg7 25. gxf6+ winning. **23. Bxh7+ Kxh7 24. Qh5+ Kg8 25. gxf6 gxf6** The intermediate 25. ... Nd5 fails to 26. fxf7 winning. **26. Kh1!** The fastest win. **26. ... Re8 27. Rg1+ Kf8 28. Qh6+ Ke7 29. exf6** mate. (Jou – Matus, Grand Rapids, 2023) **PUZZLE 5. 24. Nxc4 Nxc4 25. Bxc4 Qxc4 26. Qxa8!** Does this look familiar? **26. ... Rxa8 27. Re8+ Bf8 28. Rxa8 Qd5** Not 28. ... Kg7 29. Rxf8! Kxf8 30. Bh6+ Kg8 31. Re8 mate. **29. Rxf8+** and **Black resigned** shortly. (Yan – Zhou, Grand Rapids, 2023) **PUZZLE 6. 19. ... e5!** With White's

king stuck in the center, Black would have a huge initiative due to the bishop pair and White's inept h1-rook. In the game, **19. ... Rb8** Was Black's choice, but after **20. Ra2 Qc6 21. Rb2 Rxb2 22. Qxb2** White is better because she managed to trade off Black's only rook and was able to consolidate. In this line, if White tried, say, **20. Rb1**, then after **20. ... Qd7 21. Rb6 Bc4 22. Bb2 exd4 23. Bxd4 Qg4**, White's position is in shambles. Even worse is **20. dxe5 Rxc5! 21. Qd1 d4! 22. f4 Qc6!** when Black's initiative is even more apparent. Clearly, White's king does not want to be in the center here, so Black really should have busted open the center first and worked out the details later! (Paragua – Fei, Grand Rapids, 2023, analysis)