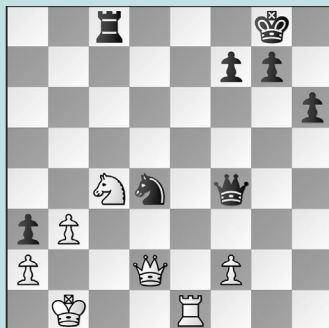


BARBER BONANZA

WEDNESDAY WORKOUT ■ AUGUST 23, 2023

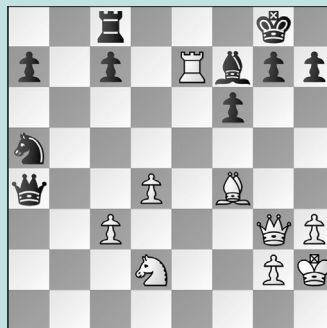
BY JJ LANG

PUZZLE 1.



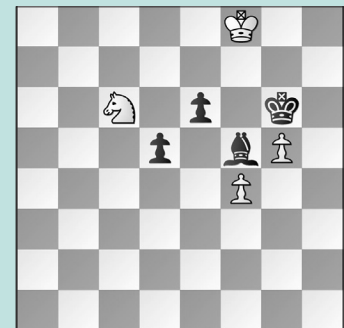
BLACK TO MOVE

PUZZLE 2.



WHITE TO MOVE

PUZZLE 3.



WHITE TO MOVE

PUZZLE 4.



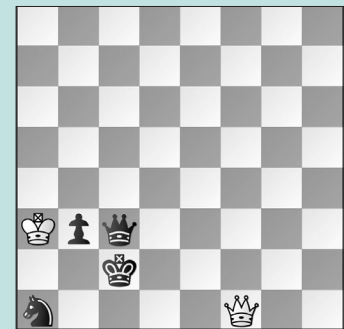
BLACK TO MOVE

PUZZLE 5.



BLACK TO MOVE

PUZZLE 6.



WHITE TO MOVE

SOLUTIONS

PUZZLE 1. If only Black could play ... Nd4-f3 with the fork. Wait! **41. ... Qf5+ 42. Kc1 Nf3** and **White resigned.** (Tao – Feng, Grand Rapids, 2023) **PUZZLE 2. 28. Bh6 g5** The alternative 28. ... g6 avoids the sac on g5, but is just as bad: 29. Ne4 Qc6 30. Qf4! with mate coming. **29. Bxg5 fxg5 30. Qxg5+ Kf8 31. Qf6** when **Black resigned.** (Deng – Ren, Grand Rapids, 2023) **PUZZLE 3. 85. Ne7+ Kh5** This move gets Black mated on the g5-square after both pawns queen, but the alternative 85. ... Kh7 86. Nxf5 exf5 87. Kf7 d4 88. g6+ loses vital time, allowing White to queen well in advance. **86. Nxf5 exf5 87. Kf7 d4 88. g6 d3 89. g7 d2 90. g8=Q d1=Q 91. Qg5** mate. (Zhao – Malireddy, Grand

Rapids, 2023) **PUZZLE 4. 31. ... Bxc4! 32. dxc4 Qe6** when **White resigned:** once the queen enters on c4 it is over. A nice example of “go one move deeper,” rather than assume an equal trade cannot be so bad. (Jiang – Hardaway, Grand Rapids, 2023) **PUZZLE 5. 28. ... Qc8!** Not an easy move to find, but the only one to win. Instead, Black played **28. ... Bc8??**, when the back rank was weakened and the queen was unable to ‘get over’ in time after **29. Qh4 Ra7 30. Rad1 Bg7 31. f5 Be5 32. f6 Be6 33. f7 Qc8 34. Qg5 Bxd5** when White would have been winning with 35. exd5. (instead White played **35. Qg8+? Ke7 36. f8=Q+?? Qxf8** and **Black won** on move 46); The tempting 28. ... Ne3?! allows White to bail out with 29. Nf5 Nxd5 30. Qh6+ Kf7

31. Qh5+ and a draw; Hopefully you were not fooled by 28. ... Qxd5?? 29. exd5 Bxd5+ 30. Rf3 Nd2 which looks good until you remember to look for 31. Qf5+. **29. Qh4 Qe6** winning. (Wilson – Zhao, Grand Rapids, 2023, analysis) **PUZZLE 6. 70. Qf5+!** The point is that White cannot allow Black’s king to the b1-square, as then checks along the first rank will be met with the interposing ... Qc3-c1+, winning. Instead, White played **70. Qe2+??** and after **70. ... Kb1 71. Qa2+ bxa2+, White resigned. 70. ... Kc1 71. Qf1+ Kc2** This would be Black’s only sensible try, to guard the b2-square in preparation of ... Qc3-a5+, but now White holds with **72. Qf5+** and a **draw** by repetition. (Lu – Wilson, Grand Rapids, 2023, analysis)