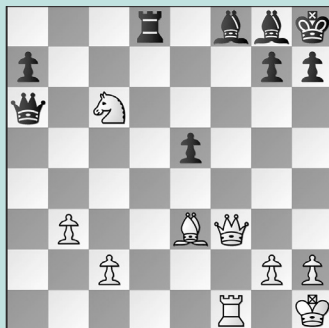


TIMELESS TACTICS

WEDNESDAY WORKOUT ■ AUGUST 16, 2023

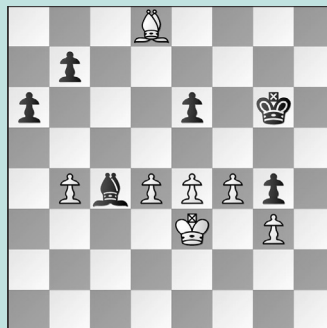
BY JJ LANG

PUZZLE 1.



BLACK TO MOVE

PUZZLE 2.



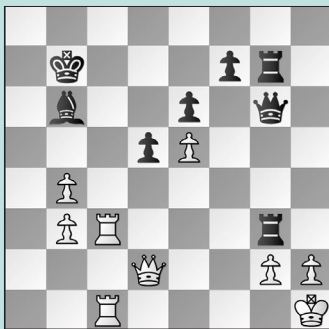
WHITE TO MOVE

PUZZLE 3.



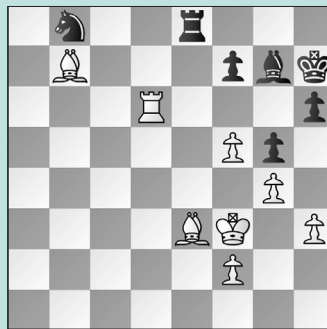
BLACK TO MOVE

PUZZLE 4.



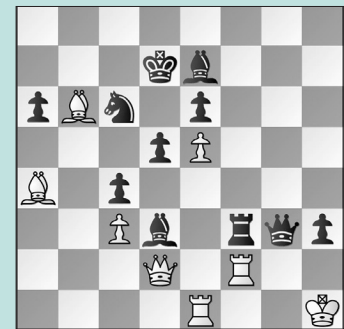
WHITE TO MOVE

PUZZLE 5.



BLACK TO MOVE

PUZZLE 6.



WHITE TO MOVE

SOLUTIONS

PUZZLE 1. 32. ... e4! White resigned, as there is no way for the overloaded queen to continue to protect both the loose knight and the loose rook! Once again, the timeless adage LPDO (Loose Pieces Drop Off) holds true. (Kosokin – Fedorowicz, Grand Rapids, 2023) **PUZZLE 2. 37. d5! exd5** Black cannot hold with 37. ... Kf7, as after 38. dxe6+ Bxe6 39. f5, White is winning. **38. f5+ Kf7 39. e5 Ke8 40. Bb6 Bb3 41. e6 Ke7 42. Bc5+ Kf6 43. Kf4!** The king is too powerful. (Fedorowicz – Truelson, Grand Rapids, 2023) **PUZZLE 3. 35. ... Nxg4! 36. fxg4 f3+! 37. Kh2** Taking is also doomed: 37. Kxf3 Qg1! 38. Ne3 Bxg4+! 39. Nxg4 Qg3+ 40. Ke2 Qxg4+ 41. Ke3 Bg5+ when White can

resign. **37. ... Bg3+ 38. Kh3 Kg7! 39. Qe3 Bf4** winning. (Rhine – Managadze, Grand Rapids, 2023) **PUZZLE 4.** If Black had gone for a different variation, he could have reached this position, where it looks like he just won a bishop on g3. However, White has a brilliant refutation. **39. Rxc3!** Not 39. hxg3?? Qh5 mate. **39. ... Qxc3 40. Qc2!!** White both threatens a mating net with Qc2-c8 and Rc1-a1, and also threatens h2xg3 by defending the h7-square that previously began Black's mating net! White wins, as Black must part with the queen to save mate. Of course, White could not play 40. hxg3?? due to 40. ... Rh7+ 41. Qh6 Rxh6 mate. (Kraai – Managadze, Grand Rapids, 2023, analysis) **PUZZLE 5. 41. ... Be5!** It was imperative to get

the bishop out immediately, as Black can now use the vacated g7-square for the king and avoid having to play the fatally weakening ... f7-f6. In the game, Black played **41. ... Re7?? 42. Be4 f6 43. Rd8 Nd7 44. Bd5 Ne5+ 45. Kg3 Rd7 46. Bg8+ Kh8 47. Ra8 Nc6 48. Bb6 Ne7 49. Be6+** and resigned nine moves later. **42. Rd3 Re7 43. Be4 Kg7** winning (Jing – Hanke, Grand Rapids, 2023, analysis) **PUZZLE 6. 35. Qh6!!** The only move. White abandons the f2-rook in favor of a perpetual! Instead, after **35. Rxf3? Qxf3+ 36. Kh2 Bh4! 37. Rg1 Be4! 38. Rg7+**, White resigned on move 45 once the checks ran out. **35. ... Rxf2 36. Bxc6+ Kxc6 37. Qxe6+ Kb5 38. Qd7+ Kxb6 39. Qe6+** White has a draw. (Liu – Abraham, Grand Rapids, 2023, analysis)