

U.S. OPEN HIGHLIGHTS

WEDNESDAY WORKOUT ■ AUGUST 09, 2023

BY JJ LANG

PUZZLE 1.



WHITE TO MOVE

PUZZLE 2.



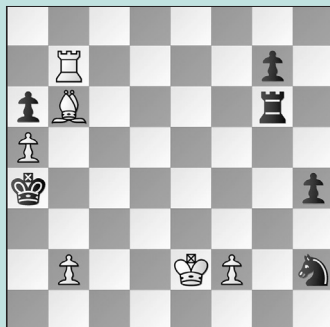
BLACK TO MOVE

PUZZLE 3.



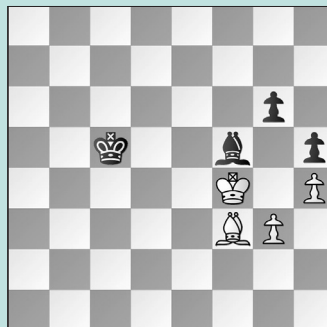
BLACK TO MOVE

PUZZLE 4.



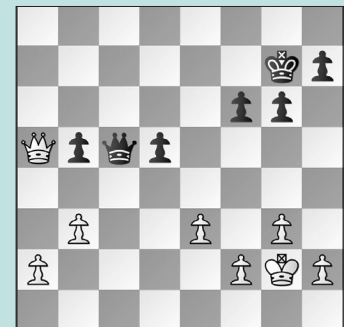
WHITE TO MOVE

PUZZLE 5.



BLACK TO MOVE

PUZZLE 6.



BLACK TO MOVE

SOLUTIONS

Please enjoy a double-dose of tactics from the recently concluded **2023 U.S. Open** in Grand Rapids, MI. Keep an eye out for puzzles **8** and **11**, in particular, which could have changed the course of the entire tournament! And stay tuned in the coming weeks for worksheets from each of the invitational tournaments.

PUZZLE 1. 28. **Bxe4!** **gxf4** 29. **Bh7+!** Not 29. **Bxd5+??** **Rxd5!** winning. 29. ... **Kxh7** 30. **Rxe5** and **White won**. (Tiglon – Singh, Grand Rapids, 2023) **PUZZLE 2.** 24. ... **Rg6!** White's last move, 24. **Qd1**, left the bishop loose on d3, and White is too slow to reroute the queen in time. 25. **g3** No better was 25. **Qh5** **Rxg2+ 26. Kh1** **Rxh2+**, as after 27. **Kg1**

Rg2+ 28. Kh1 **Rg5+**, winning. 25. ... **Qxd3 26. Qh5** **Qf3** and **White resigned**. (Donham – Markzon, Grand Rapids, 2023) **PUZZLE 3.** 27. ... **Rxc1+** Black wins the knight via a clever re-pinning: 28. **Nxc1** **Qc2 29. Nd3** **Qd1+** 30. **Kg2** **Nb4!** and **Black won** on move 41. (Campbell – Neal, Grand Rapids, 2023) **PUZZLE 4.** 37. **Bc5!** A very surprising mating net! 37. ... **h3** Black could not escape with 37. ... **Kxa5**, as White had planned 38. **b3** **Rg4 39. Bd6!** with mate to follow. 38. **b3+** **Kxa5 39. Bb4** mate. (Liang – Srivatshav, Grand Rapids, 2023) **PUZZLE 5.** 59. ... **Kd6!** Instead, Black lost after 59. ... **Bb1?? 60. Ke5!** (not 60. **Be4? Bxe4 61. Kxe4** **Kd6!** when Black holds) 60. ... **Bc2 61. Bd5! Bd3 62. Bf7** **Bc2 63. Kf6** and **Black resigned** on move 67. 60. **Bxh5** **Bb1 61. Bg4**

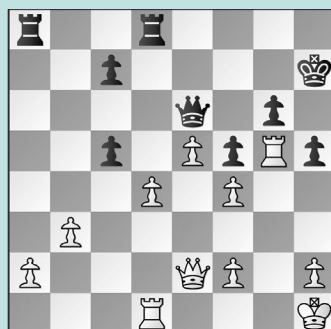
Ke7 With a **draw**, as White's extra pawn is the wrong color and Black's king is close enough to its promoting square. (Dehmelt – Fairbairn, Grand Rapids, 2023, analysis) **PUZZLE 6.** 40. ... **d4!** Black needed activity over everything. Instead, 40. ... **Qc6??** lost in the game after 41. **Qa7+ Kf8 42. Qd4** **Kg7 43. Qa7+ Kh6 44. Qd4** **Kg7 45. h4** with a pressing **advantage for White** due to Black's passive queen. 41. **exd4** **Qc6+!** 42. **Kh3** **Qd7+** Now, a **draw** is the most likely outcome. (Karthi – Leighton, Grand Rapids, 2023, analysis) **PUZZLE 7.** 29. **d5** **Rxd5** Now, more forcing was 30. **Rxh5+!** Instead, 30. **Rdg1** was played, and **Black resigned** after 30. ... **Rd4 31. Qf3** **Rxa2 32. Rxh5+** 30. ... **Kg7** Black was also lost after 30. ... **gxh5 31. Qxh5+** **Kg7**

U.S. OPEN HIGHLIGHTS

WEDNESDAY WORKOUT ■ AUGUST 09, 2023

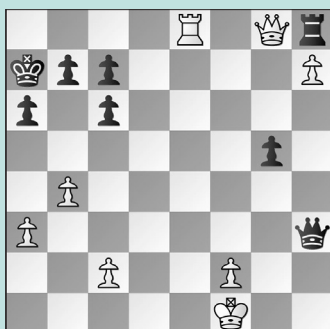
BY JJ LANG

PUZZLE 7.



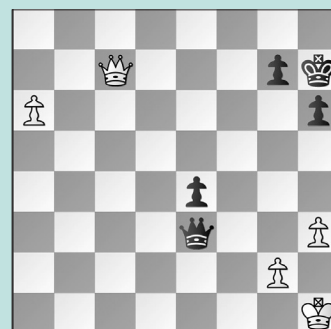
WHITE TO MOVE

PUZZLE 8.



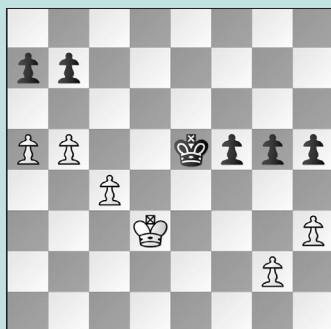
WHITE TO MOVE

PUZZLE 9.



BLACK TO MOVE

PUZZLE 10.



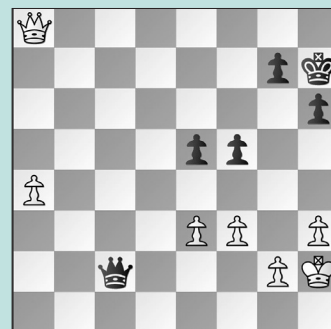
BLACK TO MOVE

PUZZLE 11.



WHITE TO MOVE

PUZZLE 12.



WHITE TO MOVE

32. Rg1+ Kf8 33. Qh8+ Ke7 34. Rg7+. **31. Rg1** when **White is winning**. (Liang – Homa, Grand Rapids, 2023) **PUZZLE 8. 39. Ke1!!** An interesting alternative, 39. Kg1!, would have left White close to winning, but 39. ... Qg4+ 40. Kf1 Qd1+! keeps Black in the game.; Instead, **White lost** after **39. Ke2?? Qh5+** when resignation was basically forced. **39. ... Qc3+ 40. Kd1 Qf3+ 41. Kd2 Qxf2+ 42. Kc3 Qf6+ 43. Kb3 Qf3+ 44. Kb2 Qf6+ 45. Ka2** and the checks have run out. (Dehmelt – Tang, Grand Rapids, 2023, analysis) **PUZZLE 9. 34. ... Qd3!** In the game, Black lost with **34. ... Qa3?? 35. a7 Qa6** (also lost is 35. ... e3 36. Qc2+ Kg8 37. Qc8+ Kh7 38. a8=Q winning) **36. Qb8 Qf1+ 37. Kh2 e3 38. a8=Q e2 39. Qe4+** when **Black resigned. 35. a7 e3 36.**

a8=Q e2 and **Black draws**, since White has no checks or ways to stop ... Qd3-d1+ followed by ... e2-e1=Q. (Morlien – Sairam, Grand Rapids, 2023, analysis) **PUZZLE 10. 38. ... Kd6!!** Black acquiesced to a **draw** in the game after **38. ... b6?? 39. axb6 axb6 40. c5! bxc5** when **41. b6** forced the handshake. **39. Kd4** Alternatives: 39. g3 Kc5 wins; 39. b6 axb6 40. axb6 Kc5 is the same; 39. Ke3 Kc5 40. h4 gxh4 41. Kf4 Kxc4 42. a6 b6 wins. **39. ... b6!** Everything else loses. **40. a6 h4!** *Zugzwang*. (Shafer – Shabalov, Grand Rapids, 2023, analysis) **PUZZLE 11. 29. Rxe5!** The sac forces a win, but not without some subtle *zwischenzugs*. After **29. Qd7?!** and the game went on (see **Puzzle 8**). **29. ... Rxe5** Not 29. ... Qxe5 30. Qxe5 Rxe5 31. h6 Re8 32. Kg2 winning.

30. h6! Qe7 31. h7 Qe8 32. Qxe5 Qxe5 33. Rd8+ Ka7 34. h8=Q Black does not have a perpetual. (Dehmelt – Tang, Grand Rapids, 2023, analysis) **PUZZLE 12. 28. Qa5!** White could also play 28. Qf8! with the same idea. In either case, Black is frozen: there is no ... e5-e4, as the f5-pawn falls, and there is no ... Qc2-c5. Instead, **28. a5?** was played in the game: **28. ... Qc5 29. a6 Qxe3??** (the draw was with 29. ... e4! 30. a7 exf3 31. Qb8 Qc2! 32. Qg3 Qa2 33. Qxf3 Qxa7 holding) **30. Qc6??** (winning was 30. Qc8! e4 31. Qxf5+ cleaning up) **30. ... e4 31. fxe4 Qf4+ 32. Kg1 Qe3+** when the game went on (see **Puzzle 9**). **28. ... Qb2 29. Qc5 Qa1 30. a5** and Black has no way to create counterplay. (Morlien – Sairam, Grand Rapids, 2023, analysis)