

INVITE-ONLY TACTICS

WEDNESDAY WORKOUT ■ AUGUST 02, 2023

BY JJ LANG

PUZZLE 1.



BLACK TO MOVE

PUZZLE 2.



WHITE TO MOVE

PUZZLE 3.



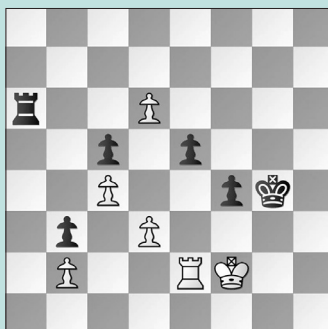
BLACK TO MOVE

PUZZLE 4.



BLACK TO MOVE

PUZZLE 5.



WHITE TO MOVE

PUZZLE 6.



WHITE TO MOVE

SOLUTIONS

PUZZLE 1. 19 ... **ccb5!** White's 19. b5 was too greedy. Likely, 20. **Bxb7??** was the intention, but White realized that he'd lose more than a pawn, so instead he played 20. **Qb1** and lost swiftly rather than lose the queen after 20. ... **Bxh2+ 21. Nxb2 Rxc2** (Hebbar – Sun, Grand Rapids, 2023, analysis) **PUZZLE 2.** 33. **Nxf7!** Instead, Kraai played 33. **Ne4?**, when Black had enough activity to hold after 33. ... **f5 34. Ng5 Rc8 35. Nxb7 Ne5+ 36. Kb5 Rb8+** but White won later. 33. ... **h6** Here, White has the forcing 34. **Rxd7+ Kxd7 35. Ne5+ Kc7 36. Nxc6** with a winning endgame. (Kraai – Hulsey, Grand Rapids, 2023, analysis) **PUZZLE 3.** 10. ... **Qxd5!** White resigned due to 11. **cxd5**

Nf3+ 12. Kf1 Bh3 mate (Burnett – Sloan, Grand Rapids, 2023) **PUZZLE 4.** 28. ... **Qg5!** The only move. Instead, with 28. ... **Bg7??**, Black lost instantly: 29. **Rxf7! Qg5** (not 29. ... **Kxf7 30. Qxe6+ Kf8 31. Qf7** mate) 30. **Qxe6 Kh8 31. Rf4** winning. 29. **Qxg5+** was forced. Alternatives: 29. **Qh3??** Nd2 with the fork; 29. **Qe2??** Nxb3+ 30. **hxb3 Bxb3!** leads to mate. 29. ... **Nxb3** The game goes on. (Feng – Venkatesh, Grand Rapids, 2023, analysis) **PUZZLE 5.** 63. **d4!!** Instead, 63. **Rxe5** was played in the game, and White was losing after 63. ... **Rxd6 64. Rxc5 Rxd3 65. Rd5 Rh3. 63. ... exd4** Not 63. ... **cxd4?? 64. c5!** When White is winning.; The other capture, 63. ... **Rxd6**, gives up any activity after 64. **dxe5 Re6 65. Re4! Kf5 66. Kf3. 64. Re6! Ra8 65. d7 Rd8 66. Re7**

White has enough activity to hold. (Shafer – Ren, Grand Rapids, 2023, Analysis) **PUZZLE 6.** 29. **Rh5!!** Consider that Black is threatening mate with 29. ... **Bc6-b5**. Instead, 29. **Ne5??** was played, and after 29. ... **dxe5?? 30. h8=Q+?** (correct was 30. **Qg2+** with a winning endgame) **Rxb8 31. Qg4+ Kf7**, Black came out on top. Black could have won with 29. ... **Bb5+**, but only after 30. **Nc4 Qc3+ 31. Ke2 Bxc4+ 32. Rd3 Kh8!!**. Presumably, both players missed that now ... **Ra8-b8-b2** is decisive. 29. ... **d5** Or 29. ... **Kxg6 30. Qg4+ Kf7 31. Rf5+ Bf6 32. e5. 30. Rxd5 Bxd5 31. exd5 Qc3+ 32. Ke4 Kxg6** when White has a number of wins, and simply has to avoid 33. **Rxd4?? Re8+** dropping the queen. (Tang – Zhao, Grand Rapids, 2023, Analysis)