

# TV'S ALICE LEE

## WEDNESDAY WORKOUT ■ JULY 26, 2023

BY JOHN HARTMANN

### PUZZLE 1.



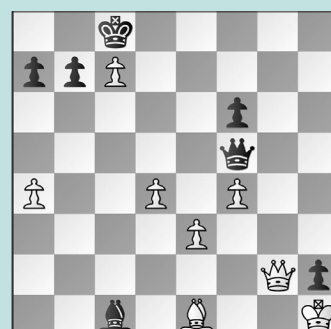
BLACK TO MOVE

### PUZZLE 2.



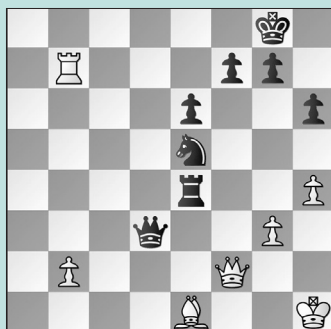
WHITE TO MOVE

### PUZZLE 3.



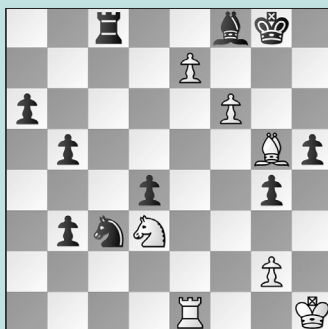
WHITE TO MOVE

### PUZZLE 4.



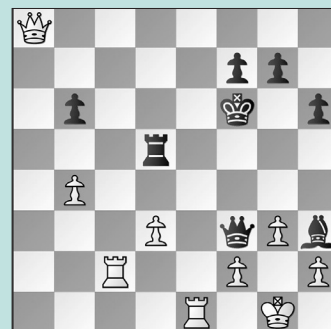
BLACK TO MOVE

### PUZZLE 5.



BLACK TO MOVE

### PUZZLE 6.



WHITE TO MOVE

## SOLUTIONS

It's been a great week for IM-elect Alice Lee! Not only did she win the 2023 U.S. Junior Girls' Championship with a score of 7½/9, finishing a full point and a half ahead of FM Ruiyang Yan in second place, she also made her second appearance on network television when she was on "GMA3: What You Need to Know" this morning! To celebrate both her victory and her growing media empire, we bring you six puzzles from Alice's games this week. Some are relatively easy, but others — particularly the sixth and final position — will require a bit more from even the most practiced tactician. Good luck! **PUZZLE 1.** Let's start simple. Of course you found the

double attack **44. ... Nd6** and Black picks up the rook when the queen moves. (Baasansuren – Lee, Saint Louis 2023) **PUZZLE 2. 24. Bxf6!** (removing the defender) **24. ... gxf6 25. Rd7!** with a double attack on the b7-bishop and the f7-pawn. (Lee – Bian, Lichess.org, 2020) **PUZZLE 3. 38. Qg8+ Kxc7 39. Qc4+ Kd7 40. Qxc1** Loose pieces drop off! White won on move 48 in Krush – Lee, American Cup, 2023. **PUZZLE 4.** Here's a nice finish from the 2022 U.S. Junior Girls: **39. ... Rxe1+ 39. ... Re2!** is also strong, i.e. **40. Qf1 Qe4+ 41. Kg1 Nf3+ 42. Qxf3 Qxf3 40. Qxe1 Qd5+** and the point is not to pick up the rook but to win the queen, i.e., **41. Kh2 (or 41. Kg1 Nf3+) 41. ... Nf3+.** (Tang – Lee, U.S. Jr Girls, 2023) **PUZZLE 5.** White won in the game after

**47. ... Bxe7 48. Rxe7 Nd5 49. Rg7+ Kh8 50. Ne5 Rc1+ 51. Bxc1.** Instead **47. ... Re8!**, preventing e7-e8=Q, is the only way to draw. Now after **48. exf8=Q+ Rxf8** Black's queen-side pawns make up for the piece. (Yan – Lee, U.S. Jr Girls, 2020) **PUZZLE 6.** The mate threat on g2 looks set to win the game. How does White survive? **35. Qc6+!** Pushing the king to an inopportune square. Not **35. Qxd5 Qxd5 36. f3** and Black wins, of course! **35. ... Kg5** Note that **35. ... Be6** removes the mate threat on g2. **36. Qxd5+ Qxd5 37. Re5+!** Magnet-ing the queen to e5! **37. ... Qxe5 38. f4+! Qxf4 39. gxf4+ Kxf4** and the extra Exchange should win, although it was eventually a draw in Lee – Abrahamyan, ch-USA w, 2022.)