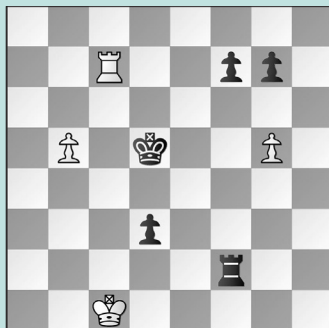


CARLSEN'S NINE LIVES

WEDNESDAY WORKOUT ■ JULY 19, 2023

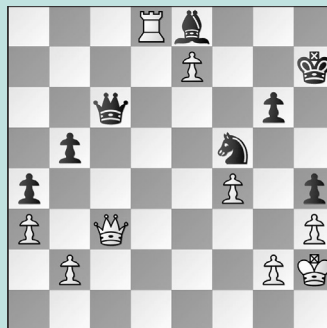
BY JJ LANG

PUZZLE 1.



BLACK TO MOVE

PUZZLE 2.



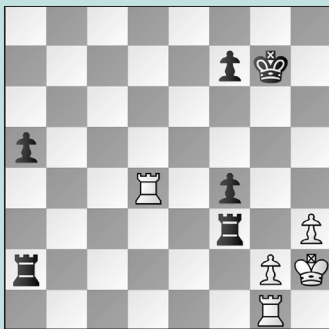
BLACK TO MOVE

PUZZLE 3.



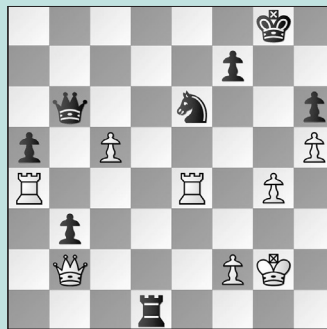
BLACK TO MOVE

PUZZLE 4.



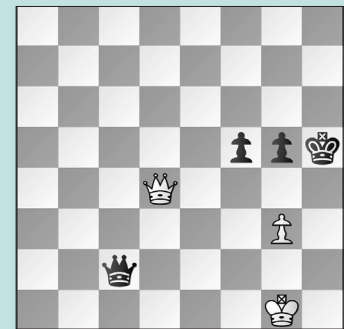
WHITE TO MOVE

PUZZLE 5.



BLACK TO MOVE

PUZZLE 6.



BLACK TO MOVE

SOLUTIONS

PUZZLE 1) 46. ... Rc2+! A straightforward simplification tactic! **47. Rxc2 dxc2 48. Kxc2** Instead, 48. b6 Kc6 49. Kxc2 Kxb6 does not change things. **48. ... Kc5 49. Kd3 Kxb5 50. Kd4 Kc6 51. Ke5 Kd7 52. Kd5 Ke7 53. Ke5 g6** and **White resigned.** (Gukesh – Carlsen, Zagreb (12), 2023) **PUZZLE 2) 57. ... Qxc3!** The right choice. In the game, **57. ... Nxe7??** was Black's grave error. After **58. Qe5!**, Black cannot save both pieces, and **resigned** after **58. ... Nf5 59. Rxe8. 58. bxc3 Ng7** White has no way to make progress, and the position is equal. (Carlsen – Saric, Zagreb (13), 2023, analysis) **PUZZLE 3) 28. ... Bd4!** Youzha! **29. Rac7** Now White saves mate. **29. ... Bxe3 30. fxe3 Rxe2** But

at what cost? **White resigned.** (Anand – Carlsen, Zagreb (14), 2023) **PUZZLE 4) 39. Ra1!** The only effective resource. White's choice in the game, **39. Kh1** was far too passive. After **39. ... Rff2 40. Rd3 a4 41. Rc3 Kf6 42. Rd3 a3 43. Rb3 f3 44. Rxf3+ Rxf3 45. gxf3 Rb2, White resigned. 39. ... Rxh3+ 40. Kxh3 Rxa1 41. Rxf4** Black's a-pawn is not enough to promise meaningful winning chances. (Lupulescu – Carlsen, Zagreb (18), 2023) **PUZZLE 5) 36. ... Qb5!** Black actually has an advantage now. After **36. ... Qc6??**, as played in the game, Black lost swiftly: **37. Qxb3 Rd5 38. Rac4 Nxc5 39. Qb8+ Kg7 40. Kh2 Rd2 41. Qe5+ Kh7 42. Qxc5** when **Black resigned. 37. Rac4** Not 37. Rec4??, which hangs one of the rooks after 37. ... Nxc5. **37. ... Ng5!**

38. Re3 a4! Capturing on c4 hung mate on e8, but the queen does not have take! (Carlsen – Duda, Zagreb (11), 2023, analysis) **PUZZLE 6) 95. ... Qe2!** There is no other way to make progress. A tempting idea is 95. ... Qe4, but White holds with 96. Qd1+ Qg4 97. Qd3. The immediate 95. ... g4 96. Qd5 Qe4 97. Qf7+ allows a perpetual check. **96. Qa4** White is essentially in *zugzwang*. The immediate check 96. Qh8+ Kg4 goes nowhere. Covering the pawn with 96. Qc3 comes at the expense of allowing Black's king to enter with 96. ... Kg4 97. Qd4+ Kf3 98. Qd5+ Kxg3 99. Qb3+ Kf4 100. Qb4+ Kf3 101. Qb7+ Qe4 102. Qb3+ Qe3+. **96. ... Qe1+ 97. Kh2 Qf2+ 98. Kh1 Qxg3** and **White resigned** six moves later. (Caruana – Carlsen, Zagreb (10), 2023)