

COORDINATION AND DEFENSE

Continuing our series on tactics in the **Evans Gambit**, this week's puzzles focus on the themes of **deflection**, **removing the guard**, and

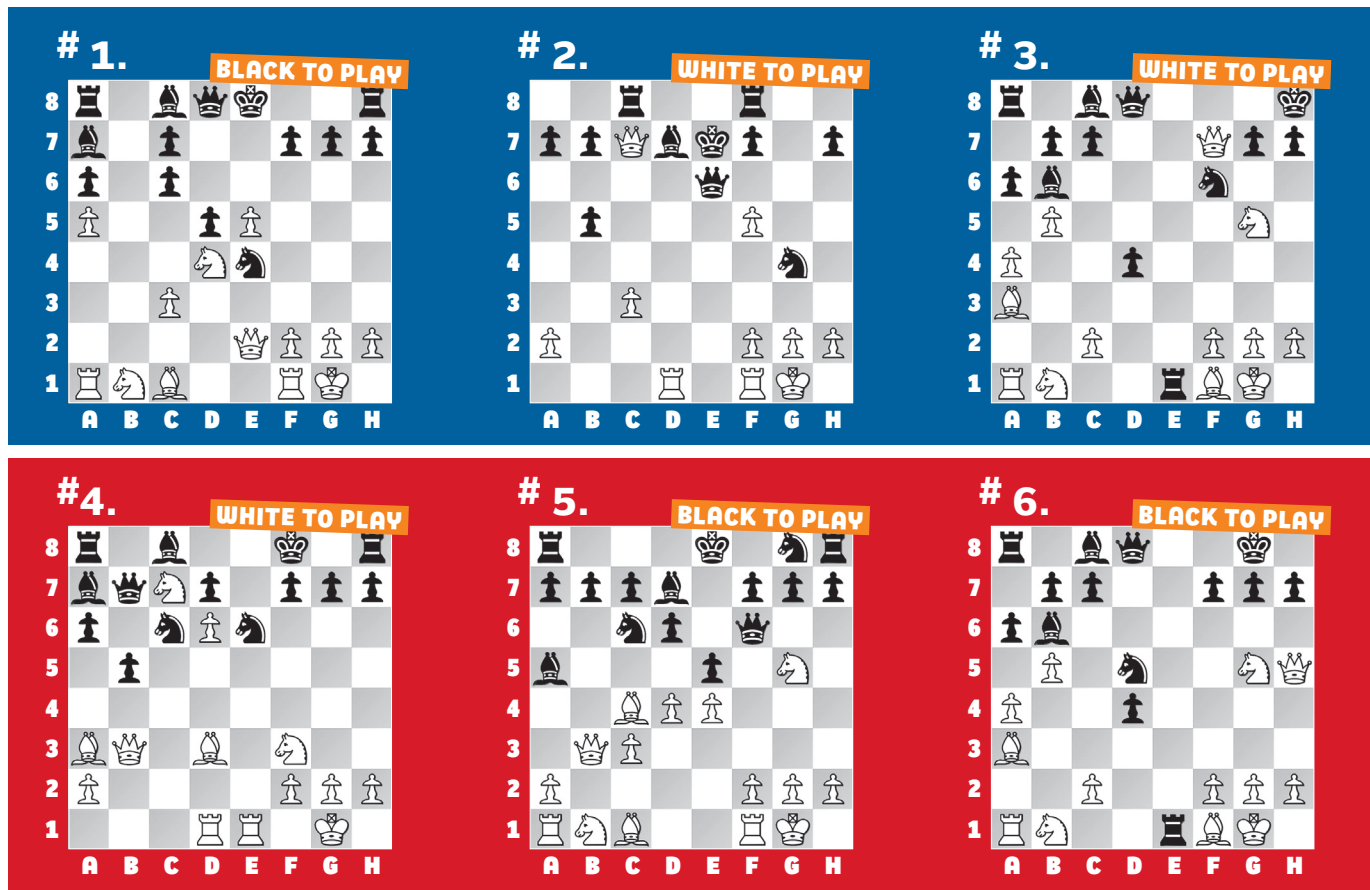
interference. Pieces need to work together in order to attack.

The same is true of defense, too! Puzzles five and six require you to find the best defense against White's attack. A master of attack must know what defensive resources their opponent could find.

In our **example**, White wants to use the e-file, but not when Black's king can hide on f8.

After **15. Bxg7 Rg8 16. Rfe1+ Kd8**, White is so close to playing Bg7xf6#.

Can you find Fischer's brilliant winning 17th move?



SOLUTIONS

1) 14. ... Nxc3! A nice removing of the defender with tempo. **15. Nxc3 Bxd4.** (Chigorin – Lasker, St Petersburg, 1895) **2) 22. Rxd7+!** Fischer shows why he is the master of the tempo. **22. ... Qxd7 23. f6+! Nxf6 24. Re1+** deflecting the king off its queen. (Fischer – Celle, Davis, 1964) **3) 18. Bf8! Ne8 19. Bb4!** White missed this nasty double-attack, using the interference of Black's knight to threaten mate

on f8. **19. ... Nd6** This might look like a game-saving resource, but White has **20. Bxe1 Nxf7 21. Nxf7+** regaining the queen! (Koehler – Jasnogrodsky, New York, 1895, analysis) **4) 21. Rxe6 fxe6 22. Nxe6+** This forces the pawn off d7. **22. ... dxe6 23. d7+** (Ward – Wortman, 1915) **5) 9. ... Nh6!** White's 9. Ng5 was not good, because it blocked the white bishop's path to h6. **10. f4** A critical moment. **10. ... exd4!** Not 10. ... exf4? 11. Nxf7! with the

idea that 11. ... Nxf7? 12. Rxf4! wins back the piece. **11. e5 Qe7! 12. e6 fxe6** and the attack died out. (Wolf – Gruenfeld, Vienna, 1920) **6) 16. ... h6!** Puzzle three began after Black's 16. ... Nf6??. **17. Qxf7+ Kh8** holds. **18. Bf8 Qxg5!** White's own bishop is in the way of the queen's path to the back rank. (Koehler – Jasnogrodsky, New York, 1895) **Bonus) 17. Qg3! Black resigned**, as **17. ... Qxg3 18. Bf6** is mate. (Fischer – Fine, New York, 1963)