

CADETS CALLED UP

WEDNESDAY WORKOUT ■ JUNE 28, 2023

BY JJ LANG

PUZZLE 1.



WHITE TO MOVE

PUZZLE 2.



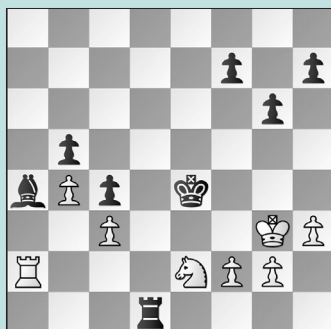
WHITE TO MOVE

PUZZLE 3.



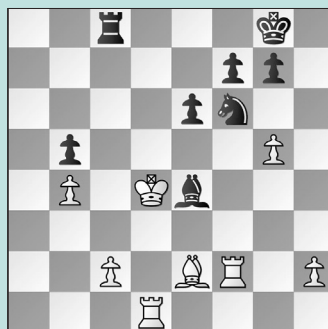
BLACK TO MOVE

PUZZLE 4.



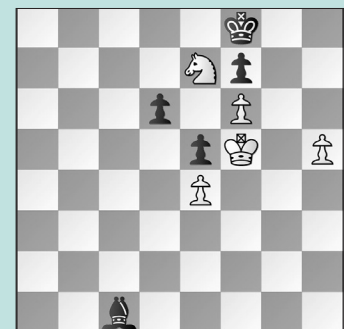
WHITE TO MOVE

PUZZLE 5.



BLACK TO MOVE

PUZZLE 6.



BLACK TO MOVE

SOLUTIONS

PUZZLE 1. 31. Qd7+ Rf7 Or 31. ... Kg8 32. Qh7 mate. 32. Rh7+! and Black resigned. (Hardaway – Li, Chicago, 2023)
PUZZLE 2. 26. b4! This forces a winning breakthrough. 26. ... Qd8 There were no good alternatives. 27. b5 Nb8 The alternative 27. ... Na5 28. c5 is similar. 28. c5 dxc5 29. Qc3+ and Black resigned on move 37. (Park – Li, Chicago, 2020)
PUZZLE 3. 24. ... Bxc3! In the game, 24. ... Kxg6?? was played. After 25. Bh5+ Kf6 26. Bb6! Qxc3+ (or 26. ... Qxb6 27. Qf4+ Ke6 28. Bg4+ Rf5 29. Qxf5 mate) 27. Qxc3+ e5, White is winning. 25. bxc3 Ke8 Black has dodged the attack. 26. Kb1 Rb8 If anything, Black can play for a win. (Chen – Li, Chicago, 2023, analysis)
PUZZLE 4. 42. Nf4!

White must guard the d3-square before asking Black's king to leave. In the game, 42. f3+ was played, but after 42. ... Kd3, White resigned. 42. ... g5 The most logical try. 43. f3+! Now this works, as Black must retreat to a square that is not touching the key d3-square. 43. ... Ke5 Not 43. ... Ke3??, which is immediately refuted by 44. Re2 mate. 44. Ne2 and White holds. (Vanapalli – Kunka, Chicago, 2023, analysis)
PUZZLE 5. 33. ... Bxc2!! This is a subtle point. With the bishop on e4, White's position is hopeless. In the game, 33. ... Rd8+? was played, but it lost after 34. Ke5 Nd5 35. Bxb5! Rb3 36. c4 when White won on move 57. 34. Rdf1 Alternatively, 34. Rc1 Rd8+ 35. Ke3 (not 35. Ke5?? Rd5+ 36. Kf4 Rf5+ which wins the

rook, e.g. after 37. Ke3 Ng4+) 35. ... Nd5+ 36. Kf3 Nxb4 36. Rb7 e5+ 37. Ke3 Nd5+ 38. Kd2 Be4 39. Rc1 Rd8 keeps Black in the game. (Chen – Adewumi, Chicago, 2023, analysis)
PUZZLE 6. 62. ... Ke8!! To find this move, Black has to understand White's plan of getting the king over to the queenside. In the game, 62. ... Bd2? was played. White eventually found the winning plan of playing Ne7-f5 and breaking through on the queenside with Kf5-g4-f3-e2-d3-c4, and Black resigned on move 78. 63. Kg4 Kd7 64. Kf3 Or 64. Nf5 Ke6 65. h6 Bxh6!! holding. 64. ... Ke6 65. Nd5 Bg5 and Black's pieces have created counterplay on the weak f6-pawn. (Zhao – Chen, Chicago, 2023, analysis)