

CHESS IS FOR THE CHILDREN

WEDNESDAY WORKOUT ■ JUNE 07, 2023

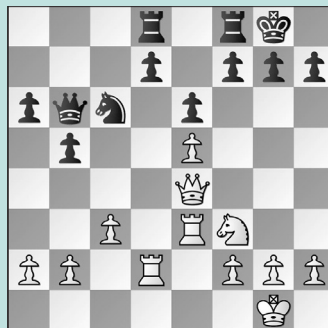
BY JJ LANG

PUZZLE 1.



WHITE TO MOVE

PUZZLE 2.



WHITE TO MOVE

PUZZLE 3.



WHITE TO MOVE

PUZZLE 4.



WHITE TO MOVE

PUZZLE 5.



WHITE TO MOVE

PUZZLE 6.



BLACK TO MOVE

SOLUTIONS

PUZZLE 1. 15. Bxf6! Yes, White wants to use the discovered attack on the queen. But pattern recognition is no substitute for precision in calculation. The immediate 15. Nxe6? allows 15. ... Qc6! when White has no Bc4-d5 tempo-gaining move here. After 16. Nf4, White has won a pawn, but nothing more. **15. ... Bxf6 16. Nxe6 Qxa4** Now the problem with 16. ... Qc6 is clear after 17. Bd5!. **17. Nxf8** White won the exchange and, soon after, the game. (Hari Krishna – Chigaev, *Chess.com*, 2023) **PUZZLE 2. 18. Ng5** Sometimes, the most straightforward threat is still the best move. **18. ... g6** The alternative 18. ... f5 19. exf6 would not help Black at all. **19. Nxf7!** There are

other options, as 19. Qh4 h5 20. Ne4 is still winning, as are many other options like the more brute-force 20. g4. **19. ... f5 20. exf6 and Black resigned.** (Iskusnyh – Mikaelyan, *Chess.com*, 2023) **PUZZLE 3. 21. Rg5+** The most forcing! **21. ... Kh8** Capturing with 21. ... hxg5 gets mated after 22. Qxg5+ Kh8 23. Qxf6+ Kg8 24. Qg5+ Kh8 25. Qh6+ Kg8 26. Qh7 mate. **22. Rh5!** “Take my rook, please!” **Black resigned** instead. (Rakhmanov – Makarian, *Chess.com*, 2023) **PUZZLE 4. 17. Nf6+! Kf8** Taking is not an option, as after 17. ... gxf6 18. gxf6+ Kf8 (even worse is 18. ... Kh8, as after 19. Rg7 Black gets mated next move), 19. fxe7+ wins the queen. **18. Qh7** This was the most precise finish. **18. ... Qd6 19. Rgd1!** No escape! **19. ... Qc7 20. g6!**

and **Black resigned.** (Kuzubov – Zakhartsov, *Chess.com*, 2023) **PUZZLE 5. 19. Qd3** A subtle move. **19. ... Kg8** No different is 19. ... Kh8, when White wins similarly with 20. Qe3 Kh7 21. Nxf6+ gxf6 22. Qe4+. **20. Qe3 Kh7** Now we see why the queen is better placed on the e3-square than she was on d2: **21. Nxf6+** and **Black resigned** rather than lose the rook after 22. Qe4+! (Giri – Van Foreest, *Chess.com*, 2023) **PUZZLE 6. 16. ... e5 17. Qg4** Instead, 17. Qf3 was no better: 17. ... Nd4 18. Qc3 Nxe2 mate. **17. ... Nd3+ 18. Kb1** The alternative 18. Bxd3 loses the queen; no better is 18. Kc2 Nd4+ 19. Kc3 Bxg4 when the queen falls again. **18. ... Nxb4 19. a3 Nd4+ 20. Qxg6+ hxg6 21. axb4 Nxe2** and **Black won.** (Khanin – Frolyanov, *Chess.com*, 2023)