

# PRO CHESS LEAGUE PLAYOFFS!

WEDNESDAY WORKOUT ■ MAY 17, 2023

BY JJ LANG

PUZZLE 1.



WHITE TO MOVE

PUZZLE 2.



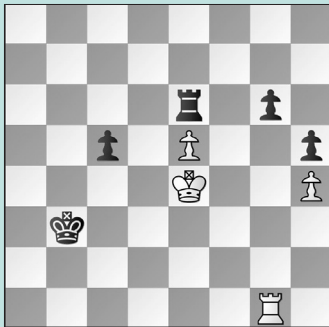
BLACK TO MOVE

PUZZLE 3.



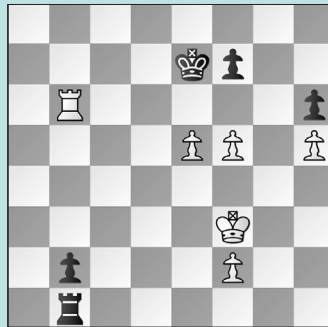
WHITE TO MOVE

PUZZLE 4.



WHITE TO MOVE

PUZZLE 5.



WHITE TO MOVE

PUZZLE 6.



BLACK TO MOVE

## SOLUTIONS

**PUZZLE 1.** White wins the exchange after **18. Nxe4 fxe4 19. Bh3! Bxb2 20. Bxe6 Qxe6 21. Qxb2+** and Black went on to hold a **draw**. (Lee – Nakamura, *Chess.com*, 2023) **PUZZLE 2.** **10. ... Bg4! 11. Qe1** Even worse was **11. f3 Nxf3+ 12. Kh1 Nxh2 13. Kxh2 Bxd1. 11. ... Nf3+** The most forcing of several options. **12. gxf3 Bxf3 13. h3 Ng4!! 14. Ne2** The point was **14. hxg4 Qh4. 14. ... Qh4 15. Ndf4 g5 16. d4 gxf4 17. Nxf4 Bxd4 18. Be3 Be5 19. Qa5 Qxh3!** and **White resigned**. (Pranesh – Xu, *Chess.com*, 2023) **PUZZLE 3.** **16. Be5! Qxe5** Black can't take, but they have no alternatives! **17. Bxh7+ Kxh7 18. Qxe5** and **White won**. (Xu – Sadhwani, *Chess.com*, 2023) **PUZZLE**

**4.** The only winning move was **75. Rb1+** Instead, White played **75. Kd5??** and headed towards a draw after **75. ... Re8 76. e6 c4** although **White won** later. **75. ... Kc2 76. Rb8** Rooks belong behind passed pawns. Now, after **76. ... c4 77. Kd5 Re7 78. e6** and White's king chases down Black's pawns after the rooks trade off. **78. ... c3** Trying to chase down the pawn from behind with **78. ... Ra7 79. Kd6 Ra1 80. e7 Rd1+ 81. Kc5** also loses. **79. Kd6 Ra7 80. e7 Rxe7 81. Kxe7 Kd2 82. Rc8 c2 83. Kf6** and **White wins**. (Vokhidov – Adhiban, *Chess.com*, 2023, analysis) **PUZZLE 5.** **52. f6+!** The only winning move. Instead, the game continued with **52. Kf4?? Kd7??** (Black could stop the plan with **52. ... f6!**) **53. f3 Kc7??** (**53. ... f6!**) **54. Rb3**

**Kd7 55. Rb4??** (a new wrinkle: **55. f6 Ke6 56. Rd3!!** and an unstoppable mating net) **55. ... Ke7??** (**55. ... f6!**) **56. Rb7+ Ke8 57. f6!** (or **57. Rb8+ Ke7 58. f6+**, as after **58. ... Ke6 59. Rd8!** forces mate) **57. ... Kd8 58. e6** and **Black resigned**. **52. ... Kd7 53. Kf4** Black is in *zugzwang*. **53. ... Kc7 54. Rb3 Kd7 55. Rb8 Kc7** Now the prettiest is **56. e6!!**. (Vaishali – Shri, *Chess.com*, 2023, analysis) **PUZZLE 6.** **27. ... Nxf2!** The pawn appeared to be protected, but it was an illusion. **28. Be3** White was lost after **28. Qxf2 Ng4 29. Qf1 Rxd2+**; No better was **28. Rf1 N2xe4 29. Ndx4 Rxe4+** simplifying into a won endgame for Black. **28. ... N2g4** White has nothing. **29. Bxd4 Qxd4+ 30. Kh1 Nf2+** and **White resigned**. (Nurmanova – Wei, *Chess.com*, 2023)