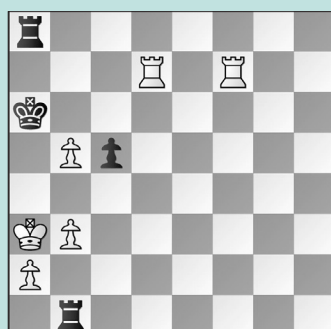


# CHECK THESE OUT!

## WEDNESDAY WORKOUT ■ MAY 10, 2023

BY JJ LANG

PUZZLE 1.



BLACK TO MOVE

PUZZLE 2.



BLACK TO MOVE

PUZZLE 3.



WHITE TO MOVE

PUZZLE 4.



WHITE TO MOVE

PUZZLE 5.



BLACK TO MOVE

PUZZLE 6.



WHITE TO MOVE

### SOLUTIONS

**PUZZLE 1.** 46. ... **Kb6+!** The threat of discovered check was obvious, but this finesse is important! Black would throw away the victory with 46. ... **Kxb5+?** 47. **Ra7 Rxa7+ 48. Rxa7**, which is likely what White expected. 47. **Ra7 Rxa7+ 48. Rxa7 Kxa7** and **White resigned** on move 52. Passed pawns can fight the rooks in some positions, but not with Black's king in position and White's misplaced. (Averjanov – Jaskolka, *Chess.com*, 2023) **PUZZLE 2.** 50. ... **Bh3+!** Black would have won with this move. Instead, White played 50. ... **Bxd5+??** 51. **Rf3+** and **Black resigned**. The difference between the two checks, of course, is that White had the "space" to interpose after the game move,

but not after the text move. 51. **Kh2 Bxf6** and Black is winning. (Stelmaszyk – Buchal, Walsrode, 2023, analysis) **PUZZLE 3.** Black's last move, ... **Be7-h4+**, looked to be the most forcing of several winning lines. However, after 32. **Kxh4 Qxf4+ 33. Bg4!!**, then **Black resigned!** (Tarhan – Korchmar, *Chess.com*, 2021) **PUZZLE 4.** White was winning with 31. **Qf7+!** But in the game got into hot water after 31. **Re3?? Qxf4+ 32. Rg3+ Qxg3+ 33. Kxg3 Bxe6! 34. Qe2? Bc4!** when Black was winning, but **White won** on move 60. 31. ... **Kh6** If Black plays 31. ... **Kh8** then 32. **Qf8+ Kh7 33. Qxe7+ Kg8 34. Qf7+ Kh8 35. Qxf6+** is even cleaner. 32. **Re3 Qxf4+ 33. Rg3** Unlike in the game, this block is now winning, as 33. ... **Qxg3+ 34. Kxg3** is insufficient because

Black does not have ... **Bd7xe6** at their disposal, so they can resign. (Paravyan – Gokerkan, *Chess.com*, 2023, analysis) **PUZZLE 5.** White's last move was 27. **exf6?**. Instead, 27. **Qxb2** was equal. What did White overlook? 27. ... **Qxe1! 28. Bxf7+ Or 28. Rxe1 Rxd2 29. Rxe8+ Bf8** when Black is still for choice. 28. ... **Kxf7 29. Qxd7+ Re7!! 30. Qd3** Black can win with anything here, but after 30. ... **Bxf6**, White resigned. (Dziuba – Zvjaginsev, Warsaw, 2021) **PUZZLE 6.** 32. **Ne7!!** This was the only winning move. The game continued 32. **Qxh6+?? Kg8 33. Ng3 Rxe4 34. Kg2 Re6+** and **White resigned**. Instead, 32. **Bxg7+** is only good for a draw after 32. ... **Bxg7 33. Ne7. 32. ... Rxe7 33. dxe7** and **White wins**. (Mayeregger – Riehle, *Chess.com*, 2020, analysis)