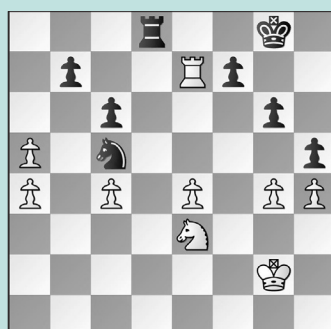


# BLAST FROM THE PAST

WEDNESDAY WORKOUT ■ APRIL 12, 2023

BY JOHN HARTMANN

PUZZLE 1.



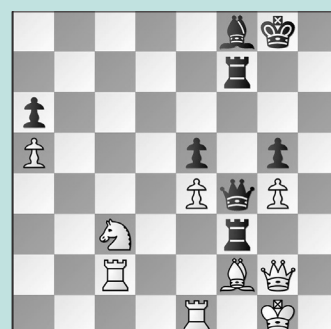
BLACK TO MOVE

PUZZLE 2.



BLACK TO MOVE

PUZZLE 3.



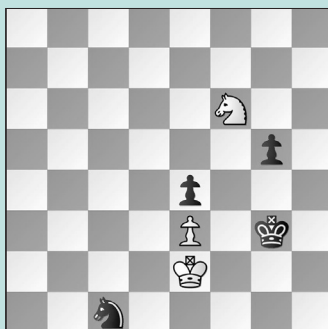
BLACK TO MOVE

PUZZLE 4.



WHITE TO MOVE

PUZZLE 5.



WHITE TO MOVE

PUZZLE 6.



WHITE TO MOVE

## SOLUTIONS

**PUZZLE 1.** 38. ... Nd7! The rook is trapped after ... .Kg8-f8!. In the game, 38. ... Kf8 39. Rc7 Rd3 40. Kf2 Nxe4+ 41. Ke2 Rb3 42. gxh5 Ng3+ 43. Kf2 Nxb5 led to a draw. (Simagin – Ciocaltea, Kislovodsk 1968 analysis) **PUZZLE 2.** 33. ... b4! 34. Re3 Of course not 34. cxb4 c3+ 35. Qxc3 Rxc3 36. Kxc3 Rxc1+ 34. ... R1h2 35. Ne2 Now Simagin is most efficient. 35. ... Rxe3 36. Qxe3 Bd3 37. Qg3 Rxe2+ 38. Kc1 e4 39. cxb4 c3 and White resigned. (Ignatiev – Simagin, Moscow, 1959) **PUZZLE 3.** Rapid action is required. 39. ... Rxf2! In the game, Black erred with 39. ... Bc5? 40. Nd1?! (White could end things after 40. Bxc5! Rg3 41. Nd5!) 40. ... Rg3 41. Bxc5 Qxg4 42. Ne3 Rxe2+ 43. Rxe2 Qxe4 44.

Rxe2+ Rg7 45. Rxe2+ Kxe2 46. Rf1 with an advantage. 40. Rxf2 Bc5! The key move: White cannot unravel his pieces. 41. Nd1 Qd2 42. Ref1 Qd3 (Mikenas – Simagin, Vilnius, 1949, analysis) **PUZZLE 4.** Simagin passed up the killer zwischenzug here. 20. d6! 20. Ba4+ Vatnikov could have played 20. ... Kf8! when much of White's attack is gone. 21. d6 Bxd6 22. Bxg5 Be7 23. Bh6+ Rg7! 24. Nd5 Bf5 and White's advantage is not excessive. Instead, Black played 20. ... b5? 21. Nxb5 when White was happy. 20. ... Bf8. 21. Ba4+! Bd7 22. Bxg5 and Black is lost. (Simagin – Vatnikov, Moscow, 1958, analysis) **PUZZLE 5.** 58. Kd1 The only move that holds. White lost after 58. Kd2 Kf3 59. Kxc1 (Or 59. Nh7 Nb3+! After 58. Kd1, this wouldn't be

check!) 59. ... g4 60. Nd5 (60. Kd2 g3 61. Nxe4 g2! [61. ... Kxe4 62. Ke2 is equal] 62. Ng5+ Kg3 63. Ne4+ Kh4) 60. ... g3 61. Nf4 g2 62. Nh3 Kg3 63. Ng1 Kh2 and White resigned. 58. ... Kf3 59. Nh7! g4 60. Ng5+ Kxe3 61. Kxc1 g3 62. Nh3 Ke2 63. Nf4+ Kf3 64. Nh3 Kg2 65. Nf4+ Kf1 66. Kd2 and White holds. (Simagin – Amirhanov, Moscow, 1955, analysis) **PUZZLE 6.** If you've read your Dvoretsky, you know this! If not, you're welcome. 34. Kh2! After 34. f3 g4 35. Rg1 Bxf3+ 36. Kf1 g3 37. Bc1 g2+ White resigned. 34. ... g4 Now White has to find 35. fxe3! The idea is to push e3-e4...35. ... g3+ 36. Kg1 f3 37. e4! f2+ 38. Kg2 fxe1=Q 39. Bxe1 and White has enough pawns for the Exchange. (Uusi – Simagin, Gorky, 1954)