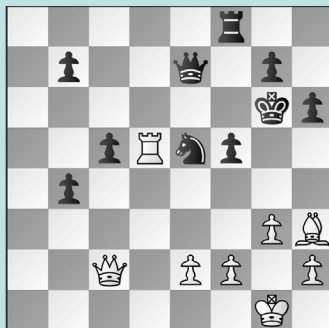


# WOMEN'S WCC CANDIDATES

## WEDNESDAY WORKOUT ■ APRIL 5, 2023

BY JJ LANG

### PUZZLE 1.



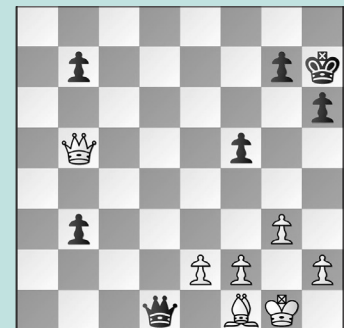
BLACK TO MOVE

### PUZZLE 2.



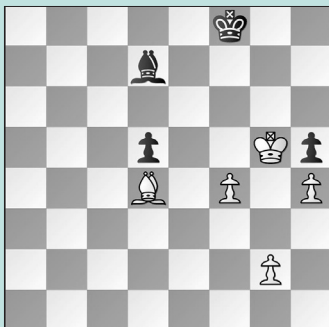
WHITE TO MOVE

### PUZZLE 3.



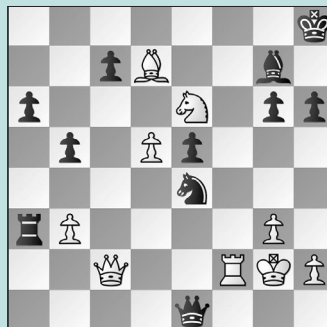
BLACK TO MOVE

### PUZZLE 4.



BLACK TO MOVE

### PUZZLE 5.



WHITE TO MOVE

### PUZZLE 6.



BLACK TO MOVE

## SOLUTIONS

**PUZZLE 1.** 30. ... c4! Black played 30. ... Qe6?? but 31. Qxc5 Nd7 did not hold things together: see puzzle two! 31. Rb5 h5! The key point. Now the knight can safely plant on the g4-square. Trades into endgames will be **winning for Black**. (Tan - Lei, FIDE Women's Candidates (1), 2023, analysis) **PUZZLE 2.** Black's last move, 31. ... Ne5-d7, seemed to handle the double-attack on two loose pieces. Or did it? 32. Rxd7 32. Qd4! was also powerful, perhaps even *moreso*. 32. ... Rf7 (32. ... Nb8 33. Rd6; 32. ... Nf6 33. Bxf5+) 33. Rd6 winning. 32. ... Qxd7 33. Qxf8 Qd1+ 34. Bf1 b3 And after one more accurate move, Black would be lost. 35. e4! 35. Qe8+ Kh7 36. Qb5 We have reached

**puzzle three.** 35. ... fxe4 36. Qe8+ Kf6 37. Qb5 and **White is winning**. (Tan - Lei, FIDE Women's Candidates (1), 2023, analysis) **PUZZLE 3.** 36. ... Qb1! Black's only way to hold the game! Black played 36. ... f4??, but opening up the b1-h7 diagonal with check is fatal. 37. e3 fxe3 38. Qd3+ and **Black resigned**; 36. ... Qc2?? 37. e3 b2 38. Bd3! also wins. 37. e3 b2 38. h4 Qc1 39. Qxf5+ Kh8 40. Qf8+ Kh7 41. Qf5 and **White is winning**. (Tan - Lei, FIDE Women's Candidates (1), 2023, analysis) **PUZZLE 4.** 71. ... Be8! Black lost with 71. ... Bg4?? This is the wrong diagonal. Now, White ousts Black's king from the key f7-square. 72. Kg6 Be7 73. f5 Bd3 74. g3 Kg8 75. Kxh5 Bxf5 76. g4 The point is that the connected passers will be decisive

with the bishop on the corresponding color of the rook's pawn. 72. Kf6 Bd7 73. Kg5 Be8 74. Kf6 Bd7 75. f5 White has no way to make progress. (Lei - Tan, FIDE Women's Candidates (2), 2023, analysis) **PUZZLE 5.** 44. Re2 Loose pieces drop off. 44. ... Qc3 No better were: 44. ... Qb4 45. Rxe4; 44. ... Qa5 45. Qxe4 (But not 45. Rxe4?? Ra2 with the pin.) 45. Qxe4 Rxb3 46. Qxg6! and **White wins**. (Lei - Tan, FIDE Women's Candidates (4), 2023) **PUZZLE 6.** 21. ... Nd8! An astute positional decision. White has no meaningful way to break open the center, so Black is justified. 22. Bg2 Nf7 23. Nf1 Ng5 24. Ne3 Nf3+ 25. Bxf3 gxf3 and now **Black wins** with the kingside push. (Tan - Lei, FIDE Women's Candidates (5), 2023)