

JENNIFER YU: SHE'S ALREADY WON TWO

WEDNESDAY WORKOUT ■ MARCH 29, 2023

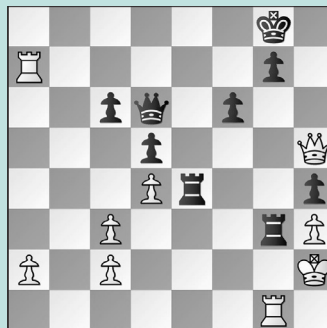
BY JJ LANG

PUZZLE 1.



WHITE TO MOVE

PUZZLE 2.



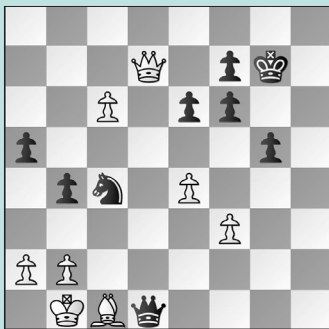
BLACK TO MOVE

PUZZLE 3.



BLACK TO MOVE

PUZZLE 4.



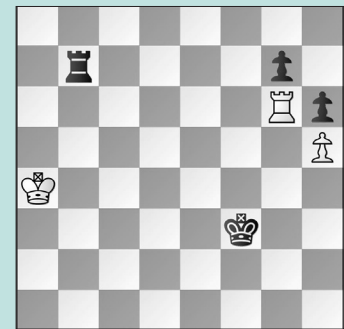
BLACK TO MOVE

PUZZLE 5.



BLACK TO MOVE

PUZZLE 6.



BLACK TO MOVE

SOLUTIONS

JENNIFER YU is the reigning **U.S. Women's champion**, having first won the title in 2019 at the **age of 17**. In that 2019 performance, Yu was almost unstoppable, scoring **nine wins** in an undefeated eleven games. She earned her second title by **defeating GM Irina Krush** in a dramatic Armageddon game this past fall. Yu currently attends **Harvard University**.

PUZZLE 1. 16. Rd1 Black just captured a poisoned pawn. The rook looks safe, but Yu proves otherwise. **16. ... Qb6 17. Be3 Qc7** No better is 17. ... Rxd1+ 18. Rxd1 Qc7 19. Nb5. **18. Nb5 Rxd1+ 19. Rxd1 Qe7 20. Bc5 Qe5 21. f4**

and **Black resigned**. (Yu - A. Jacobson, Charlotte CCCSA IM, 2018) **PUZZLE 2.** Can you find the fastest mate? **31. ... Rg2+** Yu played **31. ... Rxg1+**, still forcing resignation the next turn after **32. Kxg1 Qg3+**. **32. Kxg2 Qg3+** **33. Kf1 Re1** with **mate** (Kulon - Yu, FIDE World Cup (Women), 2021, analysis) **PUZZLE 3. 30. ... Bf2** Black targets the weak g3-pawn. **31. Qd2 Bxg3+** The only win, but a forced mate! **32. Kxg3 Qc7+** **33. Kg4 Be6+** and White resigned. (Zatonskih - Yu, USA-ch (Women), 2019) **PUZZLE 4. 33. ... Nd6** Black weaves a mating net. **34. b3** White cannot save things with 34. c7 Qd3+ 35. Ka1 Qc2 due to the well-placed knight! **34. ... Qd3+** **35. Kb2 a4!** **36. bxa4 Nc4+** **37. Ka1 Qc2** and **White resigns**. (Peycheva - Yu, Sitges Sunway,

2020) **PUZZLE 5. 26. ... Qe7!** Black would be crushing if she could play ... Rf5-g5 and win the g2-pawn. Therefore, Yu asks herself a logical question to find the most crushing move. **27. g3** Or 27. f3 Rg5 28. Qh3 Rg3 is also hopeless for White. **27. ... Rh5** Black switches targets now that the h1-square is exposed. **28. f3** Once more, with feeling! **28. ... Rg5** and **White resigned**. (Derakhshani - Yu, USA-ch (Women), 2018) **PUZZLE 6. 74. ... Re7** The only winning move, and Yu finds it! Wrong was 74. ... Rf7 75. Kb3! allowing White to take shelter. **75. Kb3 Re3+** **76. Kc4 Re4+** **77. Kd5 Rg4** **78. Ke6 Rg5!!** The point. Black's king gets to the g4-square and wins the h5-pawn. **White resigned** on move 84. (Zatonskih - Yu, USA-ch (Women), 2022)