

# CARISSA CRASHING THROUGH

WEDNESDAY WORKOUT ■ MARCH 22, 2023

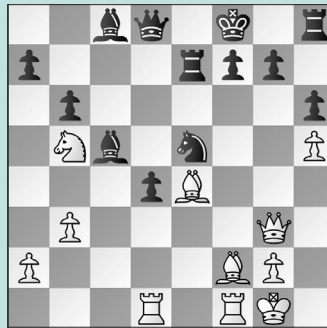
BY JJ LANG

PUZZLE 1.



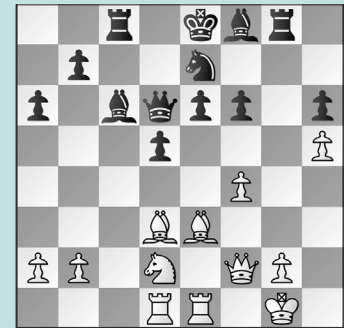
WHITE TO MOVE

PUZZLE 2.



WHITE TO MOVE

PUZZLE 3.



WHITE TO MOVE

PUZZLE 4.



BLACK TO MOVE

PUZZLE 5.



WHITE TO MOVE

PUZZLE 6.



BLACK TO MOVE

## SOLUTIONS

**IM CARISSA YIP** is the **2021 U.S. Women's Champion** and a three-time **U.S. Junior Girls' Champion**. At the age of 19, Yip is already the **second highest rated woman** in the country (behind GM Irina Krush). Hailing from Boston, Yip is currently an undergraduate student at **Stanford University** in California. Many of her positions here are from her 2021 U.S. Women's Championship victory in St. Louis, where she became the **first player to defeat four former U.S. Women's champions** over the course of a single championship. She is known for her uncompromising attacking style and a comfort in complicated positions requiring exact calculation.

**PUZZLE 1. 22. Rxc8+** Also effective is 22. Rd4. **22. ... Rxc8 23. Rd4** and **Black resigned**. (Yip - Krush, USA-ch (Women), 2021) **PUZZLE 2. 28. b4!** A smart deflection. 28. Bxd4 also wins after 28. ... Bxd4+ 29. Rxd4. **28. ... Bxb4** No better is 28. ... Bd6 when 29. Bxd4 pins the knight to the g7-square. **29. Rxd4** with another double attack. **Black resigned**. (Yip - Zatonskih, USA-ch (Women), 2021) **PUZZLE 3. 20. Bh7 Rg7 21. Ne4 Qc7 22. Nxf6+** In the game, **22. Bb6** was played, and White was still winning after **22. ... dxe4 23. Bxc7 Rxb7 24. Bd6** and **Black resigned** on move 32. **22. ... Kd8** Or 22. ... Kf7 23. f5! **23. Bb6** and **White is winning**. (Yip - Abrahamyan, USA-ch (Women), 2021, analysis) **PUZZLE 4. 32. ... Qxb5!** White played 32.

e4-e5, missing that while Black's pin failed, her mating net would not. **33. Rxc8 Qxd3 34. Rxa8 Qc2+! 35. Ka1 Bb4** and **White resigned**. (Buksa - Yip, FIDE World Cup (Women), 2021) **PUZZLE 5. 22. d5! Bxd5** Or 22. ... cxd5 23. Nd4 Bd7 24. c6 Bxc6 (24. ... Be6 25. Bxb5 wins) 25. Bxf5 winning. **23. Nc3 Qa6 24. Nxd5 cxd5 25. Bxf5 Rcd8 26. Bd4** with a **winning advantage**. (Yip - Eswaran, USA-ch (Women), 2021) **PUZZLE 6. 45. ... Re1!** White's last move, 45. Rf1-d1, failed to meet Black's threat. **46. cxd6** Not 46. Qa5 Qb2+ 47. Kd2 Bc3+ 48. Qxc3 Rxd1+ where Black wins. **46. ... Bf6** Other bishop moves were equivalent; 46. ... Bg7; 46. ... Be5. **47. Bxa6 Bg5+** and **White resigned**. (Mishra - Yip, Charlotte CCCSA Holiday GM, 2020)