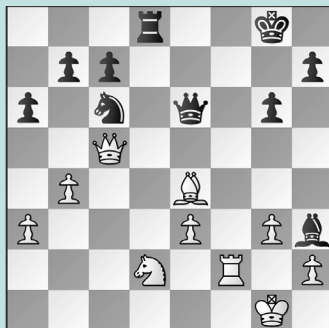


KRUSHING THE COMPETITION

WEDNESDAY WORKOUT ■ MARCH 15, 2023

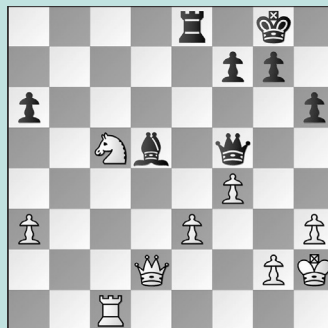
BY JJ LANG

PUZZLE 1.



BLACK TO MOVE

PUZZLE 2.



WHITE TO MOVE

PUZZLE 3.



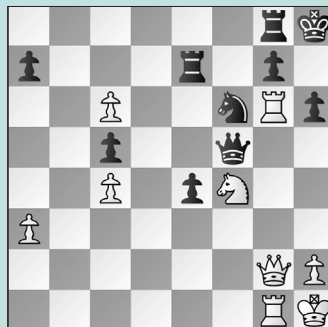
WHITE TO MOVE

PUZZLE 4.



WHITE TO MOVE

PUZZLE 5.



WHITE TO MOVE

PUZZLE 6.



WHITE TO MOVE

SOLUTIONS

GM IRINA KRUSH is an eight-time **U.S. Women's champion**. Krush first won the title in 1998, at the age of 15. She also won four consecutive titles from 2012 to 2015, and her most recent victory came in 2020. She earned her **grandmaster title** when she was 29, in 2013, earning two of her three norms that same year. This was five years after she became the first woman to earn a **Samford Fellowship** to study chess. Her next tournament is the **American Cup** in Saint Louis, where she looks to defend her 2022 title against the likes of IM Anna Zatonskih and FM Alice Lee.

PUZZLE 1. White played 27. Rf4-f2 and **resigned** before

Black could play her next move. **27. ... Qxe4** What's worse is 27. Rf4-f8+ followed by Be4-d5 was winning for White! (Kortschnoj – Krush, Gibraltar Masters, 2007) **PUZZLE 2. 40. Nxa6 Qe6** Black relied on this double attack, but after **41. Nc7** Black can escape the fork, but **41. ... Qxe3 42. Qxe3!** the Black bishop still hangs. **42. ... Rxe3 43. Nxd5** and **White won** after another 14 moves. (Krush – Bartholomew, USA team tournament playoff, 2011) **PUZZLE 3. 18. Ne5 Qb6** Or 18. ... Rd6 19. Bxh7+ Kxh7 20. Qh5+ Kg8 21. Qxf7+ Kh7 22. Nxc6 when White is winning. **19. Qh5 g6 20. Nxc6 fxc6 21. Bxc6** and **Black resigns** rather than face 21. ... hxg6 22. Qxc6+ Kf8 23. Bg7+ with mate to follow. (Krush – Hydasin, New York Marshall CC-

ch, 2019) **PUZZLE 4. 33. Bxe6 Qxe6 34. Qxh5 Qxa2 35. Qh3** Another option was 35. Bf2. **35. ... Bd5 36. Qf1!** and **Black resigned** on move 45. (Krush – Kosteniuk, Olympiad, 2008) **PUZZLE 5. 34. Nd5 Qe5** Alternatives: 34. ... Nxd5 35. Rxh6+ Qh7 36. Rxh7+ Kxh7 37. Qh3 mate; 34. ... Rf7 35. Nxf6 Rxf6 36. Rxc7 winning. **35. Nxf6** and **Black resigned**. (Krush – Hess, USA-ch, 2010) **PUZZLE 6. 20. e5!** The final breakthrough. The idea is to set free the e4-square for the bishop. **20. ... Bxe5** Or 20. ... f5 21. Bf6+ Rxf6 22. exf6 Bxf6 23. Qg6! winning. **21. Bf6+!!** Blocking the f-pawn. **21. ... Bxf6 22. Be4** and **Black resigned**, as there is no way to prevent the checkmate on h7. (Krush – Estrada Nieto, Oakham GM, 2001)