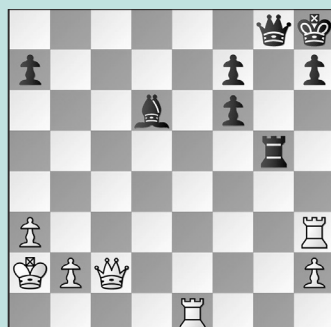


FIDE WGP: MUNICH

WEDNESDAY WORKOUT ■ FEBRUARY 22, 2023

BY JJ LANG

PUZZLE 1.



WHITE TO MOVE

PUZZLE 2.



WHITE TO MOVE

PUZZLE 3.



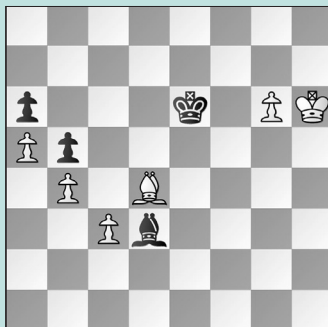
WHITE TO MOVE

PUZZLE 4.



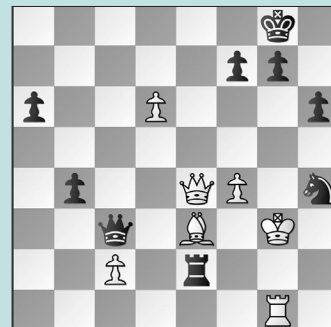
WHITE TO MOVE

PUZZLE 5.



WHITE TO MOVE

PUZZLE 6.



WHITE TO MOVE

SOLUTIONS

PUZZLE 1. Puzzle 1. **38. Re8** and **Black resigned**, as 38. ... Bf8 39. Rxf8! barely delayed the inevitable. Other moves win, but this classic deflection sacrifice is the prettiest punctuation mark to put on the game. (Tan – Zhu, WGP Munich, 2023) **PUZZLE 2.** **32. Rf6!** A nice deflection. **32. ... Qe8 33. Rxd6** And a nice discovery, after which **Black resigned**. It does not matter where Black placed her queen on the previous move, as it has nowhere to move that defends the weak g7-square. (Kosteniuk – Kashlinskaya, WGP Munich, 2023) **PUZZLE 3.** **33. Nxe4** Not best, but Black goes down swinging. 34. ... Ne8 35. Qxh5+ Kg8 36. Qxe5

and White wins. **35. Qxh5+ Kg8 36. Qf5** Double attack two. **36. ... Nd6 37. Qd7** Three's the charm. **37. ... Re8 38. Qxd6** and **White won** on move 59. (Paehtz – Dzagnidze, WGP Munich, 2023) **PUZZLE 4.** **33. Bd4** Without playing a single check or making a capture, White exploits the dark-squared weaknesses to win material by force. **33. ... 0-0 34. Bxd5 Rd6 35. Bc4** There's no way to stop the next threat. **35. ... Be6 36. Be5!** and **White won**. (Harika – Muzychuk, WGP Munich, 2023) **PUZZLE 5.** Analysis position after 56. ... Bd3. **56. ... Kd7** was played in the game, and **White won** after **57. Kg7 Bd3 58. Kf7**. The continuation here is more impressive. One rook's pawn might facilitate drawn endgames, but two rook's pawns

is another matter. **57. c4!** A nice point. **57. ... bxc4 57. ... Bxc4** loses now that White's king gets to h8. 58. g7 Kf7 59. Kh7 Bd3+ 60. Kh8 winning. **58. b5 axb5 59. a6 b4 60. a7 Be4 61. g7 Kf7 62. a8=Q Bxa8 63. Kh7 Be4+ 64. Kh8** and **White wins**. (Kosteniuk – Muzychuk, WGP Munich, 2023, analysis) **PUZZLE 6.** **35. Qe8+!** **35. Kxe4??** This blunder led to forced mate after **35. ... Rxe3 36. Qf5 Re2 37. Kg4 g6 38. Qd5 Rd2 39. Qe5 f5+** when **White resigned**. **35. ... Kh7 36. Kxe4** Only now. **36. ... Rxe3 37. Qxf7 Rh3+ 38. Kg4 Rh2 38. ... Qf3+?** actually loses after 39. Kf5 Rh5+ 40. Ke6 Qe3+ 41. Kd7 Qa7+ 42. Ke8 and Black is out of checks. **39. Qf5+** with a **perpetual check**. (Abdumalik – Dzagnidze, WGP Munich, 2023, analysis)