

# FROM OMAHA, WITH LOVE

WEDNESDAY WORKOUT ■ FEBRUARY 15, 2023

BY JOHN HARTMANN

PUZZLE 1.



WHITE TO MOVE

PUZZLE 2.



WHITE TO MOVE

PUZZLE 3.



WHITE TO MOVE

PUZZLE 4.



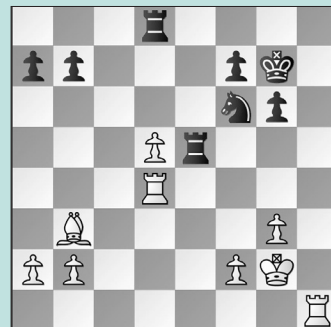
WHITE TO MOVE

PUZZLE 5.



WHITE TO MOVE

PUZZLE 6.



BLACK TO MOVE

## SOLUTIONS

**PUZZLE 1.** 10. h4! Black just played 9. ... g6 (better was 9. ... h6) and White takes advantage of the hook. Now 10. ... h5? is ill-advised as Black must **lose the Exchange**, or worse: 11. Bh6 Re8 12. Bxg6. (Hartmann – Lacroix, 13th Spence Swiss, 2023, analysis) **PUZZLE 2.** White should have played 13. hxg6! when Black has to choose between two bad recaptures. 13. g3?! was played. 13. ... hxg6 13. ... fxg6 loses to 14. Qb3+! Kh8 and now White draws away the defender with 15. Bxf4 Qxf4 16. Qxb7. 14. Qe4! White can get the queen to the h-file after 14. ... Bg5 15. Qf3! Kg7 16. Qh3! and **White is winning**. (Hartmann – Lacroix, 13th Spence Swiss,

2023, analysis) **PUZZLE 3.** 14. Qxc1 is strong. 14. Rxc1 f5 was played, with an edge for White; 14. hxg6!? is a strong in-between move, as 14. ... Bg5?? (14. ... fxg6 15. Qxc1 Qe7 16. Kf1 keeps the initiative) 15. g7 wins on the spot. 14. ... g5 Black will run into problems here, as well as after 14. ... Nd7 15. hxg6 fxg6 16. Bc4+! (16. Qh6?! Nb6) 16. ... Kh8 17. Qh6. 15. Qc2 h6 16. 0-0-0 **winning**. (Hartmann – Lacroix, 13th Spence Swiss, 2023, analysis) **PUZZLE 4.** 24. Rh7+! The real target is the f7-pawn. 24. c4, trying to open the diagonal, was played. 24. ... Kf8 25. Qd1! Now the queen heads to f3. 25. ... Ke7 26. R1h4! and **White is winning**. (Hartmann – Lacroix, 13th Spence Swiss, 2023, analysis) **PUZZLE**

**5.** 27. d6! 27. Qc3 was met with 27. ... Qe5!, fighting on; 27. Qc7 also works, with the idea 27. ... Nxd5? 28. Rh7+ winning. The text's idea is, again, to target the f7-square. 27. ... Rxd6 28. Qc7! Rd7 29. Qxd7! Nxd7 30. Rh7+ Kf6 31. Rxf7+ Ke5 32. Rxd7 with a **winning position**. (Hartmann – Lacroix, 13th Spence Swiss, 2023, analysis) **PUZZLE 6.** 29. ... Ne8! Rerouting the knight to blockade on d6. 29. ... Nxd5? 30. Rhd1 wins; 29. ... Rd6 30. Rhd1, with an advantage, was played. 30. Rc1 Nd6 The engine says I can give the Exchange with 31. Rc7!? Nb5 32. Rdc4 Nxc7 33. Rxc7 Re2 34. Rxb7 Rxb2 35. Rxa7 with an **unclear position**. (Hartmann – Lacroix, 13th Spence Swiss, 2023, analysis)