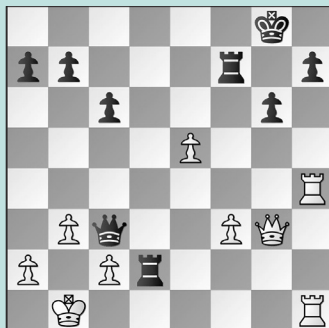


# A THOUSAND GMS IN MISSOURI

WEDNESDAY WORKOUT ■ FEBRUARY 08, 2023

BY JJ LANG

PUZZLE 1.



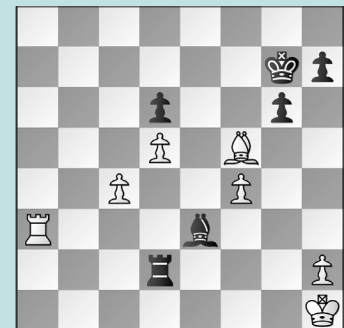
WHITE TO MOVE

PUZZLE 2.



WHITE TO MOVE

PUZZLE 3.



BLACK TO MOVE

PUZZLE 4.



WHITE TO MOVE

PUZZLE 5.



WHITE TO MOVE

PUZZLE 6.



BLACK TO MOVE

## SOLUTIONS

**PUZZLE 1. 35. Qxg6+ Kf8** Capturing with 35. ... hxg6 loses instantly after 36. Rh8+ Kg7 37. R1h7 mate. **36. Rxh7 Rxh7 37. Qxh7 Qxf3 38. Qh8+** and **Black resigns.** (Proleiko – Denby, 1000GM St. Louis IM, 2023) **PUZZLE 2. 24. Nxe6** White is not afraid of complications! **24. ... Rf6** Black does not have time for 24. ... Re8 due to 25. Bxf5. **25. Nd4 Nxf2** Black has too many loose pieces to play 25. ... Bxf2, due to 26. Rxg4 fxg4 27. Nxc6 winning. **26. Bxf5 Ne4** Another key moment. **27. Nxc6 Rxf5 28. Rg4** and **Black resigned.** (Tsolakidou – Eckert, 1000GM St. Louis IM, 2023) **PUZZLE 3. 36. ... Rd1+** The bishop is not immune! Black should also win after 36. ... Bxf4 37. Be6 Rxb2+ 38. Kg1 Kf6. **37.**

**Kg2 Bc5** Black could invert moves with 37. ... Rg1+ 38. Kh3 Bc5. **38. Rg3 Rg1+** The point! **39. Kf3 Rxb3+** and **White resigns.** (Bacus – Lee, 1000GM St. Louis IM, 2023) **PUZZLE 4. 55. Bh6!** Suddenly, White has a mating net! **55. ... Nc3+ 56. Ke6 Re2+ 57. Ne3 Bg3 58. Rg7+** and **Black resigns**, rather than face 59. Kf7 and 60. Rg8 mate. (Lee – Petenyi, 1000GM St. Louis, 2023) **PUZZLE 5. 31. Bxg4** White elects to trade into ‘good knight versus bad bishop’. **31. ... Bxg4 32. Rag1 Bf5 33. Rg5!** A nice finesse: the threat of Ne5-f7+ allows for time to play f2-f4. **33. ... Ke7 34. f4** and Black had no choice but to allow White to trade rooks and, eventually, penetrate the queenside **and win** on move 44. (Raja – Chambers, 1000GM St. Louis GM,

2023) **PUZZLE 6. 23. ... Nxd5!** An important improvement over the game continuation **23. ... Rxd5?? 24. Nc3 Re5 25. Nxe4 Rxe4 26. Qf3 Bb8 27. Nh5 Bxh2+ 28. Kxh2 Rh4+ 29. Kg1 Rxb5 30. Rc4!** and **White won** on move 46. **24. Nc5** Attempting to trade queens with 24. Qh5?? runs into 24. ... Nf4! 25. Qxg6 Ne2+ 26. Kh1 hxg6 where the threat of ... Ne4-xf2+ wins. **24. ... Bxc5 25. Rxc5** The greedy 25. bxc5? is punished by 25. ... Nf4! 26. Qf3 Ng5! 27. Qxb7 Rb8! when the queen is forced off g2-square, allowing for ... Ng5-h3+ and ... Qg6-xg2 mate. **25. ... Nxc5 26. bxc5 Nf6 27. Bxf6 Qxf6 28. Nh5 Qf5** and Black is a healthy exchange ahead. (Kavutskiy – Krishnan, 1000GM St. Louis GM, 2023, analysis)